

NWT Land Cover Classification

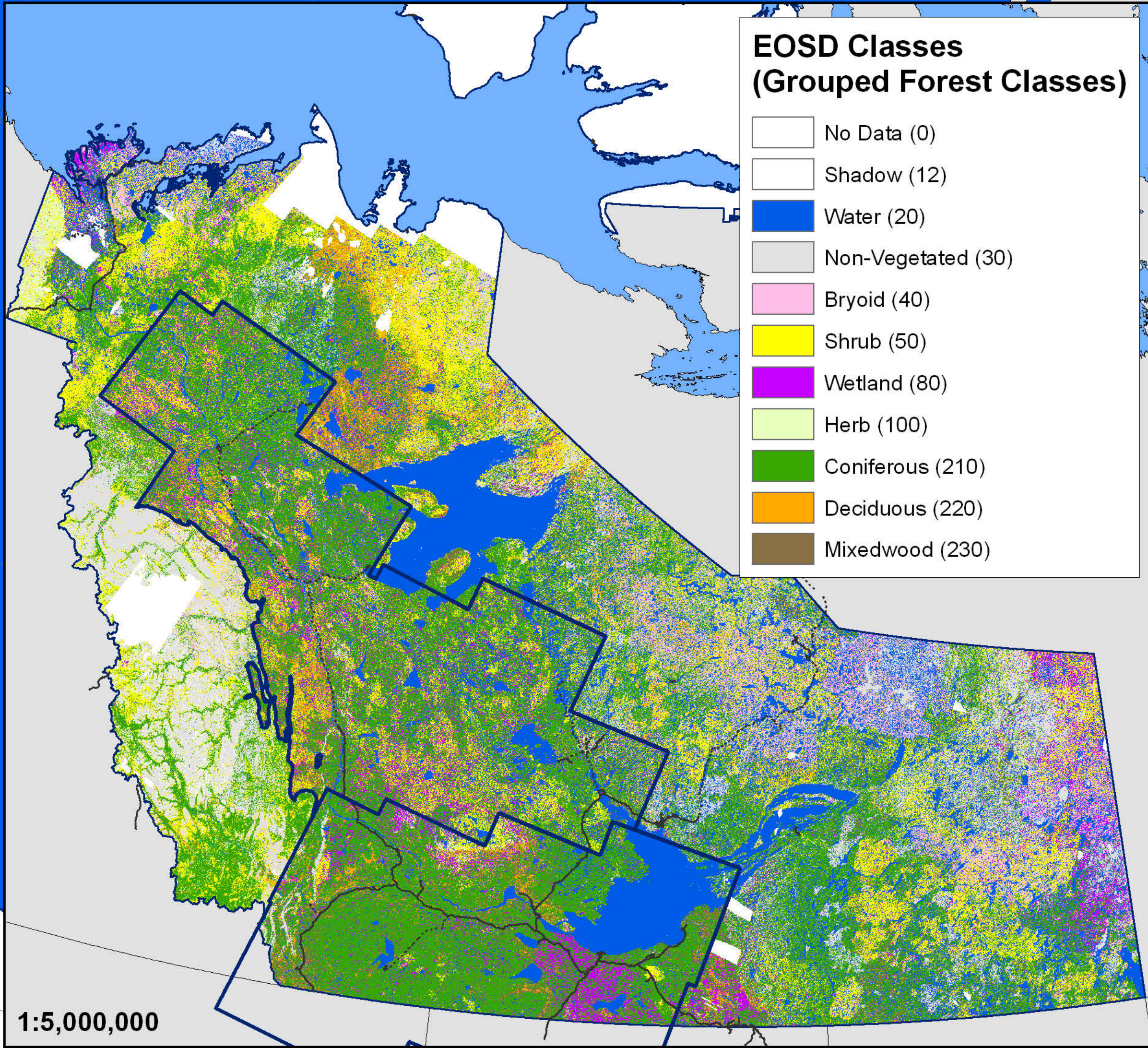
NWT Including Arctic Islands = 135Mha; land only = 114Mha
NWT Mainland: land/water = 114Mha; land only = 94Mha
NWT Mainland Below Treeline = 97Mha; land only = 80Mha

WHAT IS TREELINE?

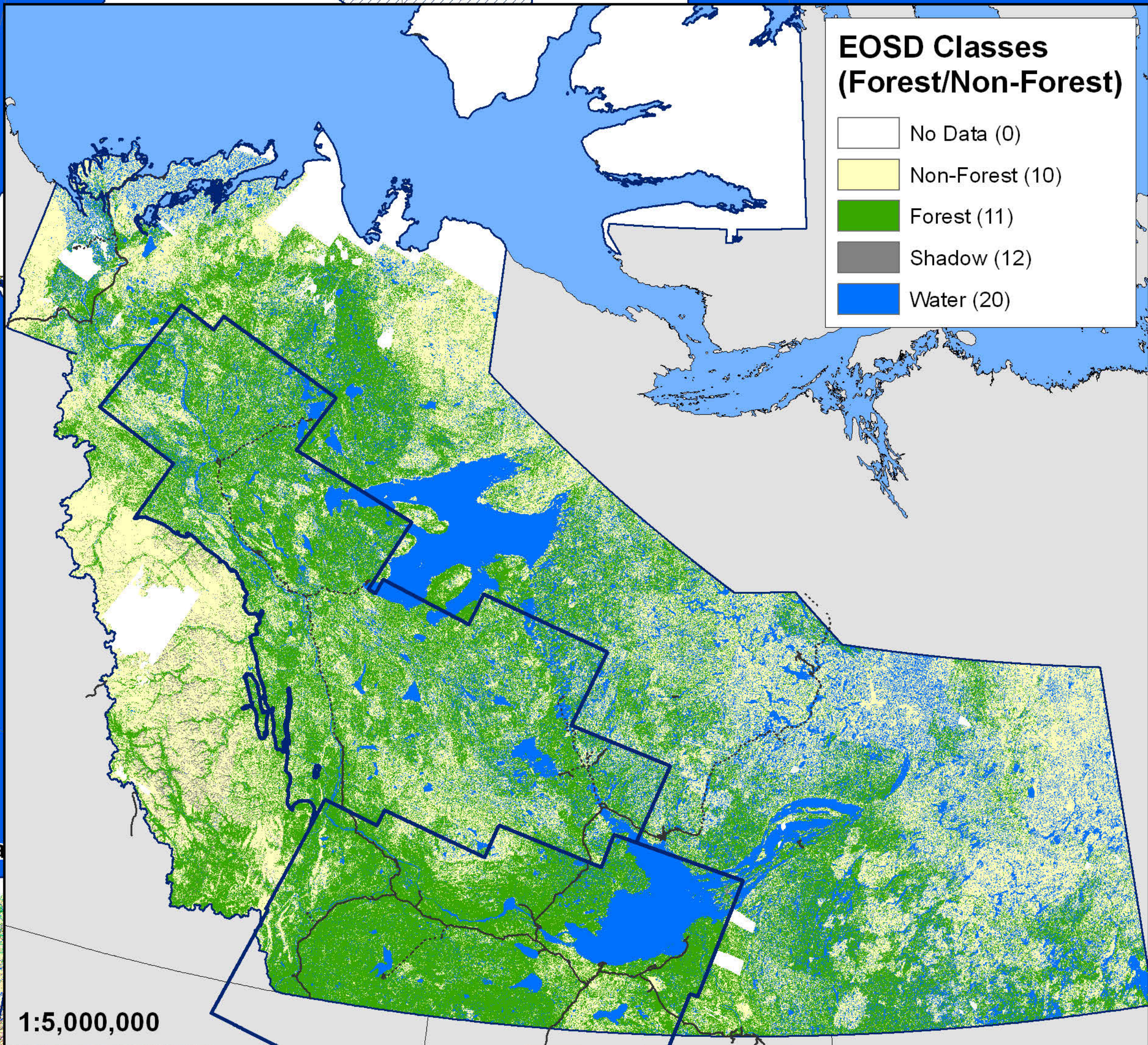
The limit beyond which trees cannot grow, often determined by altitude in mountainous areas or high latitude in the subarctic. Permafrost in the soil can prevent trees from growing their roots deep enough for the necessary structural support and cold temperatures can result in internal freezing of the trees, killing them. The treeline is not a distinct line because unique micro-sites, such as gullies and south facing slopes, offer conditions on which trees can establish and grow beyond the normal northern limit.

WHAT IS FOREST?

Forests are complex ecosystems comprised of many land cover types including trees, shrubs and wetlands. Forested land cover is defined as having > 10% tree crown closure.



E OSD Land Cover Classes	
E OSD Updates (c.2007/2010)	
No Data (0)	
Cloud (11)	
Shadow (12)	
Water (20)	
Snow/Ice (31)	
Rock/Rubble (32)	
Exposed Land (33,34)	
Bryoids (40)	
Shrub - Tall (51)	
Shrub - Low (52)	
Wetland - Treed (81)	
Wetland - Shrub (82)	
Wetland - Herb (83)	
Herb (100)	
Coniferous - Dense (211)	
Coniferous - Open (212)	
Coniferous - Sparse (213)	
Broadleaf - Dense (221)	
Broadleaf - Open (222)	
Broadleaf - Sparse (223)	
Mixedwood - Dense (231)	
Mixedwood - Open (232)	
Mixedwood - Sparse (233)	



E OSD Code Description	Area (Mha)	% Total Area
		% of 110.4 Mha
Cloud	0.0	0.0
Shadow	1.8	1.6
Water	22.2	20.1
Snow/Ice	0.7	0.7
Rock/Rubble	2.8	2.5
Exposed/Barren Land	7.0	6.4
Bryoids	4.7	4.2
Shrub Tall	1.8	1.6
Shrub Low	16.2	14.7
Wetland - Treed	5.4	4.9
Wetland - Shrub	4.9	4.4
Wetland - Herb	2.8	2.5
Herbs	1.4	1.3
Coniferous - Dense	4.6	4.1
Coniferous - Open	16.5	14.9
Coniferous - Sparse	10.6	9.6
Broadleaf - Dense	1.6	1.5
Broadleaf - Open	1.7	1.5
Broadleaf - Sparse	0.9	0.8
Mixedwood - Dense	1.4	1.3
Mixedwood - Open	1.3	1.2
Mixedwood - Sparse	0.2	0.1
	110.4	
Summary Statistics	Area (Mha)	* These #'s represent land cover types on NWT mainland
Water	22.17	
Non-Vegetated Land	10.51	
Vegetated Non-Forested	31.72	
Vegetated Forested	44.14	

