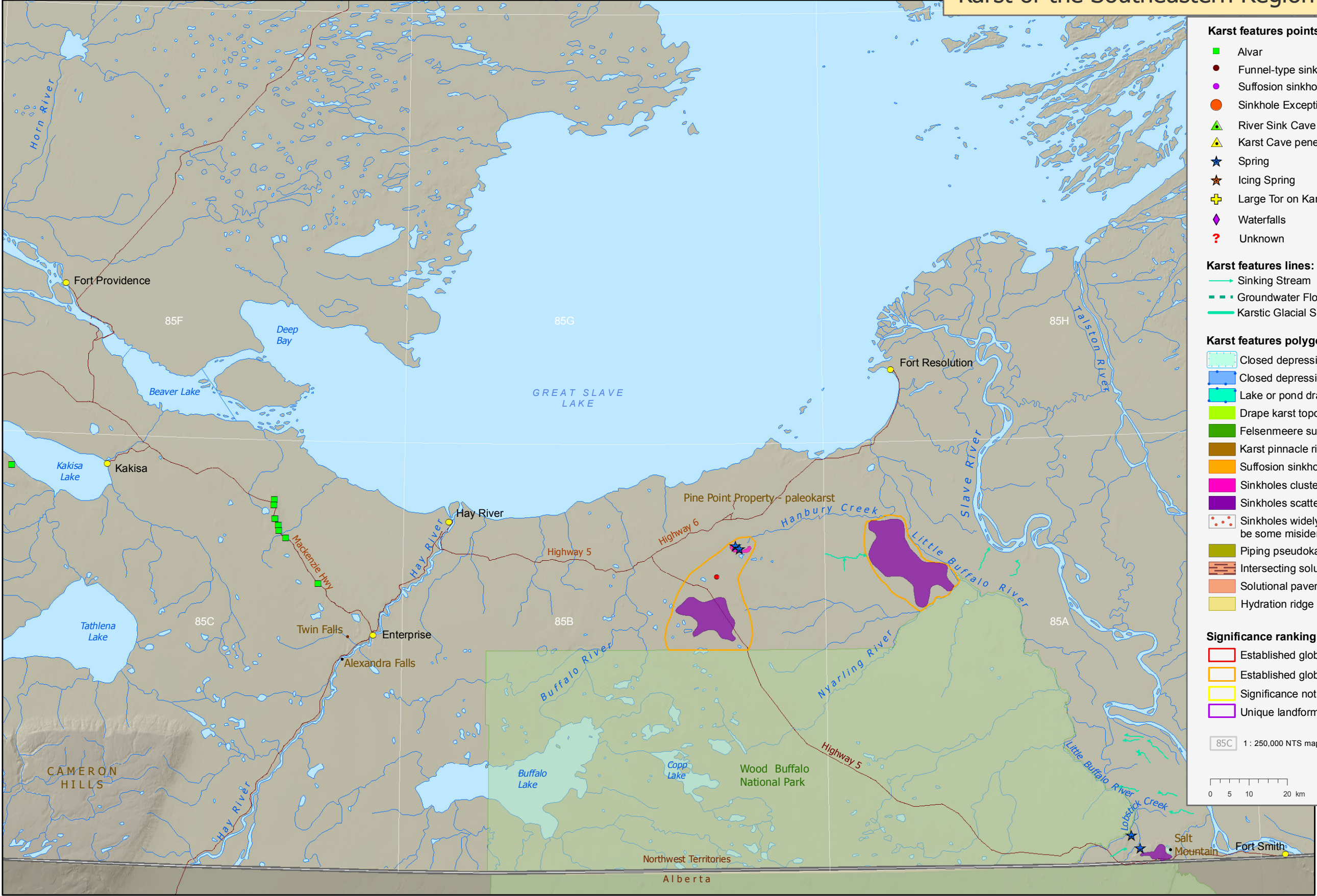


Karst of the Southeastern Region of the NWT



Karst features points:

- Alvar
- Funnel-type sinkhole
- Suffosion sinkhole
- Sinkhole Exceptional
- River Sink Cave
- Karst Cave penetrable >= 10m
- Spring
- Icing Spring
- Large Tor on Karst Rocks
- Waterfalls
- Unknown

Karst features lines:

- Sinking Stream
- Groundwater Flow Connection
- Karstic Glacial Spillway

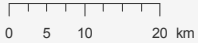
Karst features polygons:

- Closed depression draining underground
- Closed depression sinking stream
- Lake or pond draining underground
- Drape karst topography
- Felsenmeere surfaces
- Karst pinnacle ridge
- Suffosion sinkholes
- Sinkholes clustered
- Sinkholes scattered
- Sinkholes widely scattered; may be some misidentification
- Piping pseudokarst
- Intersecting solutional corridors
- Solutional pavement
- Hydration ridge - karstic; no detail

Significance ranking of karst terrains:

- Established global - very significant
- Established global - Significant
- Significance not yet well established
- Unique landform

85C 1 : 250,000 NTS mapsheet grid and number



May 11, 2012