

# Community Wildfire Protection Plan

Délıne



If you would like this information in another official language, call us.

English

---

Si vous voulez ces informations dans une autre langue officielle, contactez-nous.

French

---

Kīspin ki nitawih̄tīn ē nīhīyawih̄k ōma ācimōwin, tipwāsīnān.

Cree

---

Tłıchq̄ yatı k'èè. Dı wegodi newq̄ dè, gots'ō gonede.

Tłıchq̄

---

ʔerih̄t'ís Dēne Sųfīné yatı t'a huts'elkēr xa beyáyatı theʔą ʔat'e, nuwe ts'ēn yóftı.

Chipewyan

---

Edı gondı dehgáh got'ıe zhatıé k'éé edat'éh enahddhę nıde naxets'é edahıı.

South Slavey

---

K'áhshó got'ıne xədə k'é hederı ʔedıht'ıé yerııwę nıde dúle.

North Slavey

---

Jii gwandak izhii ginjik vat'atr'ıjāhch'uu zhit yınohthan jı', diıts'āt ginohkhıı.

Gwich'in

---

Uvanittuaq ilitchurisukupku Inuvialuktun, ququaqłuta.

Inuvialuktun

---

Ċ'đđ ɳɳ<sup>sb</sup>đ<sup>c</sup> ʌʀLJđʀ<sup>c</sup> Δđ<sup>b</sup>ɳđ<sup>c</sup> ʀ<sup>sb</sup>ʀLɳɳ<sup>b</sup>, đ<sup>c</sup>đ<sup>c</sup>đ<sup>c</sup> đ<sup>c</sup> đ<sup>c</sup>đ<sup>c</sup>đ<sup>c</sup>đ<sup>c</sup>đ<sup>c</sup>.

Inuktitut

---

Hapkua titiqqat pijumagupkit Inuinnaqtun, uvaptinnut hivajarlutit.

Inuinnaqtun

---

Indigenous Languages:

French:

867-767-9348

866-561-1664 Toll Free

## Contents

1.	Introduction .....	4
2.	Planning Area and Stakeholders .....	5
3.	Hazard & Risk Assessment .....	6
3.1	Wildfire Ignition Potential .....	6
3.2	Wildfire Behaviour Potential .....	8
3.2.1	Forest Fuel Types .....	9
3.3	FireSmart Hazard Assessments .....	9
4.	Vegetation Management Options .....	11
4.1	Existing Vegetation Management .....	11
4.2	Proposed Vegetation Management .....	12
4.2.1	Zone 1a (0-1.5 metres).....	12
4.2.2	Zone 1 (1.5-10 metres) .....	12
4.2.3	Zone 2-3 (10-30 metres and 30-100 metres).....	13
4.2.4	Fuel Breaks .....	14
4.3	Vegetation Management Maintenance .....	14
5.	Development Options.....	16
5.1	Structural Options .....	16
5.2	Infrastructure Options.....	17
5.2.1	Access.....	17
5.2.2	Water Supply.....	17
5.2.3	Franchised Utilities.....	17
6.	Public Education Options .....	18
7.	Inter-Agency Cooperation and Cross-Training Options .....	20
8.	Emergency Planning Options .....	21
9.	Recommendations Summary.....	22

## 1. Introduction

In 2012, a Community Wildfire Protection Plan (CWPP) was developed for the community of Délı̄ne to address the hazard and the risk to the community from wildfire. That CWPP was developed to provide practical and operational wildland /urban interface (WUI) risk mitigation strategies to reduce the threat from wildfire to the community.

The original CWPP was developed by Montane Forest Management Ltd in cooperation with the Government of the Northwest Territories (GNWT) and Délı̄ne.

In 2018 the GNWT, Environment and Natural Resources (ENR) updated the Délı̄ne CWPP by using the most recent information, science and expertise available. This included using standardized FireSmart assessment protocols and mitigative measures were developed based on the 7 disciplines of FireSmart.

1. Vegetation Management
2. Development
3. Legislation
4. Public Education and Engagement
5. Inter-Agency Cooperation
6. Cross Training
7. Emergency Planning

The update included:

- The FireSmart mitigation efforts completed around the community
- The change in hazard around the community.
- New recommendations or modification to existing recommendations

Délı̄ne, in cooperation with ENR, implemented some of the original recommendations but there is still work to do.

The update includes recommendations to assist in setting priorities to reduce the threat from wildfire. It is important to note that while implementing these recommendations will reduce the threat from wildfire to structures, it will never completely remove the threat.

This plan should be reviewed regularly to ensure that it remains a priority to the community and its residents.

## 2. Planning Area and Stakeholders

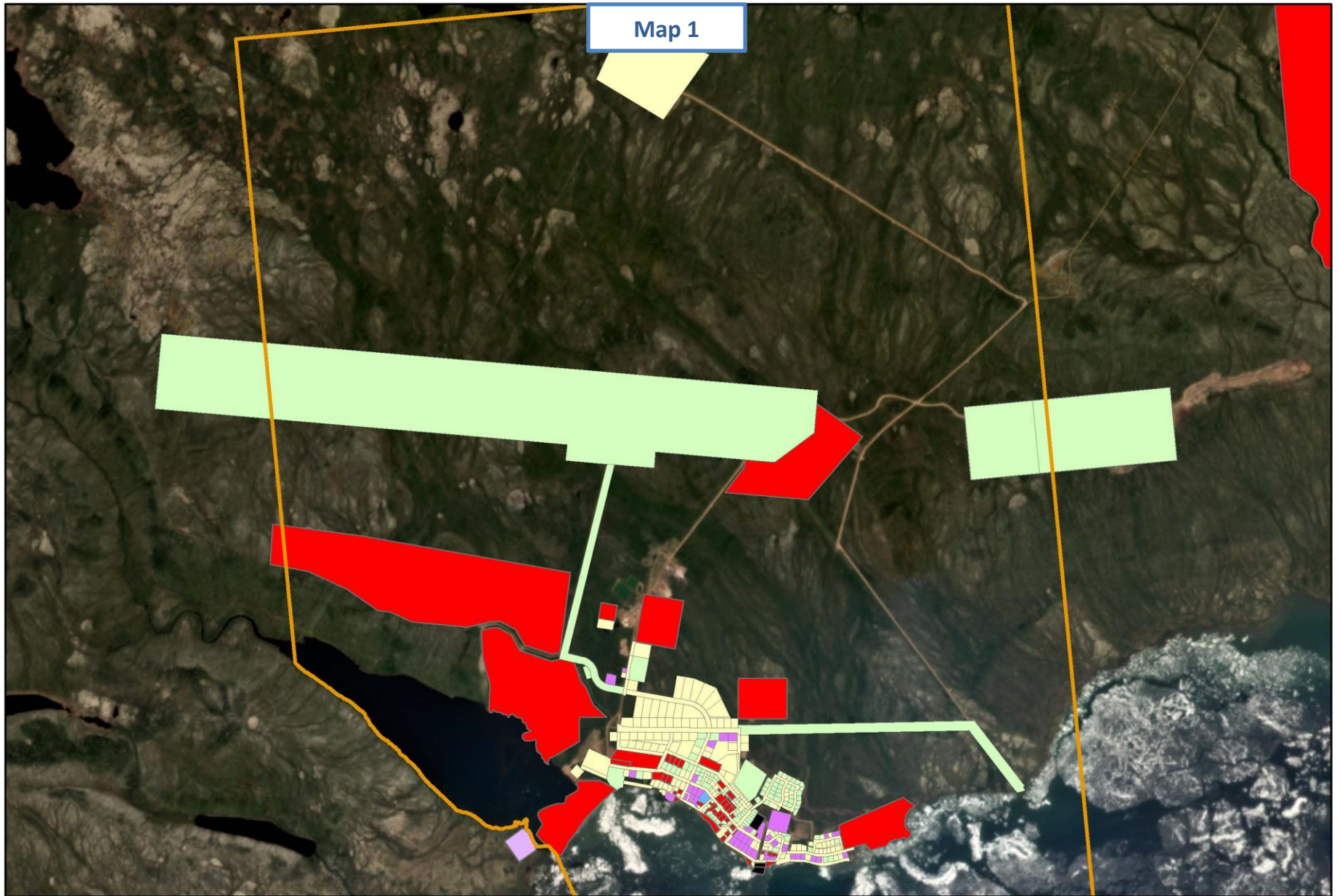
The planning area includes all lands within Délı̄nę and a two-kilometre buffer surrounding the community (Map 1).

Stakeholders involved with in the planning process included:

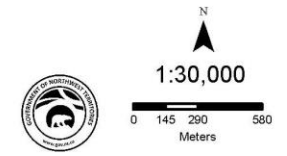
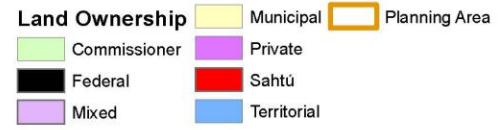
- Government of the Northwest Territories
- Délı̄nę Got'ine Government

Land status authority is represented by the following (Map 1):

- Commissioner
- Federal
- Municipal
- Private
- Sahtu



# Deline Land Status Authority



### 3. Hazard & Risk Assessment

In the original 2012 CWPP a hazard and risk assessment was undertaken to determine the potential impact wildfire could have on the community. This was based on an analysis of the historical wildfire ignition sources, fire incidence and the wildland fire potential of the forest surrounding the community.

#### 3.1 Wildfire Ignition Potential

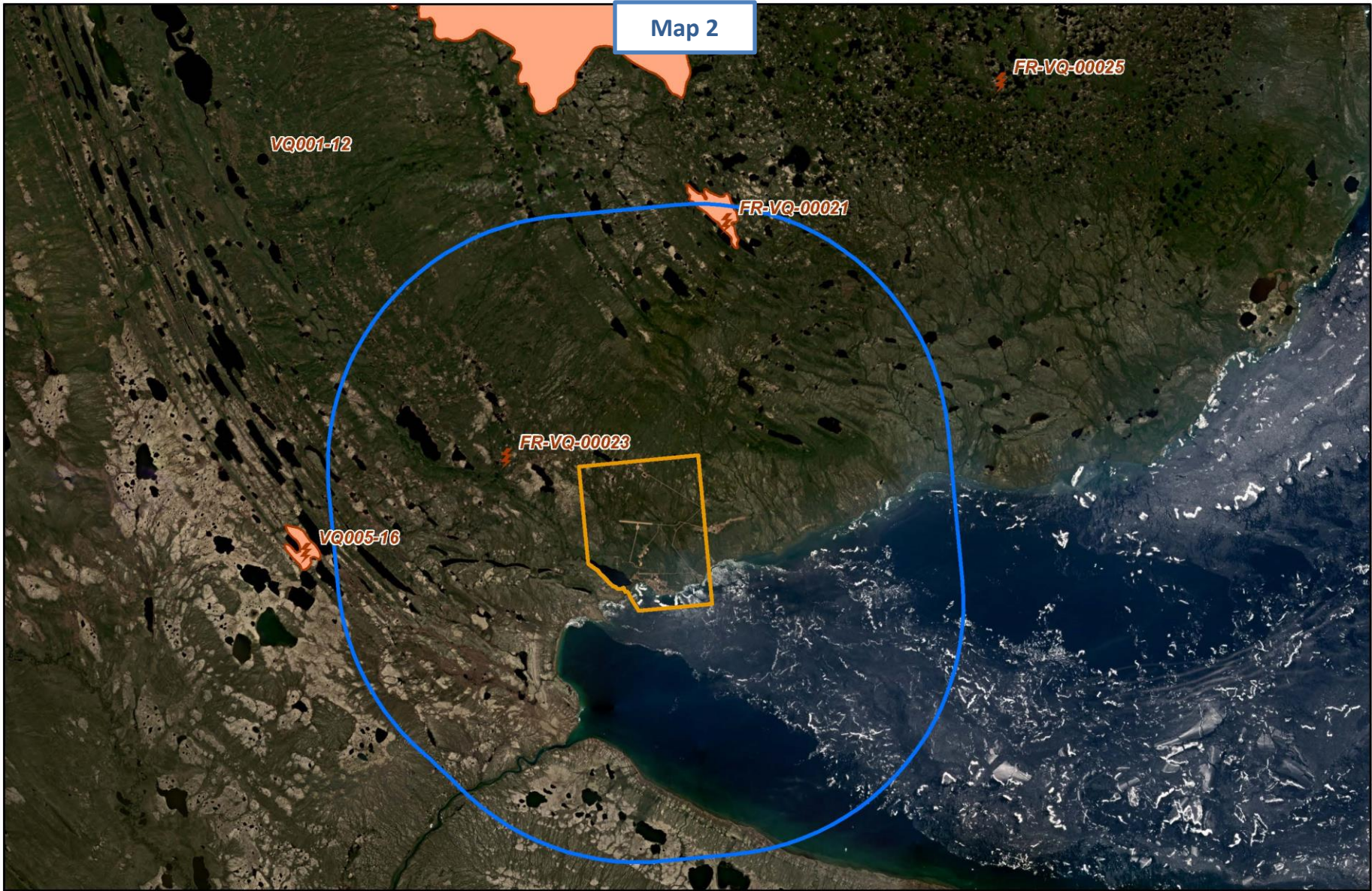
The assessment of recent fire incidence was completed using historical fire data from GNWT Environment and Natural Resources (ENR) for ten year period from 2009 to 2018.

Fire incidence data indicates that 2 lightning-caused wildfires were discovered within a 10 kilometre radius of the community (Table 1). The July 2011 wildfire (VQ-021) was approximately 14 km north of Délı̄nę and resulted in the evacuation of some Délı̄nę residents but did not present any threat to structures in Délı̄nę (Map 2).

**Table 1: Fire Incidence by Cause (2009 - 2018)**

General Cause	Number of Fires	Percent of Total
Human-Caused	0	0
Lightning-Caused	2	100
<b>Totals</b>	<b>2</b>	<b>100</b>

**The risk of wildfire in the planning area is Low and is most frequently lightning-caused.**



# Deline Ten Year Fire History

- Planning Area 10km Buffer
- Planning Area
- Large Fire History
- Human Caused
- ⚡ Lightning
- Unknown

N

1:200,000

0 1,250 2,500 5,000  
Meters



## 3.2 Wildfire Behaviour Potential

### 3.2.1 Forest Fuel Types

Fire Behaviour Prediction (FBP) fuel types were used to analyze the fuel types and fire behaviour potential within and adjacent to Délı̄ne.

The planning area is dominated with spruce-lichen woodland (C-1) fuels with patches of boreal spruce (C-2), cured-grass (O1), mixed wood (M-1/M-2), and non-fuel (NF). Existing fuel breaks are cured-grass (O1) fuel types.

**Forest fuel types and fire weather data indicates that the threat of landscape-level wildfire towards Délı̄ne is Low.**

### 3.3 FireSmart Hazard Assessments

FireSmart hazard assessments (P.I.P., 2017) were conducted on development areas and adjacent wildland fuel types within the planning area (Table 2 ). The FireSmart hazard assessment process evaluates wildland and structural fuel types, structural features, and topography within and adjacent to the development area to consistently quantify the wildland/urban interface hazards within the planning area and to help set priorities for mitigative options.

Hazard factor's for each of the development areas are discussed below.

**Table 2: FireSmart Hazard Assessments**

Development Area	Structure/Site Hazard (0 - 30m)
Délı̄ne	Low - Moderate
Proposed Residential Area	Extreme
Fuel Tank Site	Low
Airport	Low

#### Délı̄ne

FireSmart hazard for Délı̄ne is rated as **LOW** in the majority of the community with structures on the east perimeter at **MODERATE** hazard and structures on the northeast corner at **HIGH** hazard. Fuels primarily consist of non-fuel and cured-grass in the main part of the community with C-1 fuels adjacent to development on the east perimeter and northeast corner of the





community. Exterior structure materials are primarily asphalt shingle/metal roofing and wood, log, and hardiplank siding. Access roads are all-weather loop and dead-end design.

**Proposed New Residential Area**

FireSmart hazard for the proposed residential area north of the old airstrip is **HIGH/EXTREME**. Fuels consist of open to moderate density spruce (C-1/C-2). Several

structures have been erected in this area to date and will be assessed in the near future.

**Fuel Tank Site**

FireSmart hazard for the fuel tank site is rated as **LOW**. Fuels consist of open to moderate density spruce (C-1/C-2) with adequate mineral soil defensible space between the tanks and wildland fuels. Tanks are all new metal construction.



**Airport**

FireSmart hazard for the Airport is rated as **LOW**. Fuels primarily consist of non-fuel and cured grass with significant defensible space between the terminal and wildland fuels. Exterior structure materials are metal roofing and wood siding. The access road is all-weather dead-end design.

**The highest wildfire threat for Délne development exists on the northeast corner of the existing community and in the proposed new residential area north of the old airstrip.**

## 4. Vegetation Management Options

The goal of vegetation management is to create a clear space between the community and the forest to reduce the intensity and rate of spread of wildfire approaching or leaving the community. Vegetation management options are proposed at the appropriate scale, based on hazard and risk, to reduce the threat of wildfire to developed areas. While fuel modification projects reduce the threat of wildfire to developments, they do not ensure structure survival under all hazard conditions.

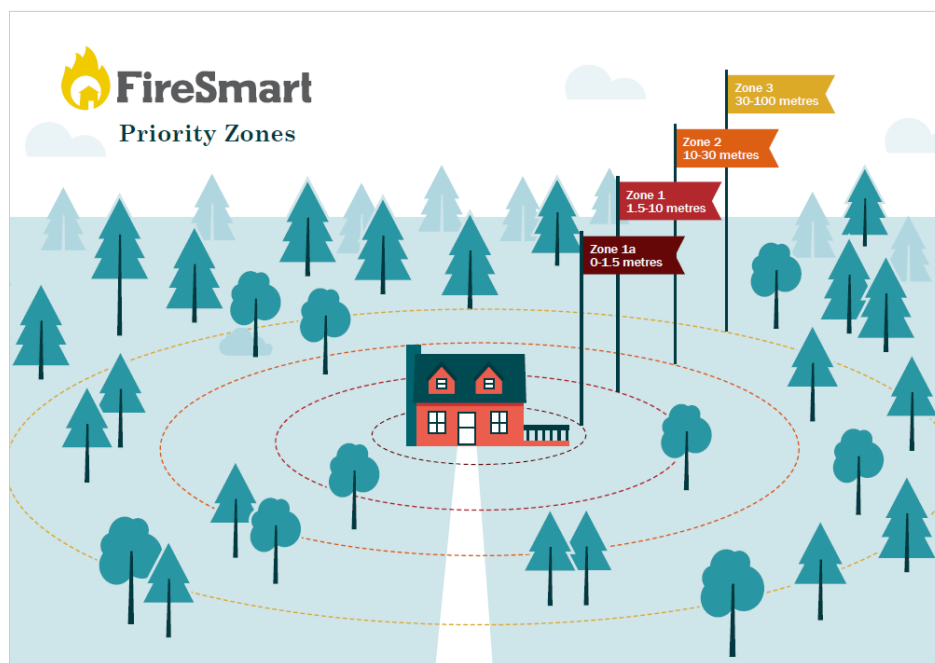
Vegetation management consists of one or any combination of the following options:

- Fuel removal (remove trees)
- Fuel reduction (thin and prune trees)
- Species conversion (plant less flammable trees)

Complete descriptions of the methods included in each of the above options are included in the link:

<https://www.firesmartcanada.ca/mdocs-posts/firesmart-priority-zones-2017/>

*FireSmart* standards refer to the interface priority zones with vegetation management for interface structures recommended in Zones 1 and 1a, 2 at a minimum and in Zone 3 based on hazard and risk.



**Figure 1– FireSmart Priority Zones, FireSmart Canada 2017**

### 4.1 Existing Vegetation Management

Work to refurbish the 50 meter wide fuel breaks constructed by ENR in 1996 on the east and west sides of the community commenced in 2018. These fuel breaks still have some

grass, shrub and deciduous re-growth to be removed however they are still effective for community protection (Table 3 & Map 3).

**Table 3: Existing Vegetation Management Areas**

Name	Area (ha)	Year Established	Agency	Comments
Déline West Fuel Break	7.5	1996	GNWT	Refurbishment started 2018
Déline East Fuel Break	17.6	1996	GNWT	Refurbishment started 2018

## 4.2 Proposed Vegetation Management

### 4.2.1 Zone 1a (0-1.5 metres)

Zone 1a vegetation management is **inadequate** for some structures due to encroachment of native grass fuels.

FireSmart Zone 1a vegetation management options include:

- Creating a noncombustible zone around structures by clearing vegetation and combustible material down to mineral soil within 1.5 metres of structures.
- Use noncombustible materials in this critical zone of 1.5 metres directly adjacent to your home such as gravel, bricks or concrete.
- Woody shrubs, trees or tree branches should be avoided in this area and any that are present should be properly mitigated.



### 4.2.2 Zone 1 (1.5-10 metres)

Zone 1 vegetation management is **adequate** for the majority of structures with a few of the perimeter structures having inadequate defensible space from native grass and open spruce fuels.

FireSmart Zone 1 vegetation management options include:

- Removal of flammable forest vegetation (shrubs) within 10 metres of structures.
- Removal of all coniferous ladder fuels (limbs) to a minimum height of 2 metres from ground level on residual over story trees.
- Removal of all dead and down forest vegetation from the forest floor.
- **Increased maintenance to ensure that all combustible needles, leaves, and native grass are removed from on and around structures.**
- Establishment and maintenance of a non-combustible surface cover around the structure including the use of FireSmart landscaping species.

- **Removal of all combustible material piles (firewood, lumber, jerry cans, propane tanks, etc.) within 10 metres of the structure.**

**Recommendation 1:** Encourage residents to establish adequate Zone 1a and Zone 1 defensible space around their structures.

For more information on FireSmart Zones 1a and 1 standard refer to:  
<https://www.firesmartcanada.ca/>

#### 4.2.3 Zone 2-3 (10-30 metres and 30-100 metres)

Priority areas are recommended for Zone 2-3 fuels management based on hazard and risk (Table 4 & Map 3). Proposed fuels management areas will require detailed fuels reduction planning to identify fuels management prescription, unit boundaries, and operational constraints as development continues.

**Table 4: Priority Fuel Modification Areas**

<b>Priority</b>	<b>Area (Ha)</b>	<b>Proposed Fuel Modification Standards</b>	<b>Land Status Authority</b>
Northeast Residential	3.3	<ul style="list-style-type: none"> <li>▪ Fuels Reduction by spacing spruce to 3 metres crown spacing for a minimum of 100m from structures</li> <li>▪ Remove all dead standing and dead &amp; down coniferous and deciduous</li> <li>▪ Prune limbs to 2 metres</li> <li>▪ Dispose of debris by piling and burning onsite or use as biomass or other product</li> </ul>	<ul style="list-style-type: none"> <li>▪ Délıne Got'ine Government</li> </ul>
Proposed New Fire Guard (Dump)	1.8	<ul style="list-style-type: none"> <li>▪ All vegetation cleared to surface level</li> <li>▪ Dispose of debris by piling and burning onsite or use as biomass or other product</li> </ul>	<ul style="list-style-type: none"> <li>▪ Délıne Got'ine Government</li> </ul>
Proposed New Fire Guard (Tank Farm)	1.1	<ul style="list-style-type: none"> <li>▪ All vegetation cleared to surface level</li> <li>▪ Dispose of debris by piling and burning onsite or use as biomass or other product</li> </ul>	<ul style="list-style-type: none"> <li>▪ Délıne Got'ine Government</li> </ul>
Proposed New Fire Guard (West)	1.3	<ul style="list-style-type: none"> <li>▪ All vegetation cleared to surface level</li> <li>▪ Dispose of debris by piling and burning onsite or use as biomass or other product</li> </ul>	<ul style="list-style-type: none"> <li>▪ Délıne Got'ine Government</li> </ul>
Proposed New Fire Guard (East)	9.9	<ul style="list-style-type: none"> <li>▪ All vegetation cleared to surface level</li> <li>▪ Dispose of debris by piling and burning onsite or use as biomass or other product</li> </ul>	<ul style="list-style-type: none"> <li>▪ Délıne Got'ine Government</li> </ul>
<b>Total</b>	<b>17.4</b>		

**Recommendation 2:** Zone 2-3 fuels reduction and maintenance is the responsibility of the Land Status Authority holder(s) and should be implemented based on the areas identified in this plan.

#### **4.2.4 Fuel Breaks**

Additional areas around the perimeter of the community have been identified for possible fuel modification to effectively create protective fire breaks. Total area requiring modification for this portion of work is 14.1 hectares. (see above table 4)

**Recommendation 3:** ENR will work with the community in planning for the fuel modification required. Method of modification would be fuel reduction or stand/species conversion.

#### **4.3 Vegetation Management Maintenance**

Fuel modification area maintenance schedules depend on many factors including fuel type, soil and moisture conditions, and specific weather events. FireSmart Zone 1a and Zone 1 fuel modification maintenance is a process requiring continued maintenance. Residents should be educated and encouraged to maintain their properties regularly to reduce the threat of wildfire to their structures.

**Recommendation 4:** Residents should be educated and encouraged to maintain their properties regularly to reduce the threat of wildfire to their structures.

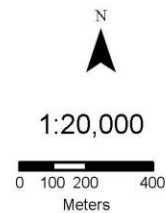
Map 3



**Deline  
Fuel Modifications**  
Completed and Proposed

**Fuel Modifications**

-  Completed
-  In Progress
-  Proposed



## 5. Development Options

Consideration of wildfire at the planning stage of new development is encouraged to ensure that wildfire hazard and appropriate mitigation measures are developed and implemented prior to development.

New developments may overlap or conflict with existing fuel modification resulting in a reduction in fuel break effectiveness and an increase in wildfire threat to the new or existing development in the area.

The proposed new residential development area, north of the old airstrip, is located in a High/Extreme FireSmart hazard area and requires FireSmart planning and hazard reduction prior to development.

**Recommendation 5:** If a new development removes or reduces the effectiveness of any existing or proposed FireSmart mitigation measures or introduces new wildfire hazards, the area must be assessed and measures implemented to maintain the community protection standards.

### 5.1 Structural Options

Structural characteristics that contribute to a structure's ability to withstand wildfire ignition include type of roofing and siding material, and proper construction and maintenance of eaves, vents, and openings that can accumulate flammable debris and allow wildfire to gain entry to the structure.

The most common roofing materials the planning area are asphalt shingle and metal with wood-shakes on the Délı̄ne Got'ine Government building.

Siding materials vary between hardiplank on newer structures and wood and log on older structures.

Many structures have combustible debris piles (firewood, lumber, etc.) immediately adjacent to the structure, increasing the threat of wildfire to the structure. Open decks and undersides are common. In addition, most structures that use skirting employ a mesh that is too open spaced in design to block embers. It is applied primarily as a wildlife deterrent.



in



## **5.2 Infrastructure Options**

Infrastructure options include provision of adequate access standards to ensure quick and safe ingress and egress for residents and emergency responders during a wildfire, adequate and accessible water supply for structure protection and suppression, and utility installation standards that do not increase risk to emergency responders during a wildfire emergency.

### **5.2.1 Access**

Access road standards throughout the planning area are adequate for an interface community. Access roads are all-weather loop and dead-end design. There is no summer road access to the community.

### **5.2.2 Water Supply**

Déliné does not have municipal hydrant water-supply. All development areas rely on water-tender supply for structure protection activities. Each home is equipped with an in-house water tank.

### **5.2.3 Franchised Utilities**

Franchised utilities affected by an interface fire include electrical power and heating fuel. Proper installation and maintenance of these services can minimize the risk to residents and emergency services personnel.

#### **Electrical Power**

Power distribution and residential service is provided through above-ground powerlines from the NTPC diesel generator plant.

#### **Heating Fuel**

Heating fuel is provided by truck delivery and is stored in bulk at a tank farm.

## 6. Public Education Options

Public education plays a key role in promoting and implementing FireSmart principles and projects. Residents, landowners, municipal administration, and elected officials all need to be aware of the risk of wildfires and the solutions to minimizing the risk, and need to become a partner in implementation of the solutions in their communities. If stakeholders understand the issues relating to wildland/urban interface hazard they will be more likely to take action on their own property or to support actions taken by other authorities.

Residents and stakeholders can refer to the GNWT ENR, Forest Management Division website at: <https://www.enr.gov.nt.ca/en/services/be-firesmart> for further information on the GNWT FireSmart program, current wildfire updates, and other wildfire management related information.

### Key Messages

FireSmart hazard assessments identified the need for the following key messages to target audiences in the planning area.

#### Homeowners

Homeowners can increase resiliency of homes and make them less vulnerable to wildfire by development and maintenance of the FireSmart Non-Combustible Zone 1a (0-1.5 metres) and Zone 1 (1.5-10 metres) defensible space surrounding the home, by:

- Clearing vegetation and combustible material down to mineral soil within 1.5 metres of structures.
- Using noncombustible materials in this critical zone of 1.5 metres directly adjacent to your home such as gravel, bricks or concrete.
- Woody shrubs, trees or tree branches should be avoided in this area and any that are present should be properly mitigated
- Storing firewood and other combustible materials more than 10 metres away from the home
- Keeping roof and eaves clear of leaves and other combustible debris
- Creating propane and fuel-tank FireSmart defensible space
- Creating a non-combustible zone for underneath and around any trailers/vehicles and mitigate sheds and other structures to the same standards as those of your home
- If possible and/or applicable maintain Zone 2 (10-30 metres) and Zone 3 (30-100 metres) recommendations, and work with neighbors in any overlapping Priority Zones.

## Communities

Communities can reduce wildfire risk and adopting FireSmart principles by:

- Holding a FireSmart Wildfire Community Preparedness Day or workshop;
- Using local government websites, social media and newsletters to promote FireSmart principles;
- Asking ENR staff what educational and/or promotional resources they have available, such as wildfire information pamphlets, posters, educational resources, videos etc;
- Applying for the FireSmart Community Recognition Program. For more information visit: [www.firesmartcanada.ca/firesmart-communities/firesmart-canada-community-recognition-program/](http://www.firesmartcanada.ca/firesmart-communities/firesmart-canada-community-recognition-program/).

**Recommendation 6:** Public education on acceptable FireSmart Zone 1a and Zone 1 standards is recommended for all residents.

## 7. Inter-Agency Cooperation and Cross-Training Options

Interagency cooperation and cross-training between all stakeholders is necessary to ensure cooperative and effective implementation of wildland/urban interface mitigation options and to coordinate an effective response to a wildland/urban interface fire.

Interagency stakeholders within the planning area include:

- Délıne Got'ine Government
- GNWT

**Recommendation 7:** Coordinate with the established emergency management committee to determine what will be required during a wildfire emergency. All relevant stakeholders should understand the FireSmart program and help to promote mitigation.

Délıne has an active fire department, one Type I engine and access to three local water tenders. Some members have been trained in Basic Wildfire (S-131) and Incident Command System (I-100 and I-200). Recommended cross-training for fire department members and ENR wildfire suppression personnel should include basic wildfire, wildland/urban interface fire, and incident command system training courses.

The following cross-training courses are available:

### **Wildland Fire**

- Wildland Firefighter (NFPA 1051 Level I, S-131, or equivalent)

### **Wildland/Urban Interface Fire**

- Structure and Site Preparation Workshop (S-115)

### **Incident Command System**

- ICS Orientation (I-100)
- Basic ICS (I-200)
- Intermediate ICS (I-300)

**Recommendation 8:** The Délıne Fire Department, the Emergency Management Team and the GNWT should partner on cross-training initiatives to ensure emergency responders are cross-trained to the following:

- Wildland Firefighter
- Structure and Site Preparation Workshop (S-115)
- Incident Command System (I-100 to I-300) as applicable

## 8. Emergency Planning Options

Emergency preparedness is an important part of any disaster planning. The need for organization, clear chain of command, and an understanding of job responsibilities during an interface fire are of paramount importance.

The Délı̄ne Emergency Measures Plan is used to provide authority and direction during an emergency.

The community is working with GNWT MACA to develop a wildfire pre-plan to provide emergency responders with detailed tactical information with respect to values at risk and operational strategies and tactics to minimize losses during a wildland/urban interface fire. GNWT MACA has developed a template for community use in creating an EMP.

**Recommendation 9:** Develop a Community Wildfire Pre-Plan for the community to provide greater operational detail to emergency responders during a wildland/urban interface incident.

## 9 Recommendations Summary

### Vegetation Management

Issue	Recommendation	Responsible Agency
<b>Zone 1a and Zone 1</b>	<b>Recommendation 1:</b> Encourage residents to establish adequate Zone 1a and Zone 1 defensible space around their structures.	<ul style="list-style-type: none"> <li>▪ Délıne Got'ine Government</li> </ul>
<b>Zone 2-3</b>	<b>Recommendation 2:</b> Zone 2-3 fuels reduction and maintenance is the responsibility of the Land Status Authority holder(s) and should be implemented based on the priorities identified in this plan.	<ul style="list-style-type: none"> <li>▪ Délıne Got'ine Government</li> </ul>
<b>Fire Breaks</b>	<b>Recommendation 3:</b> ENR will work with the community in planning for the fuel modification required. Method of modification would be fuel reduction or stand/species conversion.	<ul style="list-style-type: none"> <li>▪ Délıne Got'ine Government</li> </ul>
<b>Maintenance</b>	<b>Recommendation 4:</b> Residents should be educated and encouraged to maintain their properties regularly to reduce the threat of wildfire to their structures.	<ul style="list-style-type: none"> <li>▪ Délıne Got'ine Government</li> </ul>

### Development

Issue	Recommendation	Responsible Agency
<b>FireSmart Development Planning</b>	<b>Recommendation 5:</b> If a new development removes or reduces the effectiveness of any existing or proposed FireSmart mitigation measures or introduces new wildfire hazards, the area must be assessed and measures implemented to maintain the community protection standards.	<ul style="list-style-type: none"> <li>▪ Délıne Got'ine Government</li> </ul>

### Public Education

Issue	Recommendation	Responsible Agency
<b>Public Education Priorities</b>	<b>Recommendation 6:</b> Public education on acceptable FireSmart Zone 1a and Zone 1 standards is recommended for all Délıne residents.	<ul style="list-style-type: none"> <li>▪ Délıne Got'ine Government</li> <li>▪ GNWT</li> </ul>

## Interagency Cooperation & Cross-Training

Issue	Recommendation	Responsible Agency
<b>Interagency Cooperation</b>	<b>Recommendation 7:</b> Coordinate with the established emergency management committee to determine what will be required during a wildfire emergency. All relevant stakeholders should understand the FireSmart program and help to promote mitigation.	<ul style="list-style-type: none"> <li>▪ Délıne Got'ine Government</li> <li>▪ GNWT</li> </ul>
<b>Cross-Training</b>	<p><b>Recommendation 8:</b> The Délıne Fire Department, the Emergency Management Team and GNWT should partner on cross-training initiatives to ensure emergency responders are cross-trained to the following:</p> <ul style="list-style-type: none"> <li>▪ Wildland Firefighter</li> <li>▪ Structure and Site Preparation Workshop (S-115)</li> <li>▪ Incident Command System (I-100 to I-300) as applicable</li> </ul>	<ul style="list-style-type: none"> <li>▪ Délıne Got'ine Government</li> <li>▪ GNWT</li> </ul>

## Emergency Planning

Issue	Recommendation	Responsible Agency
<b>Community Wildfire Pre- Planning</b>	<b>Recommendation 9:</b> Develop a Community Wildfire Pre-Plan for the community to provide greater operational detail to emergency responders during a wildland/urban interface incident.	<ul style="list-style-type: none"> <li>▪ Délıne Got'ine Government</li> <li>▪ GNWT</li> </ul>