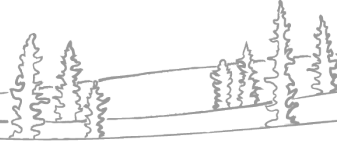




NWT Water Monitoring Bulletin

– October 03, 2022



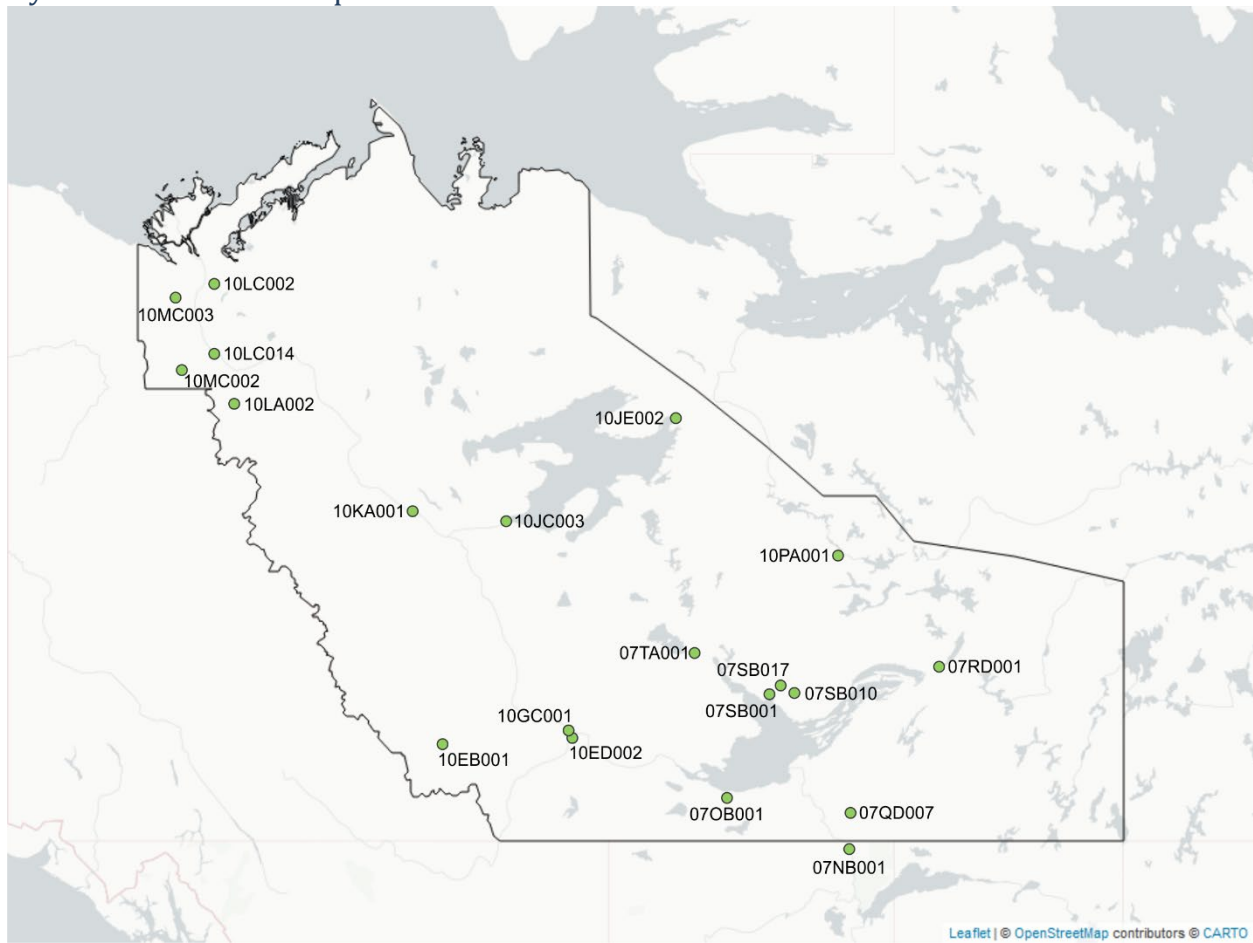
NWT Water Monitoring Bulletins are posted monthly. These bulletins are intended to provide an update of water flow and level data at select NWT Hydrometric Network gauge stations across the Northwest Territories. Where available, data from river sites are presented as flow (discharge) and data from lake sites are presented as level. When flow data are unavailable, data from river sites are presented as level. The figures in this report represent current conditions for this year, relative to historic minimum and maximum values, as well as the average range, which is calculated as the interquartile range. All 2022 data are considered provisional and may contain values that are later corrected. The NWT Hydrometric Network is a partnership between ENR and Environment and Climate Change Canada (ECCC) and is operated by the Water Survey of Canada (ECCC). Both historic and real-time data for all stations are available at https://wateroffice.ec.gc.ca/index_e.html.

Any questions regarding information contained therein can be directed to NWTWaters@gov.nt.ca.

Contents

Hydrometric station map.....	3
Slave River at Fitzgerald [07NB001]	4
Hay River near Hay River [07OB001]	4
Taltson River below Hydro Dam [07QD007]	5
Lockhart River at outlet of Artillery Lake [07RD001]	5
Coppermine River below Desteffany Lake [10PA001].....	6
Great Slave Lake at Yellowknife Bay [07SB001].....	6
Cameron River below Reid Lake [07SB010]	7
Prelude Lake near Yellowknife [07SB017].....	7
La Martre River below outlet of Lac La Martre [07TA001]	8
South Nahanni River above Virginia Falls [10EB001]	8
Liard River near the Mouth [10ED002].....	9
Mackenzie River at Fort Simpson [10GC001]	9
Great Bear River at outlet of Great Bear Lake [10JC003].....	10
Great Bear Lake at Hornby Bay [10JE002].....	10
Arctic Red River near the mouth [10LA002]	11
Peel River above Fort McPherson [10MC002]	11
Mackenzie River at Arctic Red River [10LC014]	12
Mackenzie River (East Channel) at Inuvik [10LC002]	12
Mackenzie River (Peel Channel) above Aklavik [10MC003].....	13

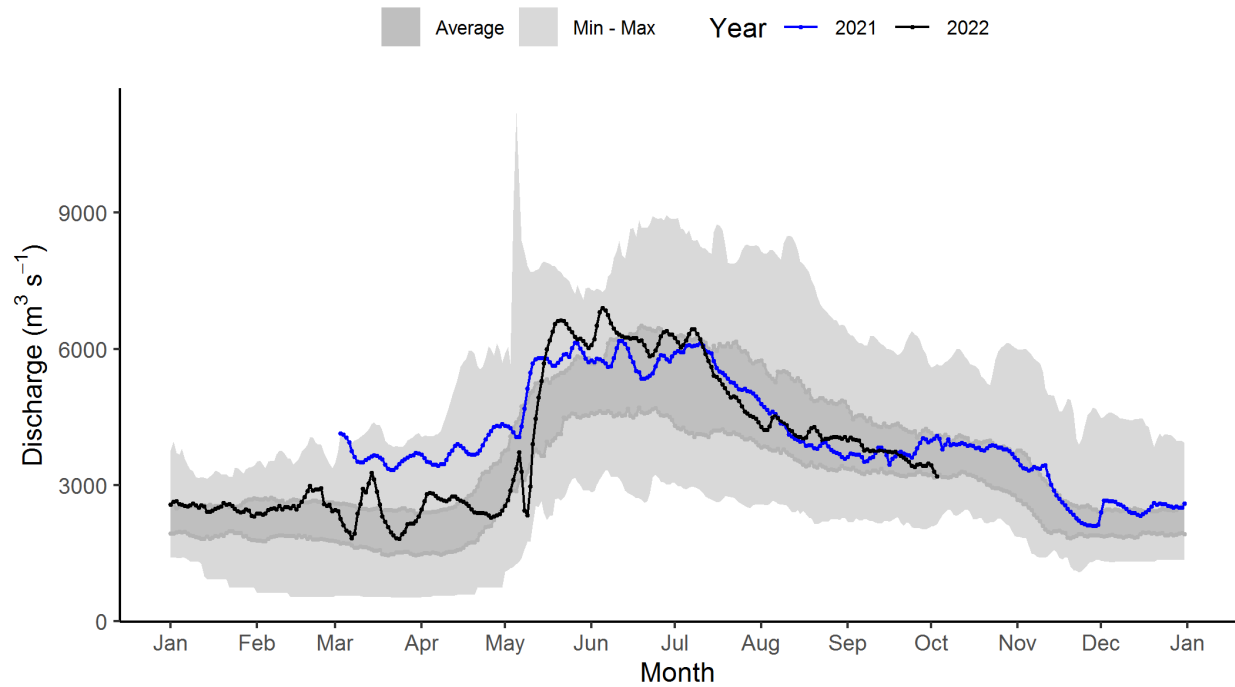
Hydrometric station map



Above – A map of the hydrometric stations included in this report.

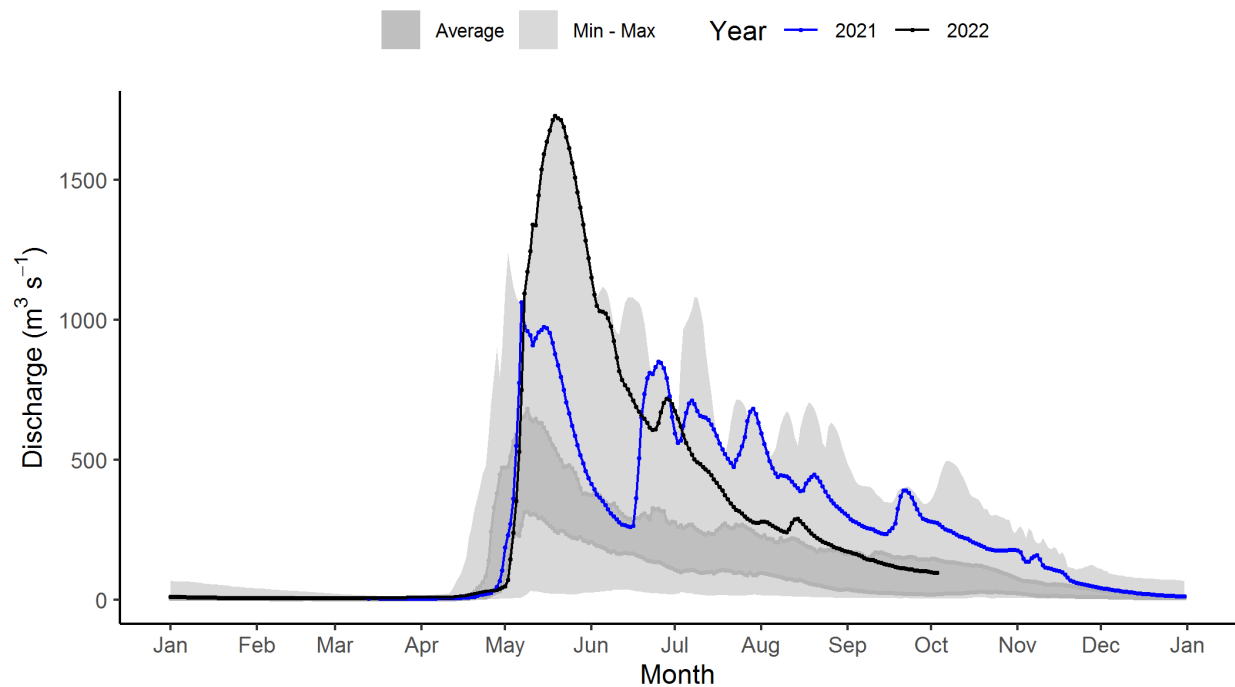
Slave River at Fitzgerald [07NB001]

SLAVE RIVER AT FITZGERALD (ALBERTA) (07NB001)



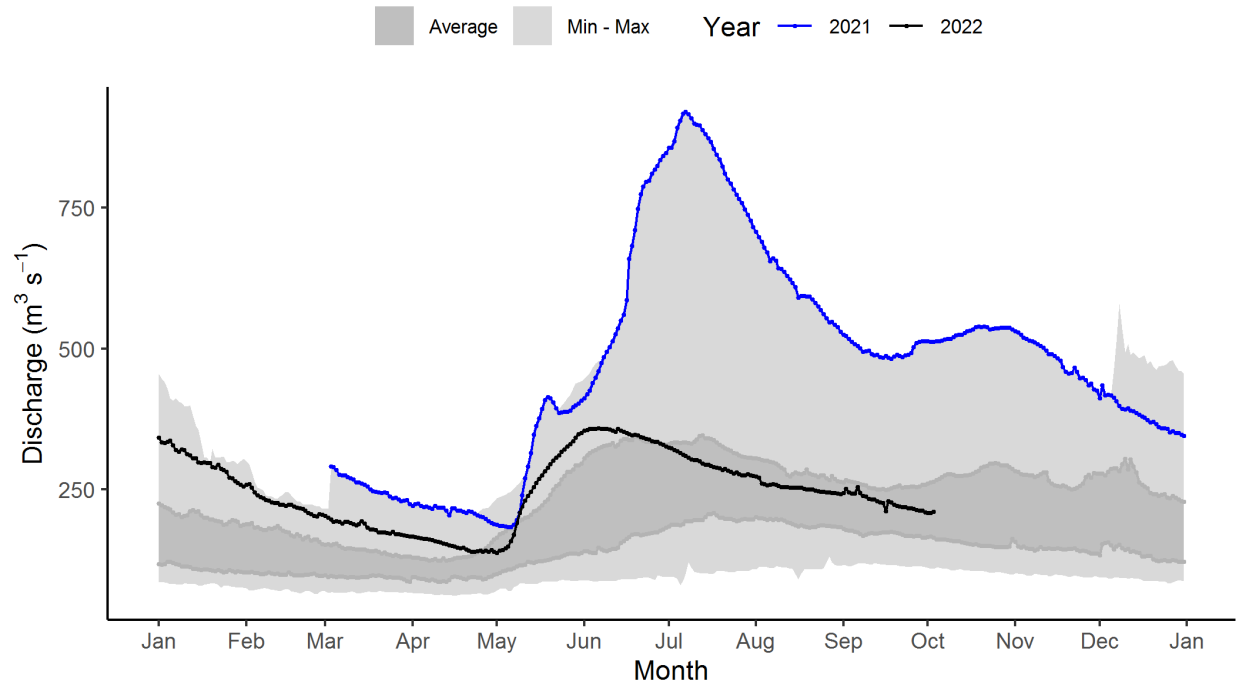
Hay River near Hay River [07OB001]

HAY RIVER NEAR HAY RIVER (07OB001)



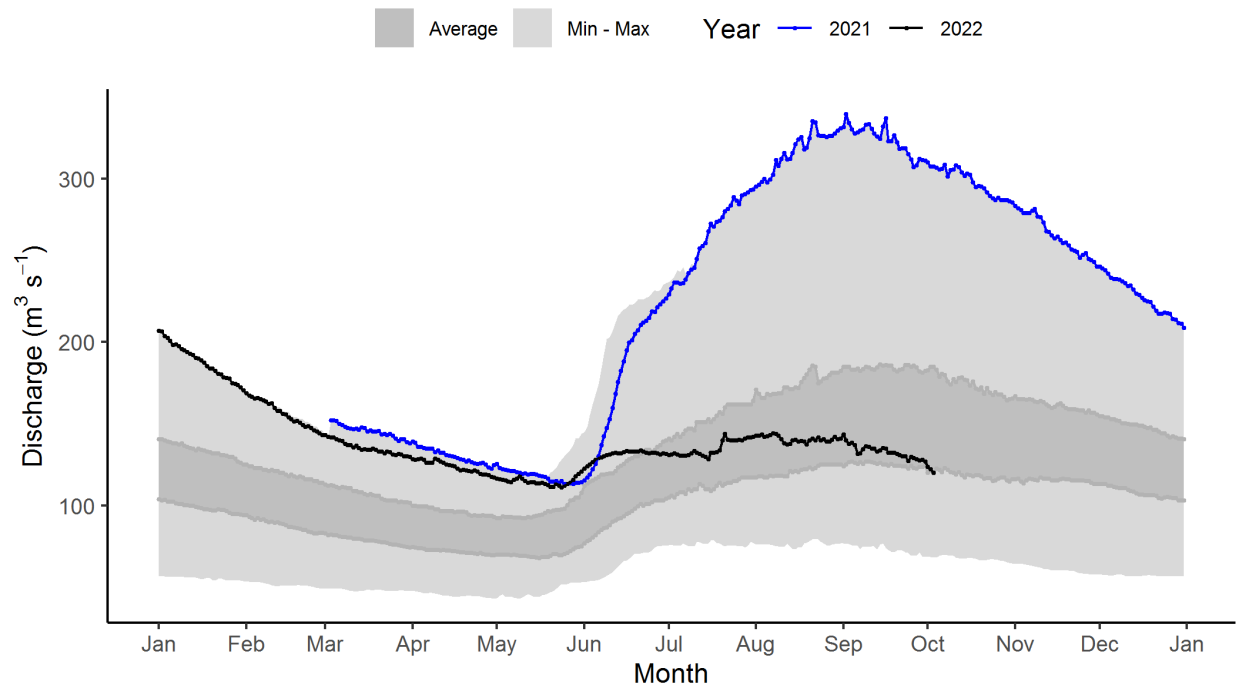
Taltson River below Hydro Dam [07QD007]

TALTSON RIVER BELOW HYDRO DAM (07QD007)



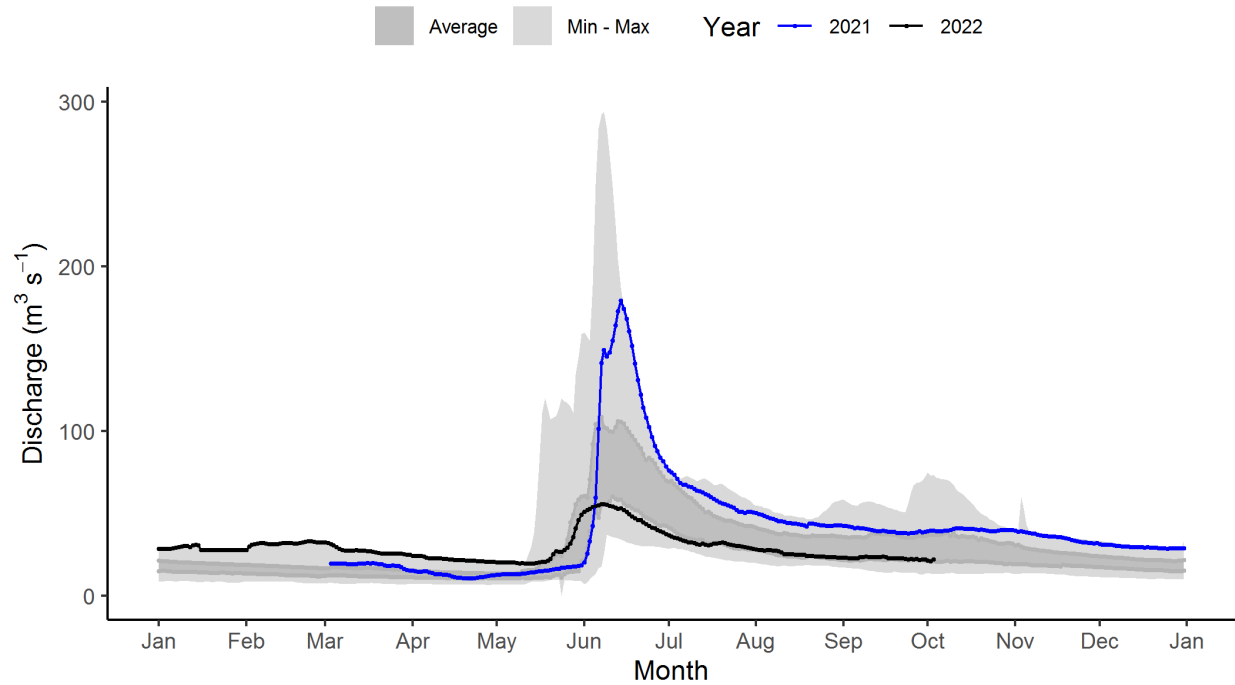
Lockhart River at outlet of Artillery Lake [07RD001]

LOCKHART RIVER AT OUTLET OF ARTILLERY LAKE (07RD001)



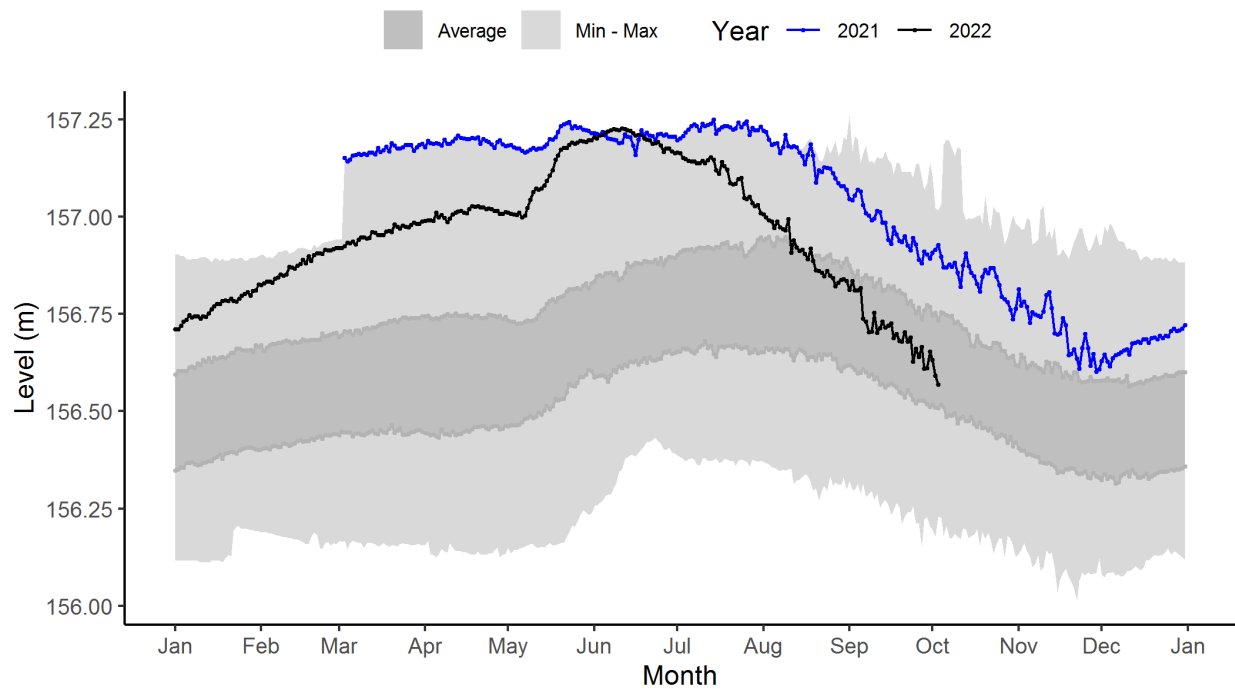
Coppermine River below Desteffany Lake [10PA001]

COPPERMINE RIVER BELOW DESTEFFANY LAKE (10PA001)



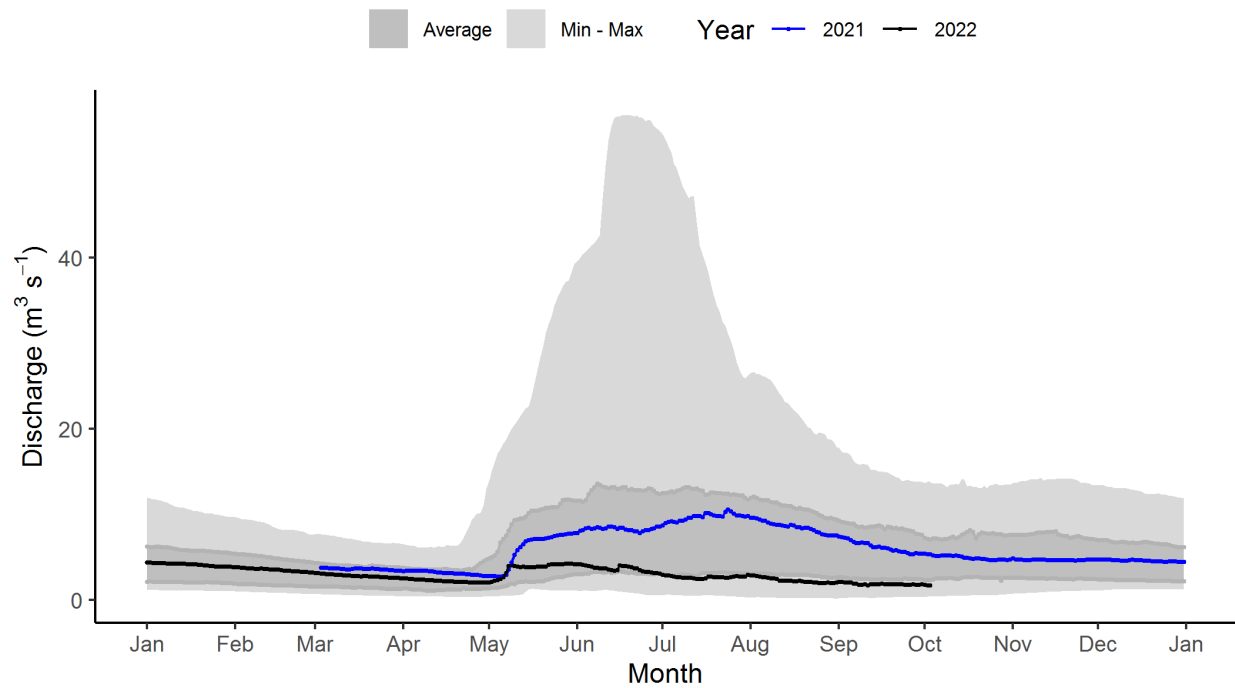
Great Slave Lake at Yellowknife Bay [07SB001]

GREAT SLAVE LAKE AT YELLOWKNIFE BAY (07SB001)



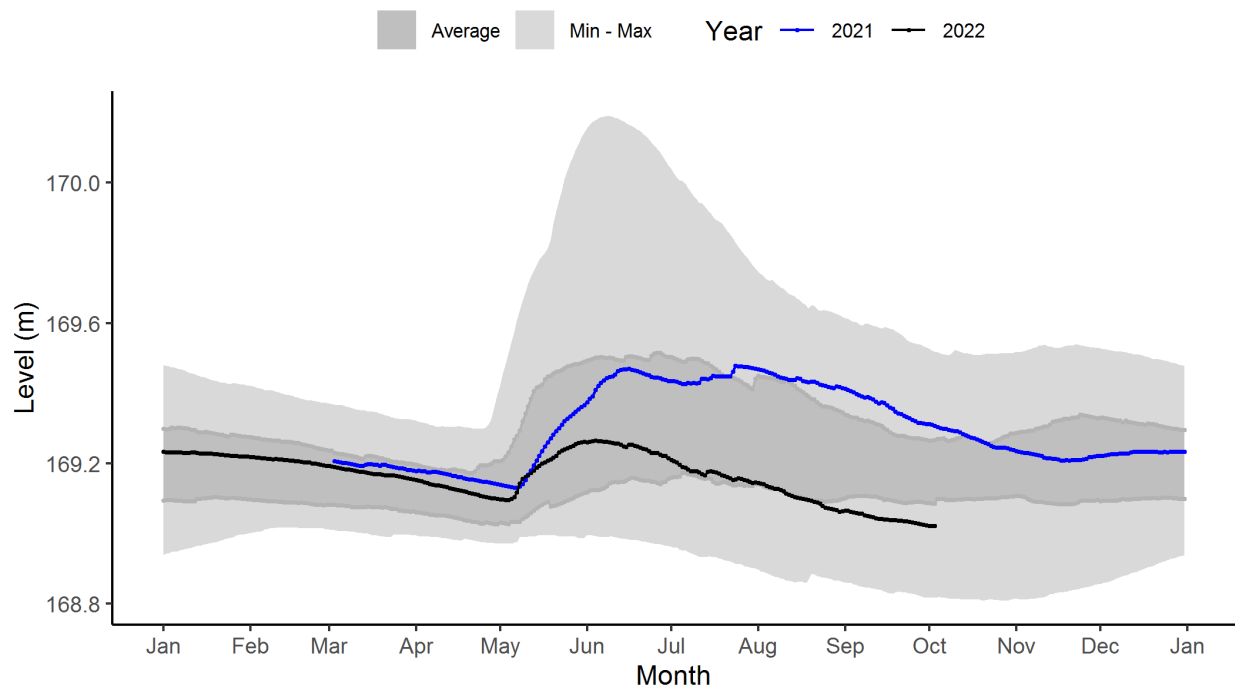
Cameron River below Reid Lake [07SB010]

CAMERON RIVER BELOW REID LAKE (07SB010)



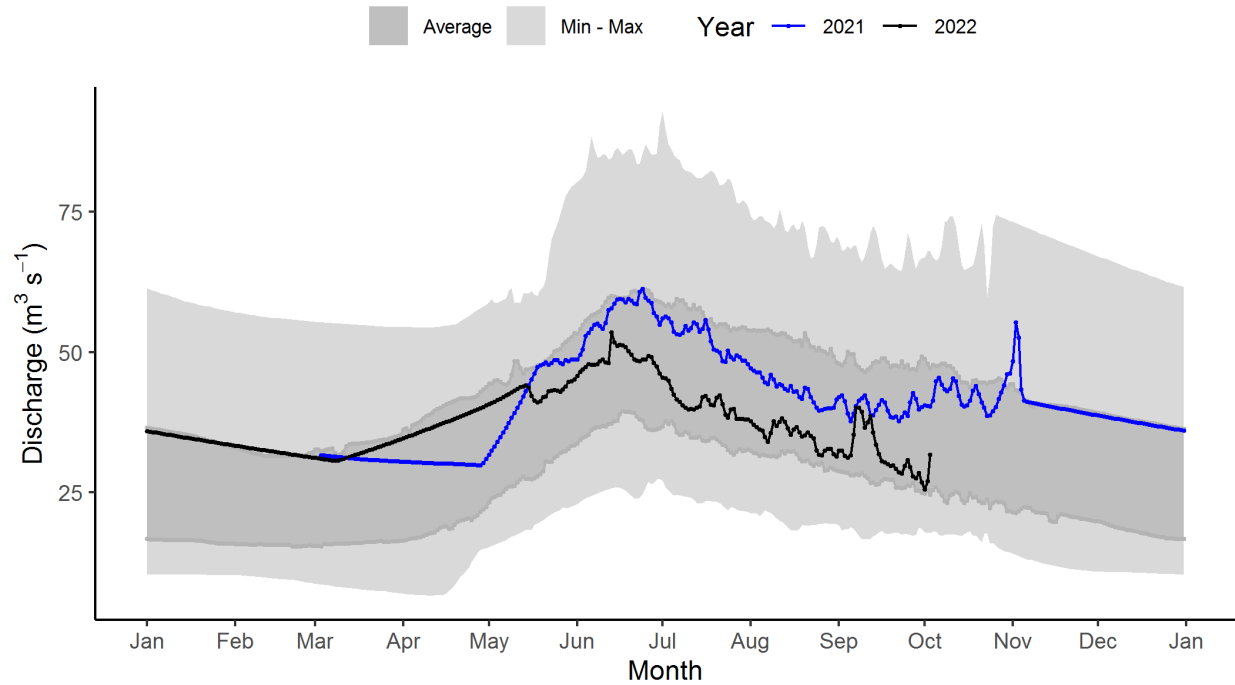
Prelude Lake near Yellowknife [07SB017]

PRELUDE LAKE NEAR YELLOWKNIFE (07SB017)



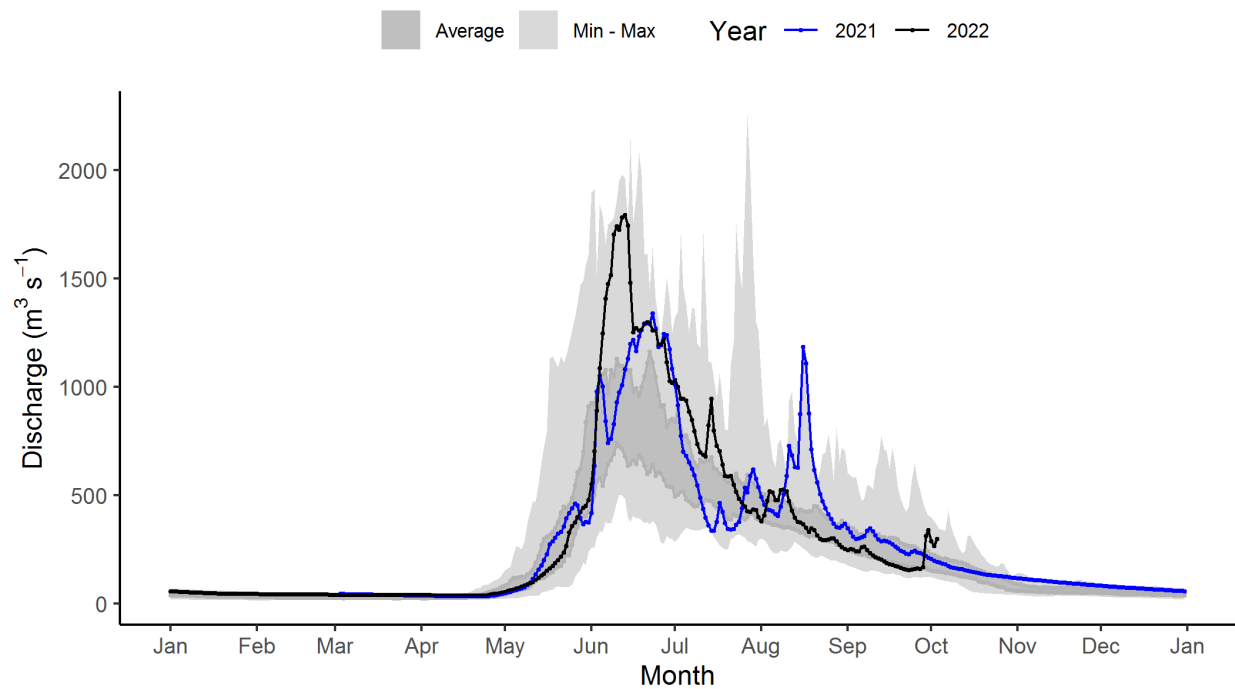
La Martre River below outlet of Lac La Martre [07TA001]

LA MARTRE RIVER BELOW OUTLET OF LAC LA MARTRE (07TA001)



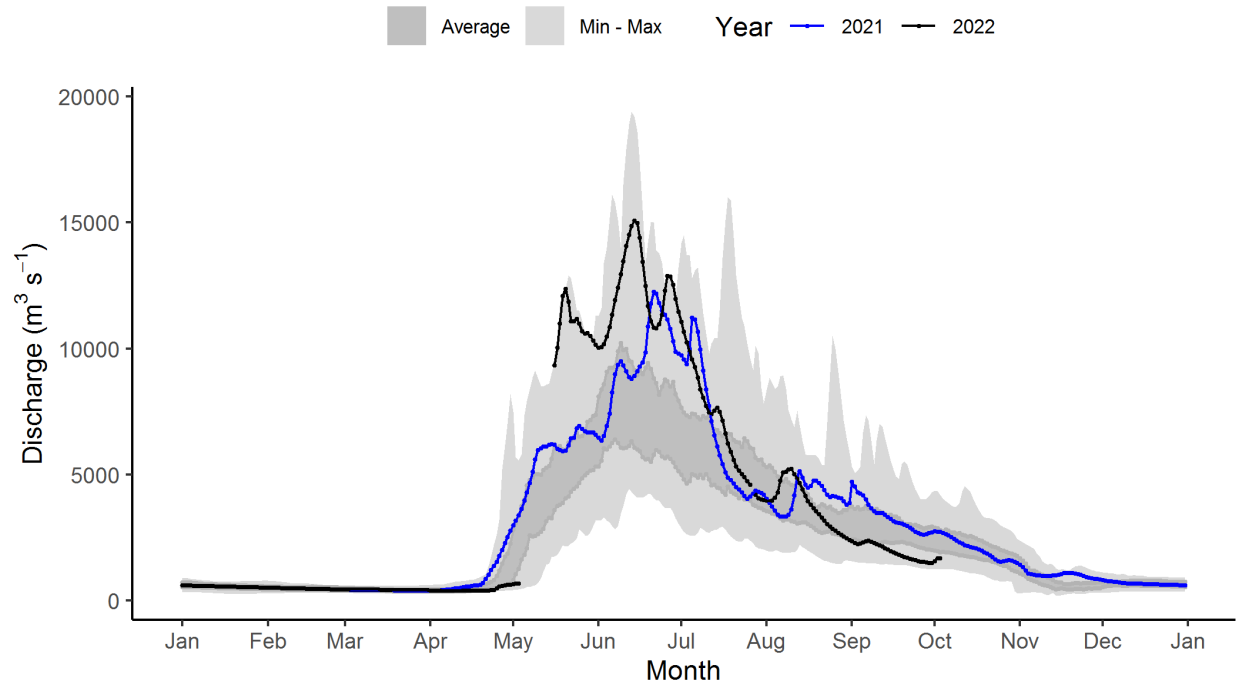
South Nahanni River above Virginia Falls [10EB001]

SOUTH NAHANNI RIVER ABOVE VIRGINIA FALLS (10EB001)



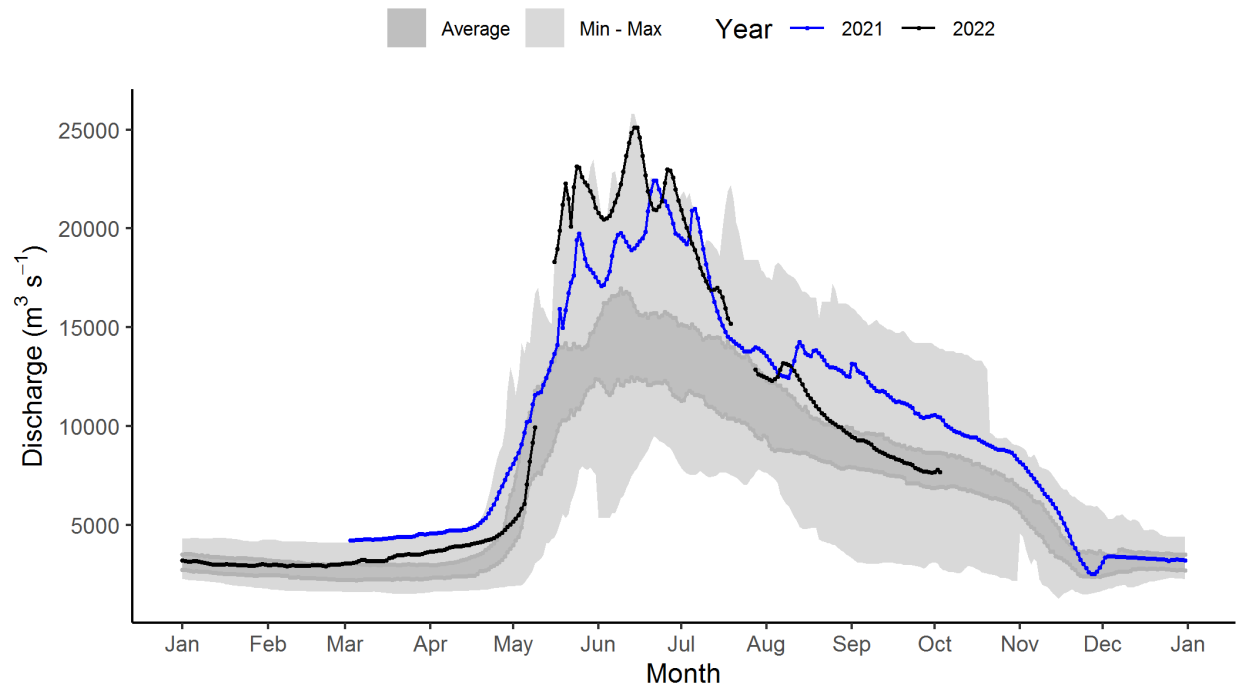
Liard River near the Mouth [10ED002]

LIARD RIVER NEAR THE MOUTH (10ED002)



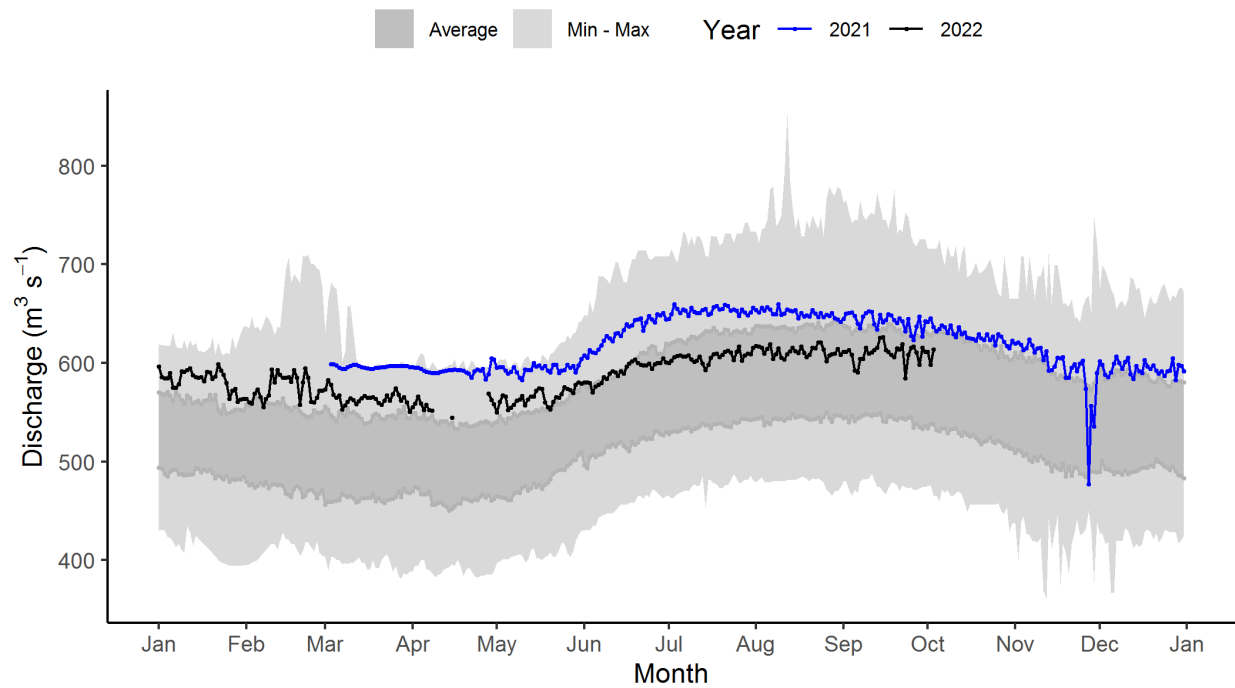
Mackenzie River at Fort Simpson [10GC001]

MACKENZIE RIVER AT FORT SIMPSON (10GC001)



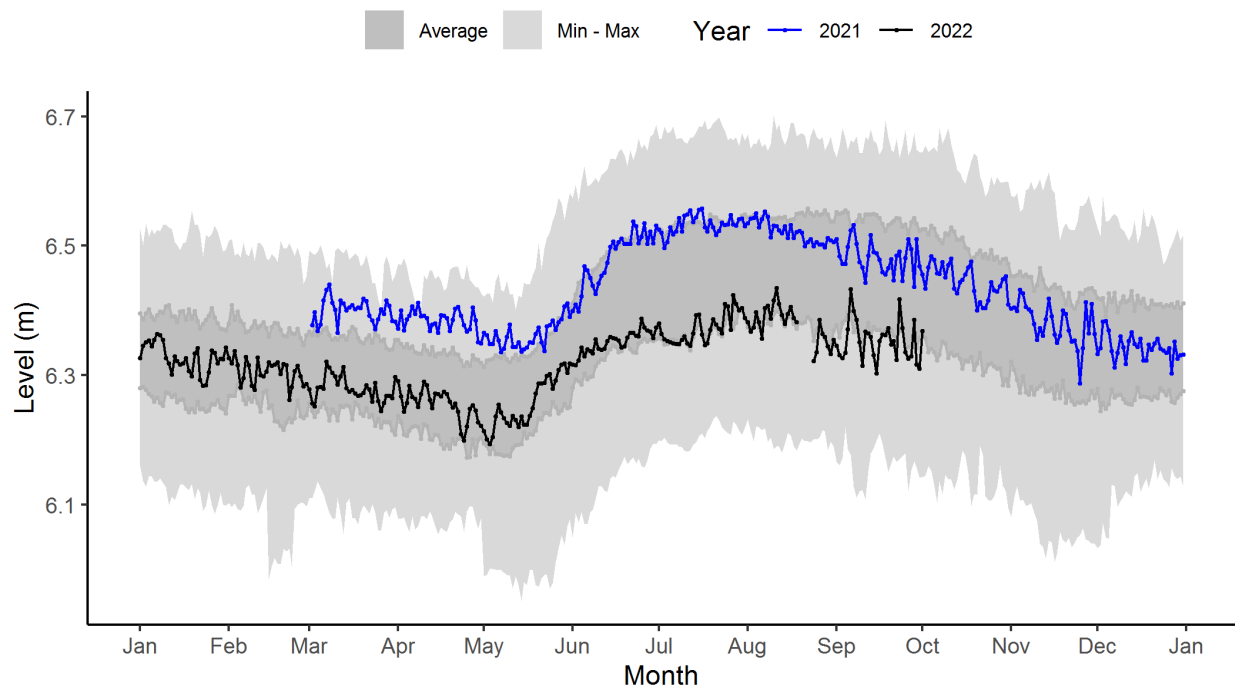
Great Bear River at outlet of Great Bear Lake [10JC003]

GREAT BEAR RIVER AT OUTLET OF GREAT BEAR LAKE (10JC003)



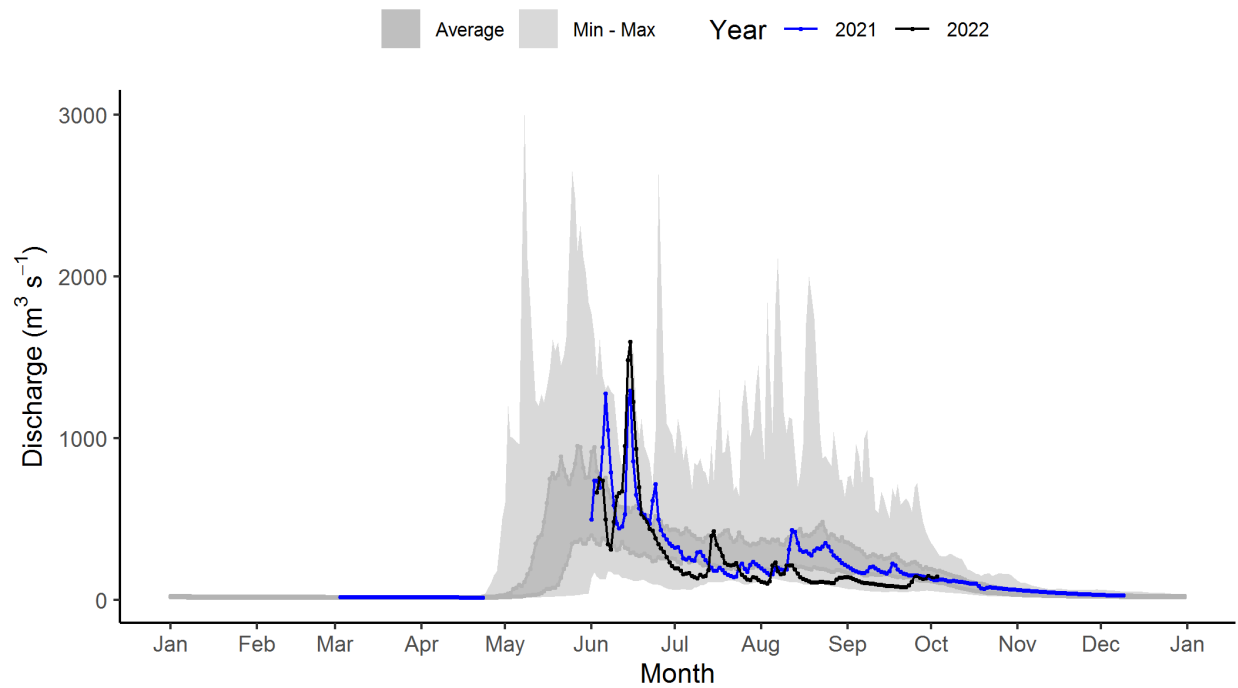
Great Bear Lake at Hornby Bay [10JE002]

GREAT BEAR LAKE AT HORNBY BAY (10JE002)



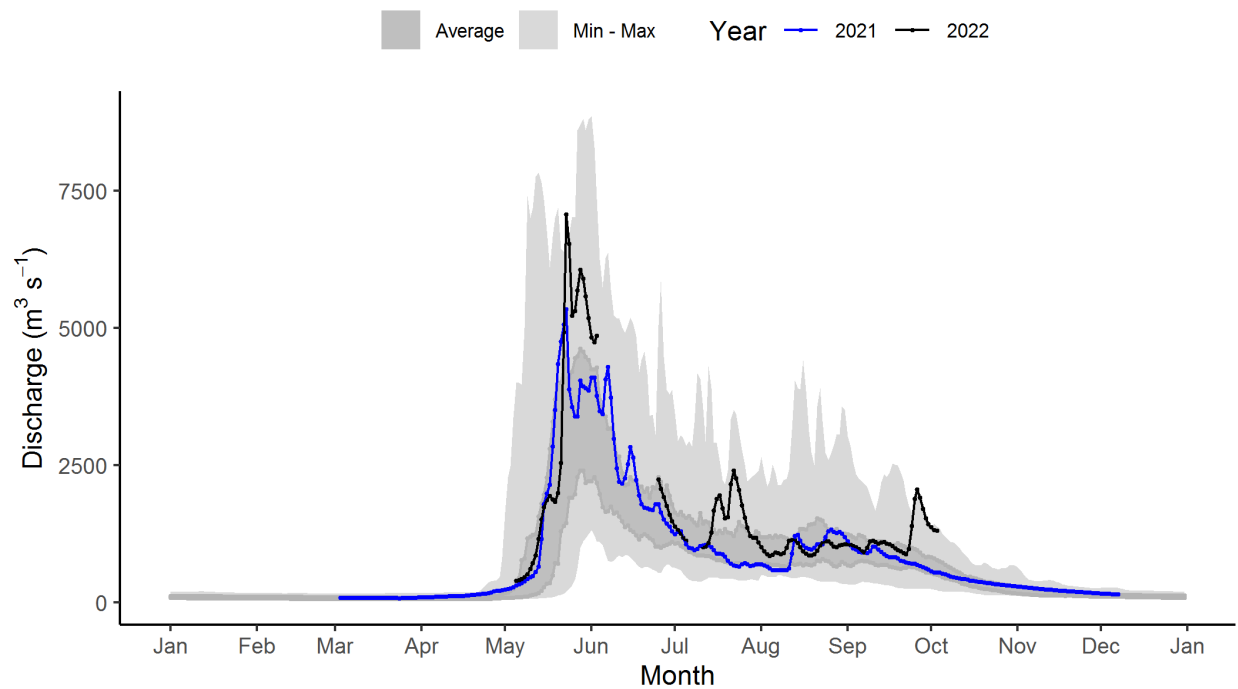
Arctic Red River near the mouth [10LA002]

ARCTIC RED RIVER NEAR THE MOUTH (10LA002)



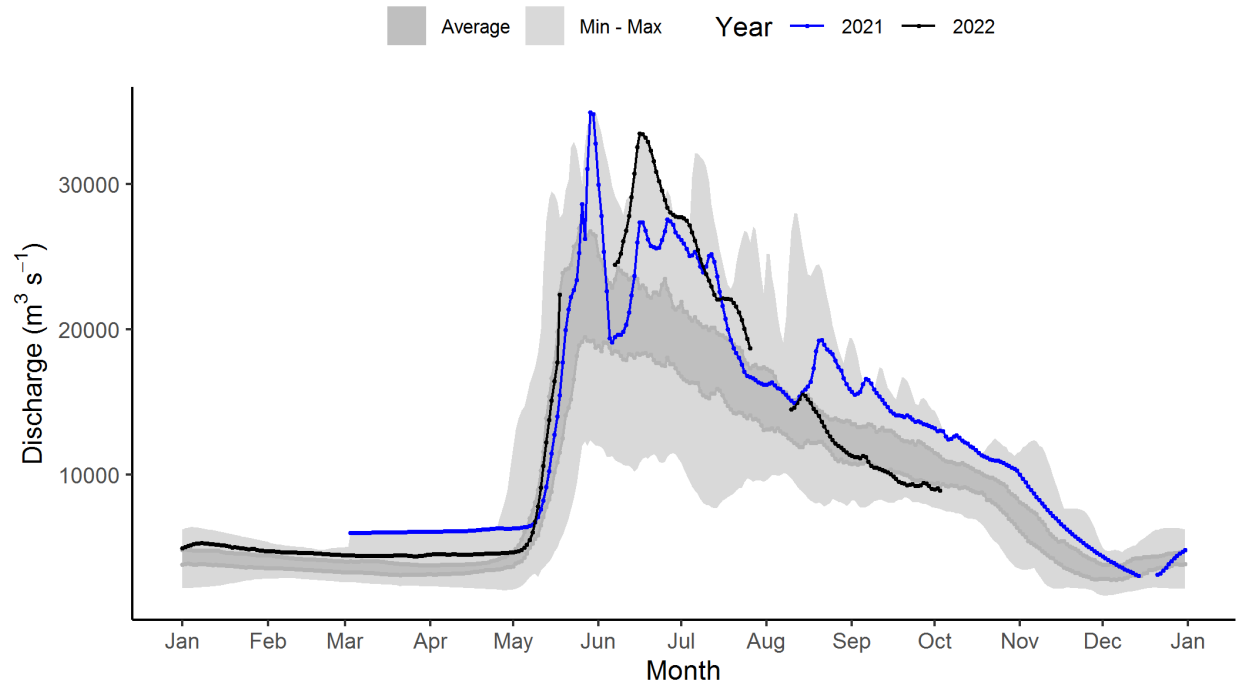
Peel River above Fort McPherson [10MC002]

PEEL RIVER ABOVE FORT MCPHERSON (10MC002)



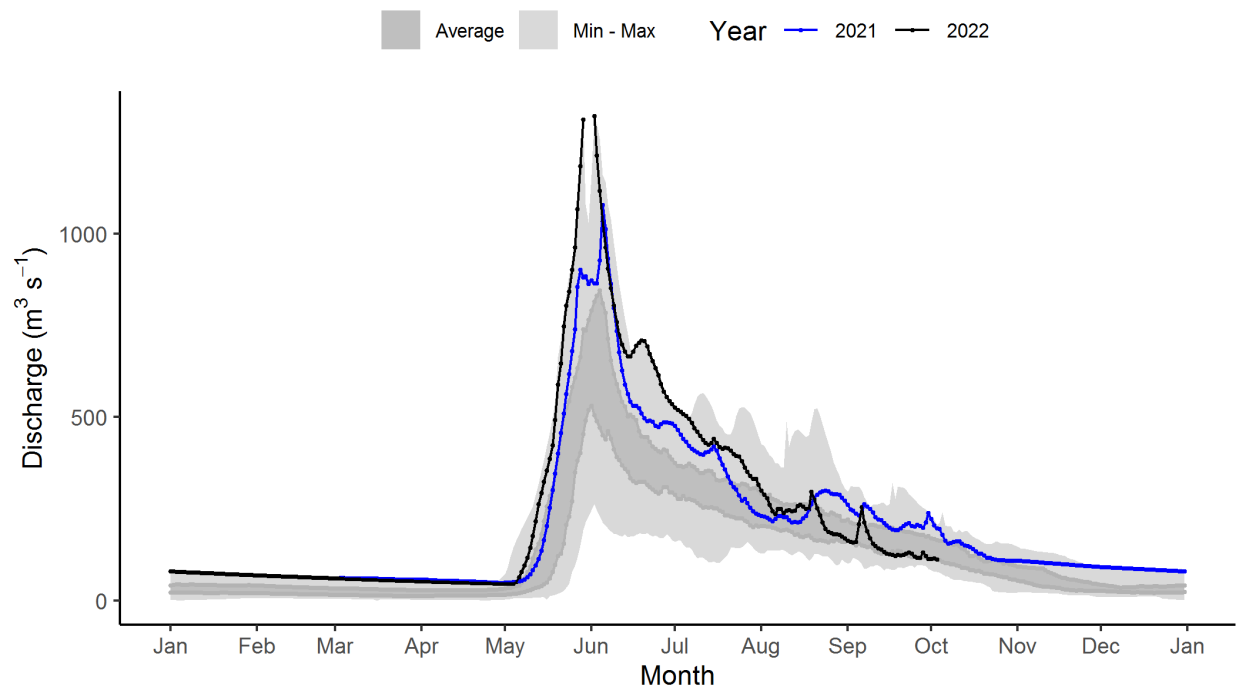
Mackenzie River at Arctic Red River [10LC014]

MACKENZIE RIVER AT ARCTIC RED RIVER (10LC014)



Mackenzie River (East Channel) at Inuvik [10LC002]

MACKENZIE RIVER (EAST CHANNEL) AT INUVIK (10LC002)



Mackenzie River (Peel Channel) above Aklavik [10MC003]

MACKENZIE RIVER (PEEL CHANNEL) ABOVE AKLAVIK (10MC003)

