



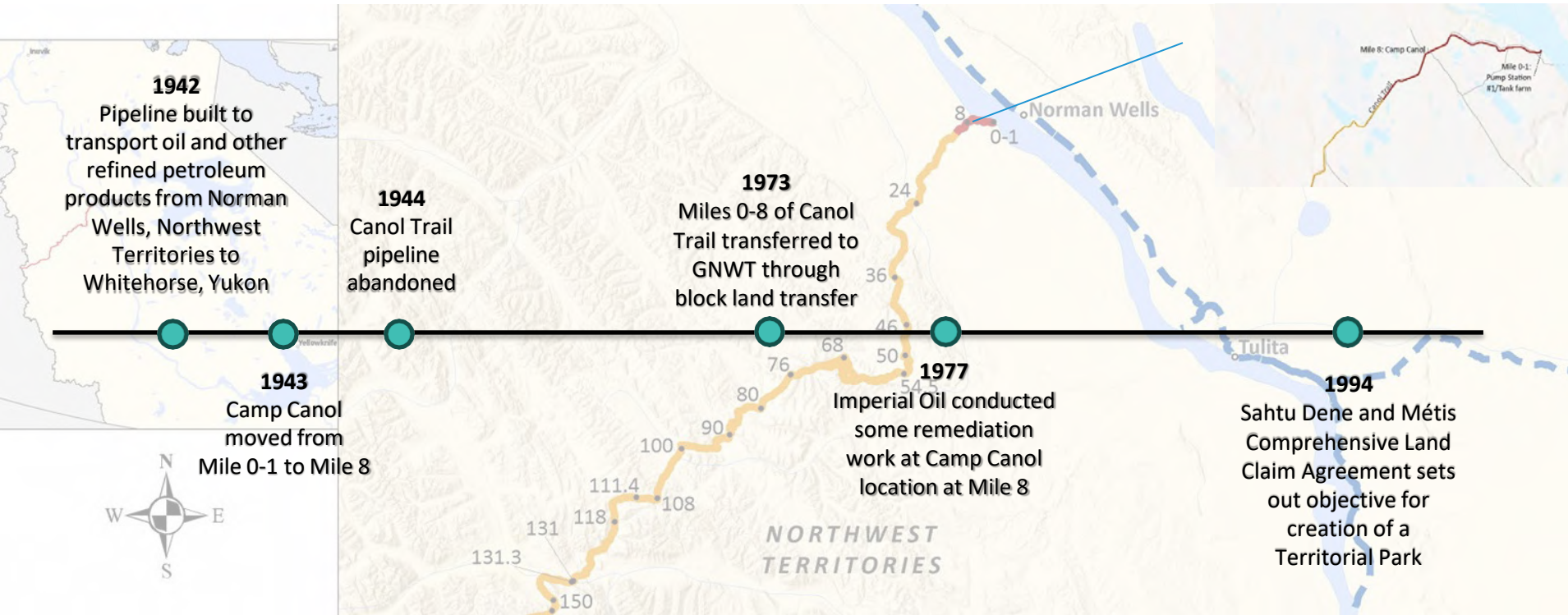
Canol Trail Miles 0-8 Project

Norman Wells and Tulita
2025

Agenda

- Background:
 - Site History
 - Objectives
 - Scope of Work – current status
- Completed Work:
 - Archaeological Assessment work
 - Phase I/II, III Environmental Site Assessments, Supplemental Phase III ESAs
 - Human Health and Ecological Risk Assessments
 - Signage
- Next Steps
 - Closure Objectives
 - Community Information Sessions
 - Remedial Options Analysis, and Remediation and Risk Management Plan

Background: Site History



Background: Objectives

Project Objectives

- To implement a remediation approach that is supported by key stakeholders while also reducing risks to trail users and being fiscally responsible; and
- To remediate the site to an acceptable level to support the creation of a territorial park.

Engagement Objectives

- To share information on project progress;
- To collect feedback through engagement sessions; and
- Clearly communicate our processes for the project.

Background: Current Status

Archaeology
Work

Environmental
Site
Assessments

Human Health
and Ecological
Risk Assessment

Closure Objectives

ROA

R/RM Plan

R/RM Work

Monitoring

Key Takeaways

Summary of archaeology work:

- AOA identified potential precontact and historic areas and recommended an AIA
- The archaeology workshop was helpful in understanding how the trail was used in the past and present
- The AIA confirmed and documented the precontact and historic areas
- Artifacts were catalogued and sent to the PWNHC
- Dependent on the location of any planned remediation work, the Territorial Archaeologists provided recommendations for additional archaeological work

Archaeology Work



Interior of Nose Hanger at Mile 8

Artifacts Found at Mile Sites



Photo 1: Pepsi-Cola Can

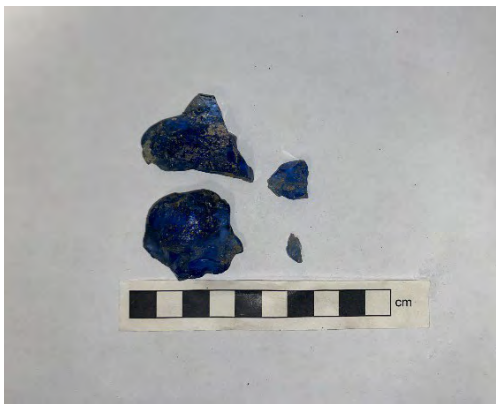


Photo 2: Blue Glass Shards



Photo 3: Clear Glass Piece



Photo 4: Nails



Photo 5: Brass Plate

Historical Features found at Mile Sites



Photo 1: Utilidor at Mile 0-1



Photo 2: Snowplow at Mile 0-1



Photo 3: Barrel Stove at Mile 0-1



Photo 4: Truck 1 at Mile 8



Photo 5: Truck 2 at Mile 8



Photo 6: Stove at Mile 8

Key Historical Buildings at Mile 0-1



Photo 1. Bathhouse



Photo 2. 4-Seater Outhouse



Photo 3. Pumphouse



Photo 4. Barges



Photo 5. Shed



Photo 6. Outhouse

Key Historical Buildings at Mile 8



Photo 1: Garage Foundation



Photo 2: Collapsed Building



Photo 3: Horse Stable Building



Photo 4: Quonset huts



Photo 5: Shed



Photo 6: Nose Hangers

Completed Work

Environmental Site Assessments

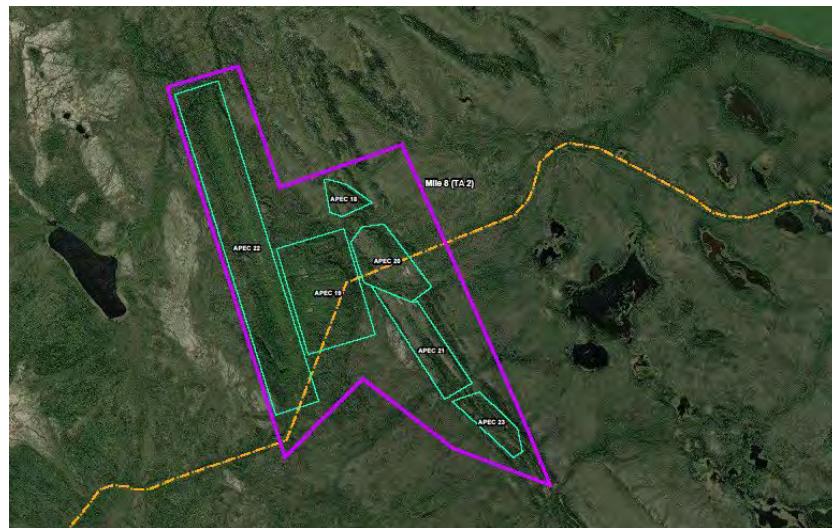
Phase I ESA (2017)

Findings:

- The Phase I ESA **identified** 17 APECs at Mile 0-1 and 6 APECs at Mile 8.



Location of APECs at Mile 0-1



Location of APECs at Mile 8

Completed Work

Environmental Site Assessments

Phase II ESA (2017)

Findings:

- The following contaminants were confirmed at several locations:

- Fuel/oil;
- Metals;
- Asbestos and lead paint found in some building materials; and
- Surface debris including drums, abandoned vehicles, scrap metal, and abandoned buildings.



Barrels

Key Takeaways

Phase III ESA (2020 and 2025)

- Most areas of concern have not been delineated, but data gathered from the ESAs is sufficient to determine the risk to people and the environment.
- There is good plant health at most Areas of (Potential) Environmental Concern (AECs).
- Site waterbodies do not naturally support aquatic life, therefore there are no aquatic life-related risks.
- A drone program identified:
 - Magnetic areas that match locations of where buildings and surficial debris were observed;
 - Three areas at Mile 0-1 and two areas at Mile 8 showed magnetic responses but could not be attributed to existing buildings or surface debris; and
 - No areas of buried debris were noted at Canol Lake.

Environmental Site Assessments

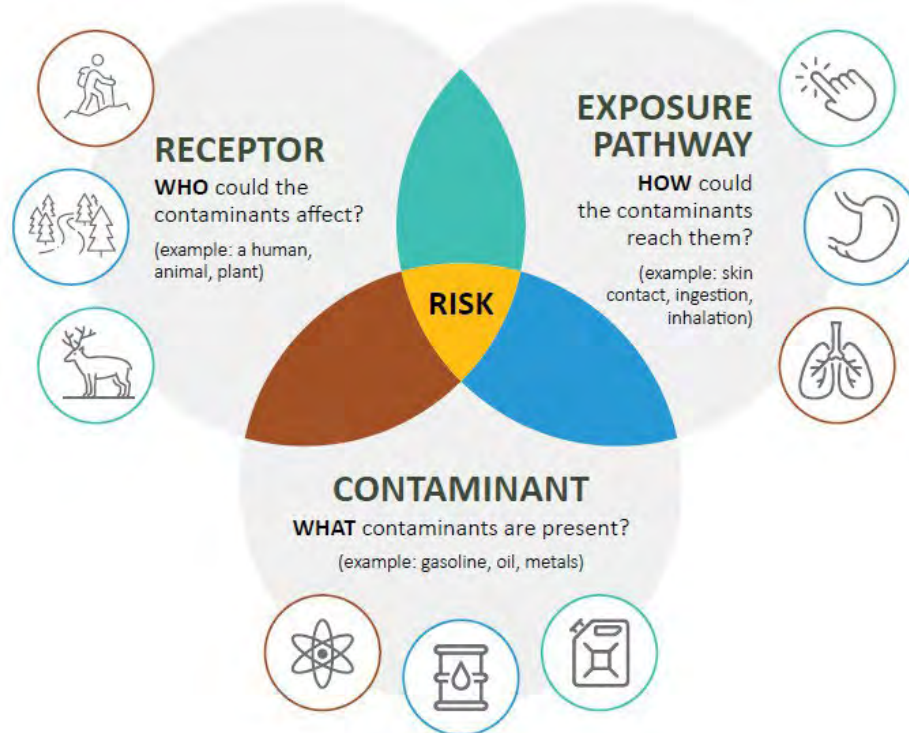


Soil sampling near barrel

Completed Work

Human Health and Eco Risk Assessment

Human Health and Ecological Risk Assessment (HHERA)



Completed Work

Human Health and Eco Risk Assessment

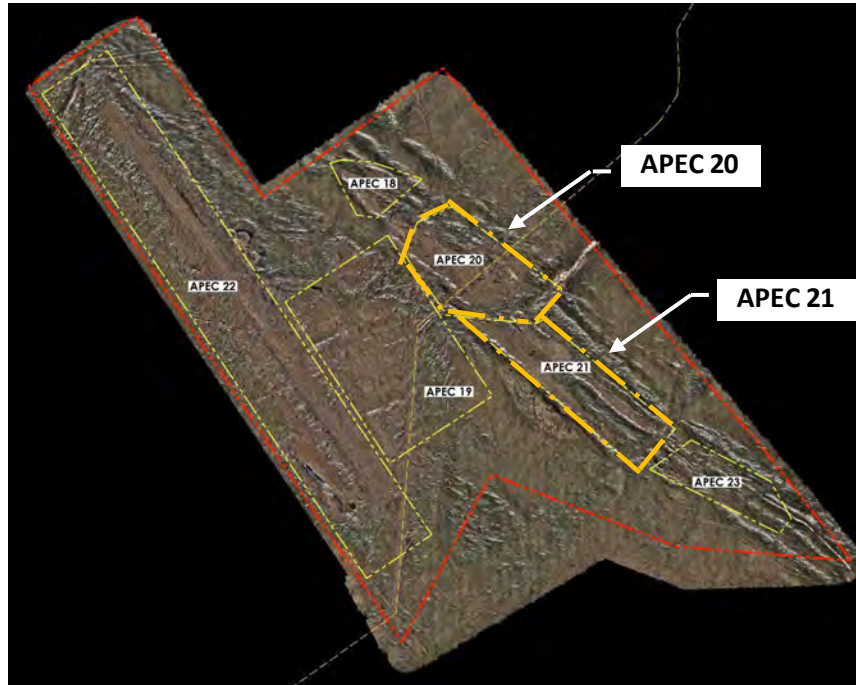
Miles 0-1 and Mile 8 of the Canol Trail



Completed Work

Human Health and Eco Risk Assessment

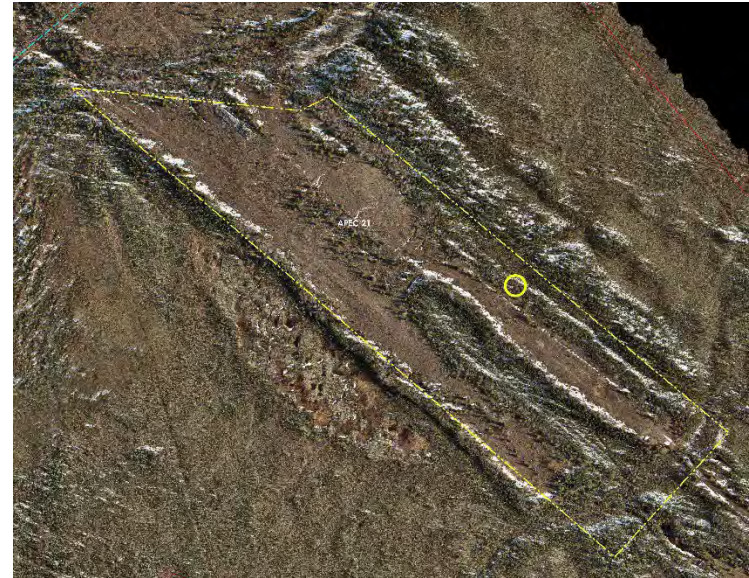
Areas of lead contaminated soil in at Mile 8 in APEC 20 (camp area 1) and APEC 21 (camp area 2)



Completed Work

Human Health and Eco Risk Assessment

Areas of lead contaminated soil in APEC 20 (camp area 1) and APEC 21 (camp area 2)



Key Takeaways

Human Health and Eco Risk Assessment

HHERA (2020 and 2024)

Findings - Human Health:

- Human health risks from contaminants were low, with the exception of four areas of lead contaminated soil at Mile 8.
- Areas of lead contaminated soil pose a risk to the health of trail users that come in contact with the soil. These areas should be remediated or managed.

Findings - Ecological Health:

- Ecological health risks from contaminants were low and no remedial or management actions are required.

Exposure Pathway Identified in the HHERA



Completed Work - Signage Installation

Signage Installation

- Completed in October 2023.
- Installation of signs at Mile 0-1, 8 and on existing structures.



Installing signage on building at Mile 8

Project Summary: Work

Archaeology
Work

Environmental
Site
Assessments

Human Health
and Ecological
Risk Assessment

Closure Objectives

ROA

R/RM Plan

R/RM Work

Monitoring

Current Stage

Closure Objectives

Closure Objectives

1. Reduce Risks to Humans and the Environment
2. Enable Traditional and Future Land Use
3. Achieve and Maintain Regulatory Compliance
4. Preserve Heritage (Indigenous and Canol)
5. Manage, Reduce or Eliminate Long-Term Risk and Liability
6. Optimize Indigenous and northern participation
7. Cost Effectiveness

Next Steps



FY2025/2026	Future
Remedial Options Analysis & Remediation/Risk Management Plan	Remediation/Risk Management Activities

GNWT to develop remedial options based on results of ESAs and HHERA

R/RM field program ★

Engagement on the ROA

Develop R/RM Plan ★

Long term monitoring(?)...

Thank you



For more information, please contact:

Myra Berrub

Senior Project Manager, Contaminated Sites
Environment & Climate Change

Email: Myra_Berrub@gov.nt.ca

Phone: (867) 767-9236 ext. 53187

Jennifer Spencer-Hazenberg

Manager, Contaminated Sites
Environment & Climate Change

Email: Jennifer_Spencer-Hazenberg@gov.nt.ca

Phone: (867) 767-9236 ext. 53180