

March 27, 2026

Via email

Pete Cott
Manager, Habitat and Environmental Assessment
Wildlife Management Division
GNWT- Environment and Climate Change
Yellowknife, NT

Jennifer Carpenter
Superintendent, Nahanni National Park Reserve
10005-100 St, PO Box 348, Fort Simpson NT X0E 0N0

Re: Canadian Zinc - Phase 1 (Winter Road Post Construction) Wildlife Management and Monitoring Plan 2025 Annual Report, Prairie Creek, Northwest Territories

Please find attached the Phase 1 Wildlife Management and Monitoring Plan 2025 Annual Report (WMMP Annual Report). This WMMP Annual Report is being submitted to address the approved Phase 1 WMMP annual reporting requirement.

In the context of the public review process of the [2024 Annual Report](#), Canadian Zinc (CZN) responded to a comment(s) from Environment and Climate Change Canada (see comments 1 and 2) indicating that the bird monitoring dataset would be re-analyzed to incorporate the latest results into the next Annual Report as well as provide further details about the methods and assumptions made in the power analysis as it relates to the bird dataset. However, it is not possible to have this information ready for inclusion in the 2025 Annual Report. This is due in part to the fact that the organization doing the analysis does/did not have availability to begin processing the data until this year, March 2026. Therefore, CZN proposes that the additional information as committed to in the responses to comments on the 2024 Annual Report be included within the 2026 (or next years) annual reporting.

If you have any further questions, please do not hesitate to contact myself or Claudine Lee, VP Corporate Social Responsibility at claudine.lee@norzinc.com.

Sincerely,



Lynn Boettger
Permitting Manager

Cc
Greg Look, GNWT-ECC
Audrey Steedman, Parks Canada

Attachment

Prairie Creek Mine All Season Road Phase 1 Post Construction

Wildlife Management & Monitoring Plan

2025 Annual Report

March 2026



Table of Contents

List of Abbreviations	3
1.0 Introduction and Background	4
1.1 Phase 1 Winter Road.....	5
1.2 Activities in 2025.....	6
1.3 Annual Report Structure	6
2.0 Reporting.....	8

Appendix A - Overview Mapping

Appendix B - Wildlife Observation Logs

Note: *All photographs within this report provided courtesy of A. Howton, 2025; not to be used or copied without permission.*

List of Abbreviations

ASR	All Season Road
AVC	Animal Vehicle Collision
ARU	Acoustic Recording Unit
CZN	Canadian Zinc Corp.
DFN	Dehcho First Nations
DM	Dene Monitor
ECCC	Environment and Climate Change Canada
ENR/ECC	Environment and Natural Resources <i>Note: ENR is currently ECC or Environment and Climate Change. There will be some references to ENR in this Annual Report when referring to past approvals or similar.</i>
KM	Kilometre Marker
LKFN	Łíídlı́ Kúé First Nation
m	Metres
NDDB	Nah?a Dehé Dene Band
NNPR	Nahanni National Park Reserve
WR	Phase 1 Winter Road <i>Note: The acronym for the Phase 1 Winter Road has also been presented in various documents as PWR and there are some references that use this acronym when referring to past approvals or similar within this Annual Report.</i>
QEP	Qualified Environmental Professional
REA	Report of Environmental Assessment
ROC	Road Oversight Committee
WMMP	Wildlife Management and Monitoring Plan

1.0 Introduction and Background

Canadian Zinc Corporation (CZN) is planning to operate the Prairie Creek Mine (the Mine) located at approximately 61° 33' north latitude and 124° 48' west longitude adjacent to Prairie Creek, a tributary of the South Nahanni River, in the southwest corner of the Northwest Territories (see Appendix A for Overview Map). The Mine is 100% owned by CZN, a wholly owned subsidiary of NorZinc Ltd.

To access the Mine, a 170 kilometre All Season Road (ASR) is necessary to support the transport of concentrate produced at the Mine as well as the delivery of operating supplies to the Mine. The ASR will connect the Mine to the Liard Highway via a 10 kilometre section of the already established Nahanni Butte Access Road.

The ASR route spans three land tenure jurisdictions: Territorial (non-Federal) lands, federal Indian Affairs Branch Lands, and Parks Canada for the portion of the ASR located in the Nahanni National Park Reserve (NNPR). The ASR route passes through a variety of terrain from low-lying floodplains, mountain foothills, river valleys, plateaus, mountainous stream valleys, and mountain passes. The road geometry is intended to support a haul speed of 40 kilometres per hour where terrain conditions permit. In general, the ASR will have a 5-metre wide running surface (wider at curves, turns and pullouts) and the right-of-way will be cleared 15-30 metres depending on conditions along the alignment. Camps are currently anticipated to be required at multiple locations along the route during construction. Fuel will be stored in suitable tanks with containments proximal to construction locations. The route crosses the Liard River near Nahanni Butte and will utilize a conventional barge during non-winter operations and an ice bridge during winter operations.

The ASR will be built in two phases. Phase 1¹ consisted of the construction of a temporary road (Phase 1 Winter Road (WR); the Project), that was intended to provide seasonal access, for one winter, to complete geotechnical and geophysical investigations for Phase 2. Phase 2² includes all activities to support the construction of the ASR including the construction and operation of winter roads and ASR construction.

The Phase 1 Wildlife Management and Monitoring Plan (WMMP; the Plan) was prepared for CZN by Tetra Tech Canada Inc. (Tetra Tech) in 2022. This management plan outlined the mitigation, monitoring, and adaptive management responses that were to be employed during Phase 1 construction of the Prairie Creek Winter Road (WR). Under the *NWT Wildlife Act* and the

¹ Defined in the authorizations as “Phase 1 – activities to support the Construction of the All Season Road in Phase 2, including the Construction and operation of the Winter Road to conduct Geotechnical Investigation and transport equipment and materials to Prairie Creek Mine.”

² Phase 2 is defined in the Project authorizations as “the activities to support the Construction of the All Season Road including the Construction and operation of the Winter Road and All Season Road Construction.”

Canadian National Parks Act, the Plan is binding and enforceable, once approved by the Minister of Environment and Natural Resources (ENR) and Parks Canada Agency (Parks Canada), respectively. The Plan was approved by ENR on October 14, 2022 ([Version 5](#)) and by Parks Canada on October 31, 2022 ([Version 6](#)). There is currently not an approved version of a WMMP for Phase 2 (Construction) of the ASR.

1.1 Phase 1 Winter Road

Construction of Phase 1 was completed in the winter season of 2022/2023. Phase 1 included a mulched trail followed by typical and non-typical winter road construction. It is important to note that the WR was constructed differently than originally planned. There was very limited access beyond the Grainger Gap area, the WR was only connected for a short period (approximately one month) before deactivation began, and only one camp was built (which was located at Kilometre Marker (KM) 178). Phase 1 has since been deactivated.



1.2 Activities in 2025

In 2025, post-construction monitoring continued as per the authorizations, approved Phase 1 management plans, and deactivation plan(s). No construction activities occurred; Phase 2, Construction of the ASR, was not started.

1.3 Annual Report Structure

To satisfy the reporting requirements outlined within the Phase 1 WMMP, an Annual Report must be provided to regulators and local Indigenous groups to solicit review of the effectiveness of mitigation measures and, following discussion in Road Oversight Committee (ROC) meetings, to suggest modifications to mitigation and monitoring plans, as necessary. This report is intended to fulfill CZN's Annual Reporting requirements for the WR (Section 10.0, Item 5 of WMMP). It is inclusive of the timeframe from January 1, 2025 to December 31, 2025. This is hereinafter referred to as the "reporting period".

The following reporting requirements from Section 10.0 (Reporting), Item 5 (Annual Report) of the Prairie Creek All Season Road: Phase 1 Winter Road Wildlife Management and Monitoring Plan (October 2022) stipulate that the Annual report will be provided to Parks Canada, ECC, ECCC, Nah?a Dehé Dene Band (NDDDB), Łíídlıı Kúé First Nation (LKFN), and Dene First Nation (DFN). The annual report is to include, but is not limited to:

- a) Project review including the footprint spatial data, post-construction of the WR (refer to Section 7.3 of the Phase 1 WMMP).
- b) Issues of non-compliance, wildlife incidences, and mortalities (including wildlife collisions involving project-related vehicles on the WR and NWT highways).
- c) Mitigations implemented including locations of wildlife caution zone signage to inform more permanent management options.
- d) Summary of activities conducted under, and results of, the monitoring programs including action level exceedances and adaptive management response to inform subsequent Project phases.
- e) Effectiveness of mitigation and adaptive management, as well as any unforeseen issues and applicable advice from regulators, any changes implemented, and how Dene Knowledge informed these changes.
- f) Updated species observation maps and models. Updates to the grizzly den habitat suitability model (as required) based on the habitat characteristics at newly detected dens, as well as maps to include new wildlife trails and observations of caribou, Dall's Sheep, large carnivores (bears, wolverine, wolves), moose, and bison to inform subsequent Project activities.

- g) Approved updates to the WMMP, including the monitoring procedures, those informed by Dene Knowledge, Species at Risk status updates (i.e., Table 2 updates and camp Species at Risk posters), and mitigations (e.g., ENR's Woodland Caribou Best Management Practices for Industrial and Commercial Activities (as applicable)).
- h) Effects monitoring schedule for the next reporting period.
- i) Wildlife Observation Logs in a tabular format that includes coordinates or road KMs for submission to ENR's Wildlife Management Information System and to Parks Canada. Also submit the Wildlife Observation Logs to ENR's Wildlife Management Information System (WMISTeam@gov.nt.ca).
- j) The Wildlife Harvest dataset for submission to Parks Canada.

These requirements of the Annual Report are addressed in the following.



2.0 Reporting

a) Project review including the footprint spatial data, post-construction of the WR (refer to Section 7.3 of the Phase 1 WMMP).

As mentioned, no construction activities occurred within the reporting period. Post-construction monitoring occurred in line with the conditions of permits, the approved management plans and/or similar. CZN staff followed the approved management plan(s), project authorization conditions, restricted access permit conditions (required within the NNPR), and general best practices when conducting post construction monitoring. This includes adhering to such conditions as no littering, no approaching or feeding wildlife, and responsible use of the helicopter.

There were three programs related to wildlife effects monitoring conducted in the reporting period. These programs were the deployment/retrieval of bird recorders (May and October 2025), bat habitat surveys and deployment of passive recording devices (June), and a Dall's sheep lambing survey (May 2025). These programs are discussed further under section "d" below. Also, incidental wildlife sightings were recorded (for both the ASR and the mine site) and this information can be found in Appendix B.

b) Issues of non-compliance, wildlife incidences, and mortalities (including wildlife collisions involving project-related vehicles on the PWR and NWT highways).

There were no issues of non-compliance, wildlife incidences, and mortalities to report. The exception to this being the natural mortality of a caribou that had been previously collared. This natural mortality is discussed further under section "d".

c) Mitigations implemented including locations of wildlife caution zone signage to inform more permanent management options.

Since no construction activities occurred, there were no new mitigation measures implemented in the reporting period. Mitigation measures that have already been implemented were reported on previously for the Phase 1 WR. For reference, this list can be found in Appendix B of the [2023 Phase 1 Annual Wildlife Management and Monitoring Report](#).

d) Summary of activities conducted under, and results of, the monitoring programs including action level exceedances and adaptive management response to inform subsequent Project phases.

Bird Acoustic Monitoring

The objective of the Bird Acoustic Monitoring program is to identify changes to the bird community and to select bird species along the road alignment over time. As planned in the WMMP, Autonomous Recording Units (ARUs) were installed after WR construction to monitor the bird community and select bird species. In the reporting period:

- The retrieval of 9 of the 11 ARUs not recovered in 2024 took place in May of 2025. The two unrecovered units could not be accessed due to vegetation growth on the associated landing sites (note that an attempt to retrieve these two may take place in 2026).
- 38 ARUs were redeployed from May 18th to May 23rd along the road alignment (between approximately KM 4 and KM 143). The 38 ARUs deployed in May 2025 were retrieved between August 29th and October 3rd.
- Analysis of the 9 recovered 2024 ARUs will take place along with the 38 units deployed in 2025. Please see the covering letter to this report for further information on ARU analysis.

Dall's Sheep Lambing Survey

In May of 2025, CZN staff conducted a Dall's sheep lambing site survey proximal to the Prairie Creek Mine airstrip and access road. The objective of the survey was to identify Dall's sheep lambing sites in the vicinity of the airstrip and aircraft approach zone. During the lambing period, the cliffs adjacent to the airstrip and along the approximately 8 km of the aircraft approach zones were surveyed for sheep using binoculars and a spotting scope on three occasions.

On May 17th, CZN's observer recorded two groups comprising six rams and two juveniles, with no ewes or lambs present. By May 25th, the composition shifted to include three ewes, nine juveniles, and three rams across four groups with lambs notably absent. The June 1st survey marked the first detection of lambs, documenting five groups in total: four ewes, two lambs, ten juveniles, and four rams. Among these were a nursery group and a lone ewe with her lamb, both located approximately 5 km from the end of the runway.

Information and further analysis from these surveys will be used to inform targeted mitigation strategies to minimize potential disturbances during future activities.



Bat Habitat Surveys

Research priorities focused on the deployment of passive acoustic detectors with capture surveys occurring opportunistically. The purpose of this work was to identify and document areas of concern for over-wintering hibernacula and summer maternity roosts for bats that may be impacted by the development of the ASR. Field work occurred around the solstice (June) when high light levels were not conducive to bat captures. The stationary acoustic monitors are being used to assess areas of high habitat potential and confirm areas of special concern.

Currently, no results are available to report. No animals were handled during the work in 2025. The acoustic recording devices that were deployed in 2025 are planned to be retrieved in the summer of 2026 and then sent for analysis. Work to further assess bat species presence is expected to continue into the future.

Caribou

Parks has completed some caribou survey work and we are continuing to engage and share information. ECC deployed 10 Boreal caribou collars in 2025. There was one caribou mortality reported which is further described below.

CARIBOU MORTALITIES

Boreal caribou live collar data is delivered directly from Telonics (the collar manufacturer) to ECC, whereas the mountain caribou collar data is provided via the Movebank data repository, operated by Tetra Tech and shared directly with ECC, Parks Canada, and CZN. Table 1 summarizes the mortality flags received in 2025. ECC may have received additional mortality flags from the collared boreal caribou.

Table 1 - Caribou Mortality Summary

Date of Mortality Flag	Ecotype	Date of Collar Retrieval	Mortality investigation results	Investigation Status
November 18, 2025	Mountain	Not applicable	Occurred approximately 20 km north KP 7 in the caribou flats area. Collar retrieval and the mortality investigation have not yet been completed.	Open – a helicopter will be needed to complete the mortality investigation and retrieve the collar.

e) Effectiveness of mitigation and adaptative management, as well as any unforeseen issues and applicable advice from regulators, any changes implemented, and how Dene Knowledge informed these changes.

Construction activities did not occur during the reporting period, resulting in no changes to the project footprint or risks to wildlife and their habitats (e.g., no risk of spills, harm, or disturbance to wildlife or their residences). Similarly, access remained unchanged due to the deactivated Phase 1 WR.

Post-construction monitoring was conducted according to the conditions of permits, approved management plans, and general best practices. Staff adhered to guidelines, including no littering, no approaching or feeding wildlife, and responsible helicopter use during monitoring activities.

Since staff diligently followed the approved management plans and project authorization conditions, no unforeseen issues arose. As a result, no additional advice from regulators or from Dene Knowledge was necessary during this reporting period.

- f) Updated species observation maps and models, including the grizzly bear den habitat suitability model (as required).**

The incorporation of new wildlife observations into the wildlife mapping is ongoing. The latest version of the mapping was provided in the draft Phase 2 WMMP.

- g) Maps with new wildlife trails and observations of caribou, Dall's sheep, large carnivores (bears, wolverine, wolves), moose, and bison to inform subsequent Project activities.**

See the comments under section f above.



- h) Approved updates to the WMMP.**

Updates to the approved WMMP were not required during the reporting period.

i) Effects monitoring schedule for the next reporting period.

For Phase 2³, CZN proposes to build the ASR in three years which would see construction occur during three winter and two summer seasons. The ASR is expected to be operational for 15 years (to coincide with the projected Prairie Creek mine life), followed by 2 to 3 years of reclamation.

The current project schedule is reflective of what was presented in the Environmental Assessment information package submitted to regulators in 2019⁴. The exact start of Phase 2 is not known as it will be dependent upon having all the required regulatory approvals in place as well as project funding and resourcing determined. Further details on scheduling will be known once the feasibility study has been updated and reviewed. The exact end to Phase 2 is not known either as it depends on the start date of the construction. However, a reasonable expectation would be that work to progress Phase 2 continues in 2026 with ASR Construction occurring during the calendar years of 2027-2029. The ASR route is planned to be advanced via sections, starting at each end (the Mine and KM 170), and working towards a connecting location. Phase 3 (Operations) will occur following construction.

It is anticipated that wildlife baseline and effects monitoring will continue in preparation for the start of Phase 2 (Construction of the ASR). This includes the deployment/retrieval/analysis of bird ARUs, western toad breeding pond, pika, bats and cave baseline, and den and nest surveys, as well as the continued collection of mountain and boreal caribou collar data. Parks Canada is also undertaking wolverine, grizzly bear, and Dall's sheep surveys in advance of Phase 2 construction.

The next annual reporting period is anticipated either under the approved Phase 1 WMMP, which will comprise no new construction activities similar to this reporting period, or under Phase 2 WMMP depending on the Project schedule described above. The Phase 2 WMMP integrates several changes based on lessons learned during Phase 1. Examples of these adaptations include:

- Implementing snow storage solutions outside the pika exclusion area and improving the visibility of exclusion zone markers.
- Based on input from Parks Canada and results of the northern mountain caribou collaring program, it was determined that a pellet count survey program was not necessary.
- Based on input from Parks Canada and ECC, the winter track survey program was replaced with a boreal caribou collar program.

³ Defined in the authorizations as “**Phase 2** – activities to support the Construction of the All Season Road including the Construction and operation of the Winter Road and of All Season Road Construction.”

⁴ See any of the authorizations on the MVLWB online public registry for the document titled “POST EA INFORMATION PACKAGE INCLUDING AN UPDATED PROJECT DESCRIPTION ALL SEASON ROAD TO PRAIRIE CREEK MINE” (2019 Post EA Information Package) dated February 2019.

j) Wildlife Observation Logs in a tabular format.

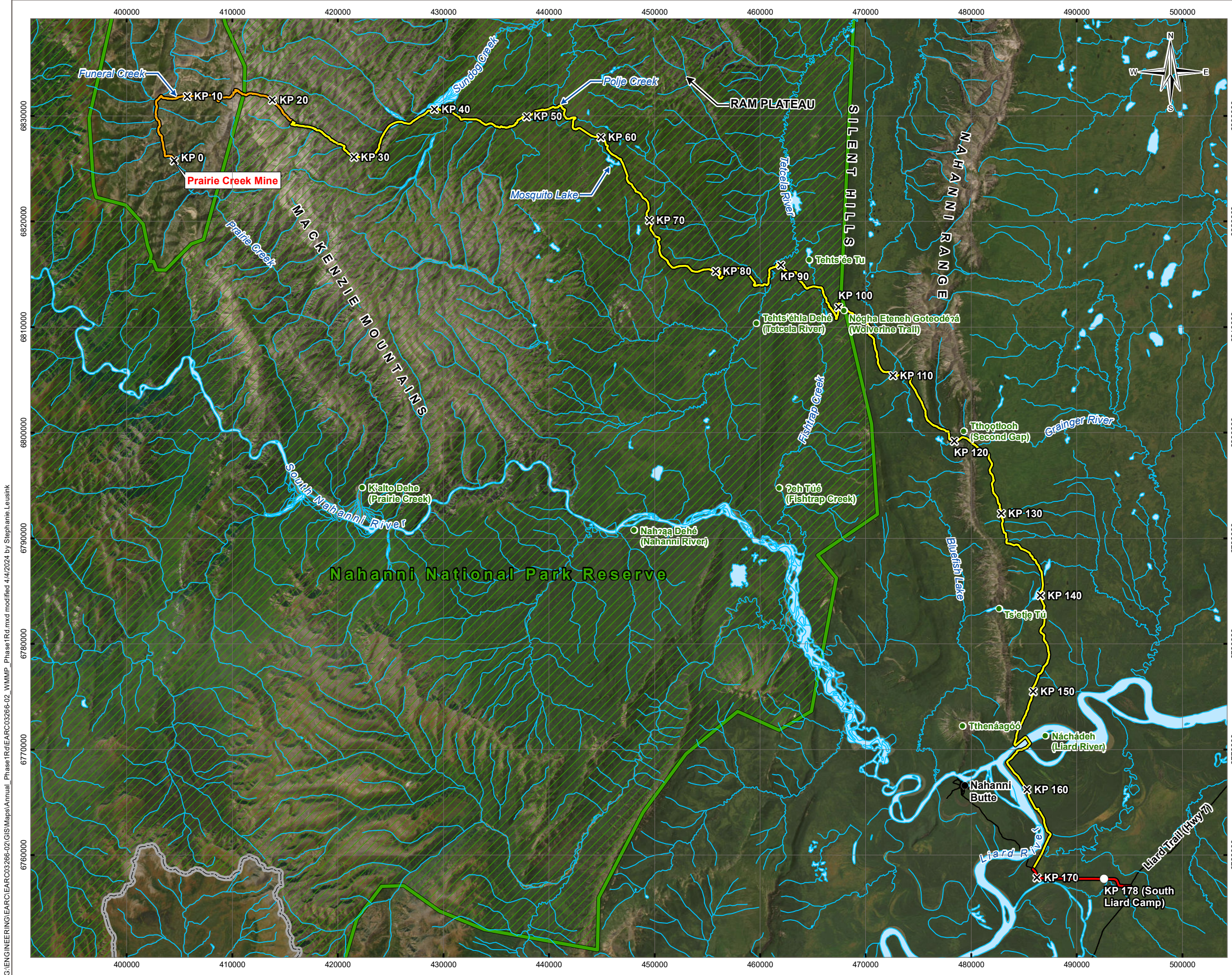
See Appendix B for this information.

k) The Wildlife Harvest dataset for submission to Parks Canada.

Given that the Phase 1 WR was deactivated and there were no Phase 2 activities in 2025, the checkpoint station did not operate to collect wildlife harvest data.



Appendix A - Overview Mapping



LEGEND

- Proposed Camp Location
- ✕ Kilometre Marker
- Proposed Winter Road (Phase 1)
- Existing Mine Access Road to be used for Winter Road (Phase 1)
- Existing Nahanni Butte Access Road to be used for Winter Road (Phase 1)

Base Data

- Community
- Traditional Location
- Existing Road
- Watercourse
- Waterbody
- ▭ Nahanni National Park Reserve Boundary
- ▭ Yukon / NWT Border

NOTES
 Base data source:
 2019 Kilometre Marker and 2021 Winter Road alignment from AllNorth.
 Existing roads from CanVec (1:50,000)
 Watercourses from CanVec (1:250,000)
 Imagery from ESRI, Maxar

STATUS
 ISSUED FOR REVIEW

PRAIRIE CREEK MINE ALL SEASON ROAD PHASE 1

Overview Map

PROJECTION UTM Zone 10	DATUM NAD83	CLIENT
Scale: 1:350,000 		
FILE NO. EARC03266-02_WMMP_Phase1Rd.mxd		
OFFICE TL-VANC	DWN SL	CKD YL
DATE April 4, 2024	APVD RH	REV 0
PROJECT NO. ENG.EARC03145-03		

G:\ENGINEERING\EARC03266-02\GIS\Maps\Annual_Phase1Rd\EARC03266-02_WMMP_Phase1Rd.mxd modified 4/4/2024 by Stephanie Leusink

Appendix B - Wildlife Observation Log

Norzinc Wildlife Observation Log (PC and PWR April to Nov 2025)(Note: Sheep are so common in camp that they are usually not noted)

Date	Location	Time	Species	Number	Observer	Type of sighting	Dene Knowledge and/or other notes
4/18/2025	Camp	12:00	Dall Sheep	1	JK	visual	ewe
4/29/2025	Camp	7:47	Red Fox	1	MV	visual	foraging
5/1/2025	Camp	9:00	Dall Sheep	3	AH	visual	ewes or young rams
5/1/2025	Quarry	10:00	Mallard	2	AH	visual	1 male, 1 female in Prairie Creek
5/1/2025	kp3.5	10:10	Ptarmigan	1	AH	visual	
5/3/2025	kp8.5	9:30	Greenwing Teal	5	AH	visual	2 male, 3 female
5/3/2025	kp6.8	9:35	Greenwing Teal	~15	AH	visual	mixed sexes
5/3/2025	kp4.6	9:40	Mallard	2	AH	visual	1 male, 1 female
5/3/2025	kp8.0	16:00	Wolf	2	AH	tracks	pair of wolf tracks
5/3/2025	kp8.0	16:00	Moose	?	AH	scat	several pellet piles
5/6/2025	Weather station to kp6.5	15:00 - 16:00	Greenwing Teal	many	AH	visual	several groups of mixed sex between weather station and kp6.5
5/6/2025	Main Water Storage Pond	15:35	Wigeons and GWT	16	AH	visual	mixed group of wigeons and greenwing teal
5/6/2025	kp7.0	15:15	Dipper	1	AH	visual	foraging in stream
5/6/2025	Camp	17:00	Raven	2	AH	visual	pair circled camp and then left
5/8/2025	Main Water Storage Pond	15:00	Scaup and wigon	40+	AH	visual	mixed species and sexes group
5/8/2025	kp6.5	14:00	Kingfisher	1	AH	visual	
5/8/2025	reagent pad	15:15	Mallard	2	AH	visual	1 male, 1 female
5/8/2025	road to old landfill	15:20	Bluewinged Teal	2	AH	visual	1 male, 1 female
5/12/2025	Camp	11:10	Grizzly	1	KL	visual	
5/13/2025	Airstrip	15:15	Grizzly	1	KL, Mat, AH	visual	bear damaged E-BAM air monitoring system
5/14/2025	Main Water Storage Pond	15:00	Surf Scoter & Redhead	2	AH	visual	1 male Surf Scoter and 1 male Redhead hanging out together May 14 and 15
5/15/2025	kp8.0	14:00	Kingfisher	1	AH	visual	
5/15/2025	Weather station	16:00	Kingfisher	1	AH	visual	
5/15/2025	Main Water Storage Pond	15:00	Scaups & Northern Shovelers	15+	AH	visual	mixed species and sexes group
5/15/2025	Camp	20:00	Grizzly	1	crew	visual	Boar
5/15/2025	Fuel Farm	16:15	Flicker	2	AH	visual	
5/15/2025	everywhere	All day	Robin	Many	AH	visual	Robins all over the place for several days
5/16/2025	Weather Station	-	Porcupine	1	JK	visual	
5/17/2025	PC berm near fuel farm	13:00	Grizzly	1	AH	visual	Boar
5/18/2025	kp97 ponds	9:00	Swan	2	AH	visual	
5/18/2025	kp86.5	13:45	Black Bear	1	AH	visual	On road
5/18/2025	kp5.8	15:15	Kingfisher	1	AH	visual	with small fish in bill
5/18/2025	kp7.0	15:25	Golden Eagle	1	AH	visual	Circling below folded mountain
5/18/2025	reagent pad	17:00	Greenwing Teal & widgeon	2	AH	visual	
5/18/2025	Main Water Storage Pond	All day	scaup	10	AH	visual	
5/18/2025	kp7.5	16:15	Dall Sheep	3	AH	visual	1 mature ram, 2 immature rams
5/18/2025	kp6.2	15:00	Arctic Ground Squirrel	1	AH	visual	Dead on road at bridge
5/20/2025	Fuel Farm	14:30	Grizzly	1	TS	visual	Far side of PC
5/20/2025	kp140	PM	Kestrel	1	AH	visual	
5/20/2025	kp130	PM	Porcupine	2	AH & HO	visual	
5/20/2025	Airborne NW of Nahanni Butte inside of Park	PM	Sandhill Crane	9	AH & HO	visual	Flying in formation, Observed from helicopter
5/21/2025	lower sundog	AM	Golden Eagle	1	AH & HO	visual	
5/21/2025	Camp	13:00	Grizzly	2	Troy & MV	visual	Hunting sheep
5/24/2025	Camp	15:30 & 17:45	Grizzly	2	AH	visual	Hunting sheep
5/25/2025	Camp	13:25	Grizzly	2	Troy	visual	walking south on PC berm
5/25/2025	Weather Station	13:30	Golden Eagle & Kestrel	1 of each	AH & HO	visual	Kestrel harassing eagle
5/25/2025	kp6 fish pond	15:00	Bull Trout	1	AH & HO	visual	
5/25/2025	kp3.5	17:00	Kestrel	3	AH & HO	visual	
5/25/2025	kp2.5	17:30	Spotted Sand Piper	1	AH & HO	visual	
5/26/2025	Camp	7:22	Dall Sheep	2	TS	visual	1 new lamb & ewe
5/27/2025	Camp	12:30	Grizzly	2	TS	visual	on airfield road
5/27/2025	SNP station 3-11	15:00	Grizzly	2	AH & HO	visual	sow and two or three year old cub
5/28/2025	Camp	11:00	Grizzly	2	HO	visual	Large boar and sow
5/28/2025	Camp	16:00	Grizzly	2	AH	visual	Large boar and sow
5/26/2025	kp6.0	13:00	Waxwings	12	AH	visual	
6/1/2025	Camp road to airstrip	10:00	Back Bear	1	JG	visual	
6/1/2025	Camp	10:15	Grizzly	2	AH	visual	Large boar and sow
6/1/2025	kp3.0	15:00	Kingfisher	1	AH	visual	
6/1/2025	kp3.0	15:00	Spotted sandpiper	1	AH	visual	
6/1/2025	kp6 fish ponds	15:30	Hooded Merganser	2	AH	visual	1 male, 1 female
6/1/2025	kp8.0	16:00	Dipper	1	AH	visual	

Date	Location	Time	Species	Number	Observer	Type of sighting	Dene Knowledge and/or other notes
6/3/2025	PC berm	?	Wolf	1	M	visual	
6/3/2025	PC berm	?	Grizzly	2	KL	visual	?
6/8/2025	Airstrip	16:15	Porcupine	1	ST	visual	
6/8/2025	Quarry	14:00	Grizzly	1	JB	visual	Boar
6/10/2025	Camp	All day	Robin	1	ST	visual	Hunting sheep
6/11/2025	Camp	14:00	Grizzly	2	T	visual	
6/13/2025	Camp	7:30	Grizzly	2	JK	visual	
6/19/2025	Camp	7:30	Grizzly	2	AH	visual	
6/20/2025	kp8.0	7:30	Bull Trout	3	KL	visual	
6/21/2025	Camp	10:45	Grizzly	1	T	visual	Hunting sheep
6/21/2025	Camp	10:30	Grizzly	1	T	visual	
6/20/2025	kp8.0	PM	Bull Trout	3	KL	visual	
6/21/2025	kp8.0	AM	Bull Trout	1	ST	visual	
6/21/2025	kp4.0	AM	Golden Eagle	1	ST	visual	
6/22/2025	kp5.0	10:00	Common Merganser	3	AH & ST	visual	1 male, 2 females
6/22/2025	Camp	8:00	Violetgreen Swallows	6	AH	visual	
6/22/2025	Camp	15:00	Golden Eagle	2	AH	visual	
6/23/2025	Camp	4:45	Snowshoe Hare	4	ST	visual	
6/23/2025	Camp	4:30	Grizzly	1	ST	visual	Small bear, 2 to 3 years
6/23/2025	Main Water Storage Pond	5:30	Porcupine	1	ST	visual	
6/24/2025	Camp	9:30	Wolf	1	MV	visual	
6/26/2025	Kitchen/Camp	PM	Violetgreen Swallow	1	AH	visual	Captured in kitchen and released outside
6/27/2025	Camp	14:30 & 17:00	Grizzly	2	AH	visual	Hunting sheep
6/28/2025	kp97 ponds	12:30	Swan	6	AH	visual	3 pairs in three different ponds
6/28/2025	kp64 (lake to the west)	14:00	Moose	4	AH	visual	Swimming in lake
6/29/2025	Camp	16:00	Grizzly	2	AH	visual	Sow and cub hunting sheep
6/30/2025	Camp	10:00	Grizzly	1	AH	visual	Boar
7/1/2025	Camp	4:45	Wolf	1	ST	visual	black wolf
7/2/2025	Camp	9:00	Grizzly	1	AH	visual	
7/2/2025	Camp	23:00	Wolf	1	JK & LH	visual	black wolf sleeping under propane tank
7/13/2025	Airfield	11:30	Caribou	1	T	visual	Standing in PC drinking
7/17/2025	Quarry	9:30	Grizzly	1	AH	visual	Boar (killed sheep previous evening)
7/18/2025	Camp	14:00	Grizzly	1	AH	visual	Swimming in polishing pond
7/18/2025	Camp	18:30	Grizzly	2	AH	visual	Sow and 3 year cub
7/19/2025	Camp	8:15	Grizzly	1	AH	visual	3 year old cub (aggressive)
7/20/2025	Camp	14:00	Grizzly	2	AH	visual	Sow and 3 year cub
7/24/2025	Camp	11:00	Grizzly	1	AH	visual	boar, hunting sheep
7/26/2025	kp89.9	PM	Fish (species ?)	3	AH	visual	3 small (sub 2") fish in Tetcela River
7/26/2025	kp97 ponds	PM	Swan	4	AH	visual	2 pairs
7/29/2025	Main Water Storage Pond	13:30	Swan	2	ST	visual	
7/29/2025	kp7.0	15:00	Grizzly	1	AH	visual	
7/29/2025	kp6.3	15:30	Osprey	1	AH	visual	
7/29/2025	Camp	18:00	Grizzly	1	AH	visual	
7/30/2025	Camp	8:30	Grizzly	2	AH	visual	Sow and 3 year cub hunting sheep
7/30/2025	Camp	10:15	Grizzly	1	AH	visual	Hunting sheep
7/31/2025	Camp	8:00	Grizzly	1	AH	visual	
8/1/2025	Camp	6:00	Grizzly	1	JG	visual	
8/1/2025	Camp	16:00	Grizzly	1	AH	visual	boar hunting sheep
8/2/2025	Airfield	11:50	Kingfisher	1	AH	visual	
8/5/2025	Camp	13:00	Grizzly	1	AH	visual	3 year cub
8/8/2025	Camp	16:00	Nicrophorus Americanus Investigator	1	LH	visual	I don't know who LH is
8/13/2025	Quarry	10:30	Moose	1	ST&Aham.	visual	large and health looking
9/23/2025	reagent pad	13:50	Grizzly	1	Troy	visual	bear on farside of PC
9/23/2025	Camp	14:40	Grizzly	2	Troy	visual	Sow and 3 year cub
9/25/2025	kp4	16:30	Golden Eagle	1	AH	visual	
9/25/2025	kp5.5	17:15	Grizzly	2	AH	visual	Sow and 33 year cub
9/25/2025	weather Station	17:30	Golden Eagle	1	AH	visual	
9/28/2025	bone yard	16:00	Grizzly	1	Troy	visual	
9/28/2025	kp50	15:00	Moose	1	HO	visual	cow
9/28/2025	South of kp89	12:10	Golden Eagle	2	HO	visual	
10/24/2025	kp6.5	14:00	Wolf	~4	AH	Tracks	
10/24/2025	kp8.0	14:15	Martin	1	AH	Tracks	

Date	Location	Time	Species	Number	Observer	Type of sighting	Dene Knowledge and/or other notes
10/29/2025	Camp	AM	Martin	?	AH	Tracks	
10/30/2025	kp5.5 to kp7.0	16:00	Wolf	?	AH	Tracks	
11/2/2025	Camp	All day	Dall Sheep	10	AH	visual	10 sheep including ful curl ram
11/3/2025	Camp	All day	Dall Sheep	10	AH	visual	10 sheep including ful curl ram
11/4/2025	Camp	All day	Dall Sheep	10	AH	visual	10 sheep including ful curl ram
11/5/2025	Camp	All day	Dall Sheep	7	AH	visual	7 sheep including ful curl ram
11/6/2025	Camp	All day	Dall Sheep	2	AH	visual	2 sheep (mature ram)
11/7/2025	Camp	All day	Dall Sheep	3	AH	visual	3 sheep
11/8/2025	Camp	All day	Dall Sheep	3	AH	visual	3 sheep (two mature rams)
11/9/2025	Camp	All day	Dall Sheep	3	AH	visual	3 sheep (1 mature ram)
11/9/2025	Camp	?	Weasel	1	M	visual	
11/11/2025	Camp	AM	Dall Sheep	2	AH	visual	2 mature rams
11/12/2025	Camp	AM	Dall Sheep	5	AH	visual	5 sheep (one mature ram)
11/21/2025	Camp	?	Dall Sheep	2	AH	Tracks	two sets of sheep tracks over night
11/22/2025	Camp	11:00	Raven	1	AH	visual	
11/23/2025	Camp	?	Dall Sheep	1	AH	Tracks	1 set of tracks overnight