

BERRY PICKING

People should avoid picking berries and other wild plants from areas close to the old Giant and Con mines and in any industrial areas. Berries and wild plants should be harvested well away from industrial activities and roadways, as a general principle. It is safe to pick berries from yards in Yellowknife, Ndilo and Dettah, but it's recommended to wash them before eating.

WILD GAME

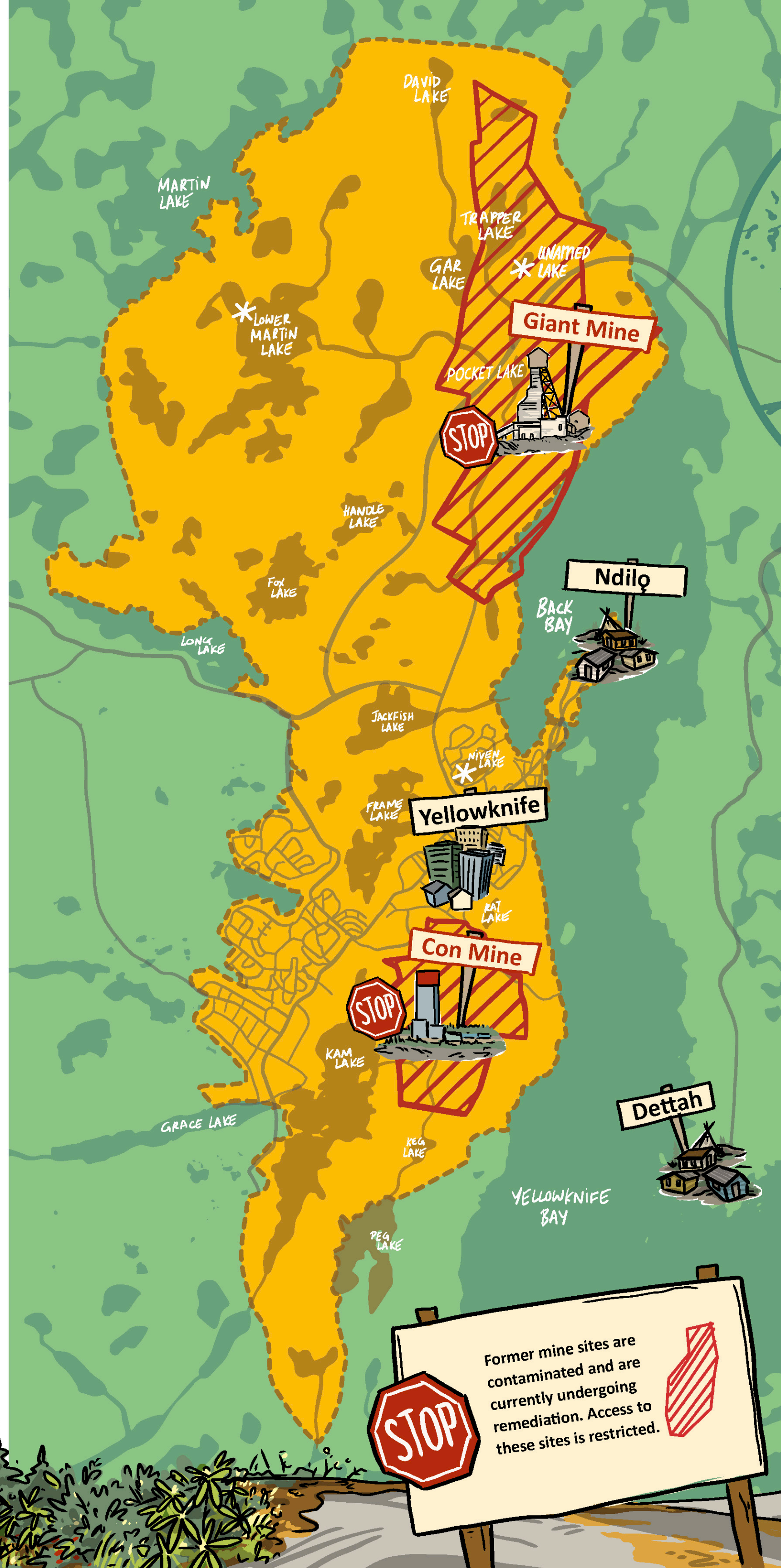
The benefits of consuming country foods are high. The risks from arsenic exposures through eating country foods are low. We recommend that people continue to enjoy country foods in the Yellowknife, Ndilo and Dettah area.

Because game animals and birds do not stay in the same location their entire lives (unlike plants), the levels of arsenic measured are not of concern. Animals harvested throughout the area are safe to eat.

GARDEN VEGETABLES

Growing a vegetable garden is great for your physical and mental health. Previous research has shown that levels of arsenic in Yellowknife area soils are elevated relative to most other places in Canada because of past mining emissions. Levels of arsenic in Yellowknife produce are higher than those measured in the supermarket vegetable survey. While levels of arsenic in Yellowknife grown produce are higher than those measured in store bought products, recent studies say eating produce from Yellowknife gardens is safe. There is a very low risk of cancer associated with eating garden produce grown in Yellowknife.

If you still have concerns about eating produce out of your garden, you can lower the risk further by adding bagged soils. Washing vegetables thoroughly or peeling vegetables will help to remove soil and bacteria.



LAND AND WATER USE

Numerous studies in the region show us where arsenic dust travelled from former mine sites.

LOW RISK LAKES

- Banting Lake
- Walsh Lake
- Vee Lake
- Martin Lake
- Long Lake
- Landing Lake
- Duck Lake
- Mason Lake
- Yellowknife River
- Madeline Lake
- Prelude Lake
- Prosperous Lake

AREA OF CONCERN LAKES

- Kam Lake
- Frame Lake
- Jackfish Lake
- Rat Lake
- Peg Lake
- Meg Lake
- Fox Lake
- Handle Lake
- Gar Lake
- David Lake
- Pocket Lake
- Unnamed lakes near Giant Mine

LOW RISK AREAS

Great Slave Lake, and lakes east of Yellowknife, Ndilo and Dettah have low levels of arsenic.

These areas are safe for all recreational activities: swimming, boating, fishing, camping, hunting,



YES



AREAS OF CONCERN

The areas around the old Giant Mine and Con Mine sites have higher levels of arsenic in water and soils.

- Do not drink water from these lakes in this area. If spending time in the area, remember to bring water from home.
- Avoid swimming, wading, fishing, and harvesting plants.
- Avoid picking berries, except those from home gardens. Wash garden berries before eating.
- You may canoe, hike, and hunt as long as you do not consume water or fish.
- Camp in designated campground.
- Do not enter any fenced areas.



NO



SOIL

Young children may be at more risk if they accidentally swallow soil, so extra care should be taken when spending time outdoors in areas of concern.

NIVEN LAKE:

People should not swim in Niven Lake as it was used as a sewage lagoon many years ago.

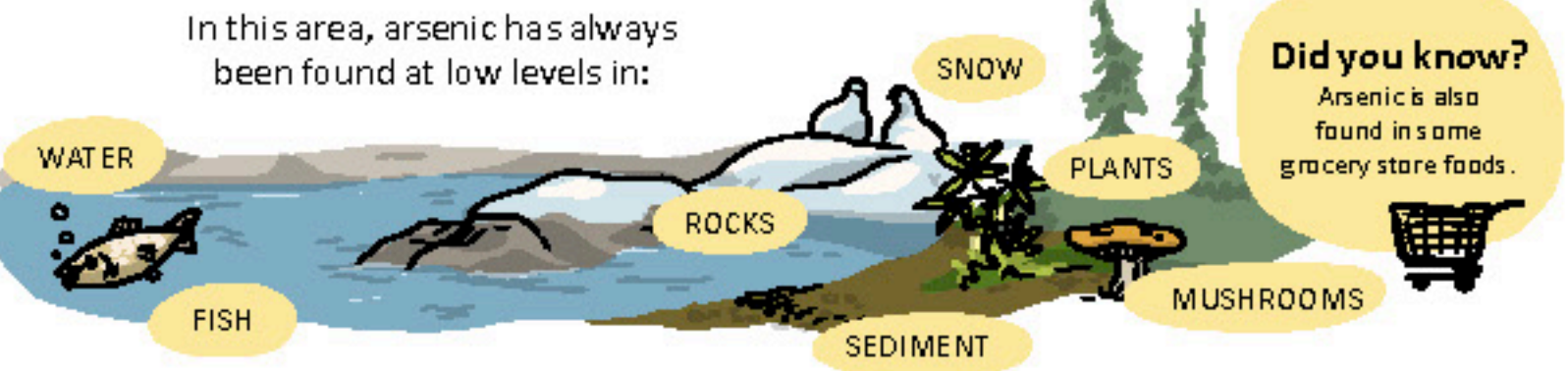
GREAT SLAVE LAKE (BACK BAY AND YELLOWKNIFE BAY):

All types of recreational activities are safe including swimming and wading. It is also safe to fish. Children should not put mud or sediments in their mouths.



WHERE ARSENIC COMES FROM

In the area surrounding Yellowknife, Ndilo and Dettah, there is natural arsenic found in the geological environment.



Did you know?
Arsenic is also found in some grocery store foods.

Arsenic is not from chemicals brought from down south.

Arsenic has always been in the rocks.

Arsenic and gold are often found together.

Arsenic is not hazardous to our health when it is trapped in the rocks.

Giant Mine and Con Mine operated in the Yellowknife area for several decades.

Arsenic was released from the rocks from roasting during mining.

In extracting gold through mining and roasting, arsenic was released from the rocks in a different form called arsenic trioxide and was dispersed as dust into the environment.

In this form arsenic becomes more toxic for humans.

MUSHROOMS

Don't eat mushroom within 10km of Giant/Con Mine.

Mushrooms are different from other plants. They build up varying levels of arsenic based on their distances from the minesite. Outside of the 10km area around the two mines, it is safe to eat mushrooms, except for mushrooms from the Tricholomataceae family including Tricholoma "pine" mushrooms, Clitocybe "common funnel" mushrooms and White Matsutake mushrooms. These mushrooms should not be eaten within 25km of the Giant and Con Mine, however, at distances of 25km and greater it is safe to eat mushrooms as long as mushrooms are properly identified (please see harvesting advice). The same advice applies for chaga mushrooms harvesting in the area.

Here is some advice for first time mushroom pickers:

- First time mushroom pickers should go with an experienced person, especially when planning to eat what is gathered.
- Check the identity of your mushroom with an experienced harvester, buyer or biologist.
- Consult with a reputable mushroom field guide to compare species descriptions and contrast with potentially dangerous and poisonous lookalike species.



DRINKING WATER

It is recommended to not drink untreated water from any lake. Although boiling water can kill harmful germs like viruses, bacteria and parasites (including Giardia, which causes "beaver fever"), boiling does NOT remove arsenic. Special treatment is required to remove arsenic from the water.



CITY WATER

The drinking water in Yellowknife, Ndilo and Dettah is safe. It is routinely tested before it is provided to residents.



For information or advice on water treatment options while out on the land, please contact Environmental Health at environmental_health@gov.nt.ca or at 867-767-9066 ext. 49262.



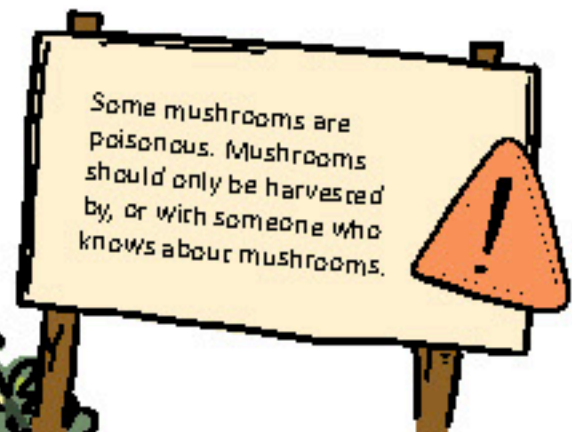
IN YELLOWKNIFE
Within 10km from Giant and Con Mines, mushrooms are not safe to eat.



10-25KM FROM YELLOWKNIFE
Mushrooms are safe to eat except pine mushrooms and common funnel mushrooms.



25KM FROM YELLOWKNIFE
Mushrooms are safe to eat.



Arsenic
Yellowknife, Ndilo & Dettah