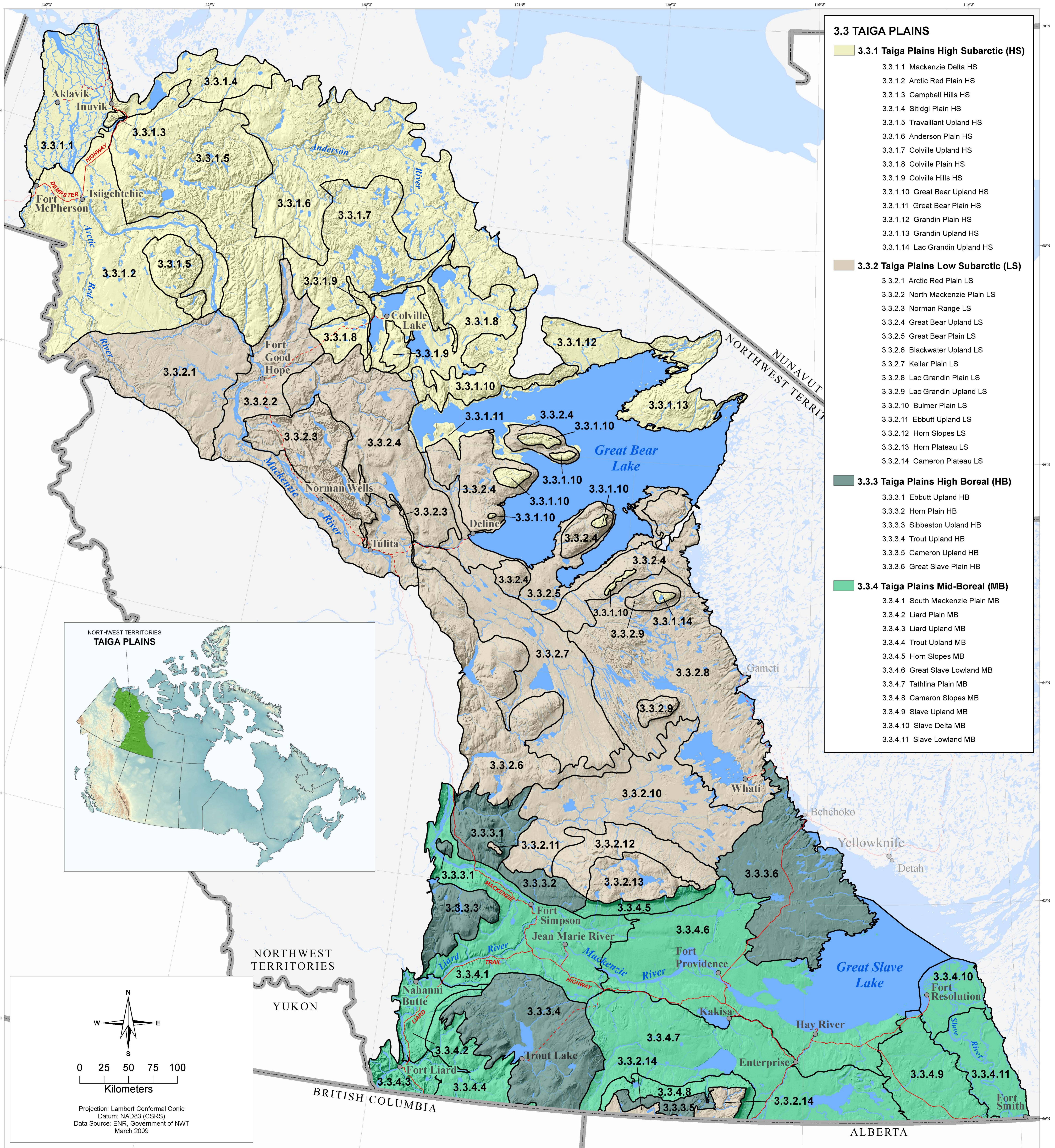


# ECOLOGICAL REGIONS OF THE NORTHWEST TERRITORIES

## TAIGA PLAINS



### 3.3 TAIGA PLAINS

#### 3.3.1 Taiga Plains High Subarctic (HS)

- 3.3.1.1 Mackenzie Delta HS
- 3.3.1.2 Arctic Red Plain HS
- 3.3.1.3 Campbell Hills HS
- 3.3.1.4 Sitidgi Plain HS
- 3.3.1.5 Travailant Upland HS
- 3.3.1.6 Anderson Plain HS
- 3.3.1.7 Colville Upland HS
- 3.3.1.8 Colville Plain HS
- 3.3.1.9 Colville Hills HS
- 3.3.1.10 Great Bear Upland HS
- 3.3.1.11 Great Bear Plain HS
- 3.3.1.12 Grandin Plain HS
- 3.3.1.13 Grandin Upland HS
- 3.3.1.14 Lac Grandin Upland HS

#### 3.3.2 Taiga Plains Low Subarctic (LS)

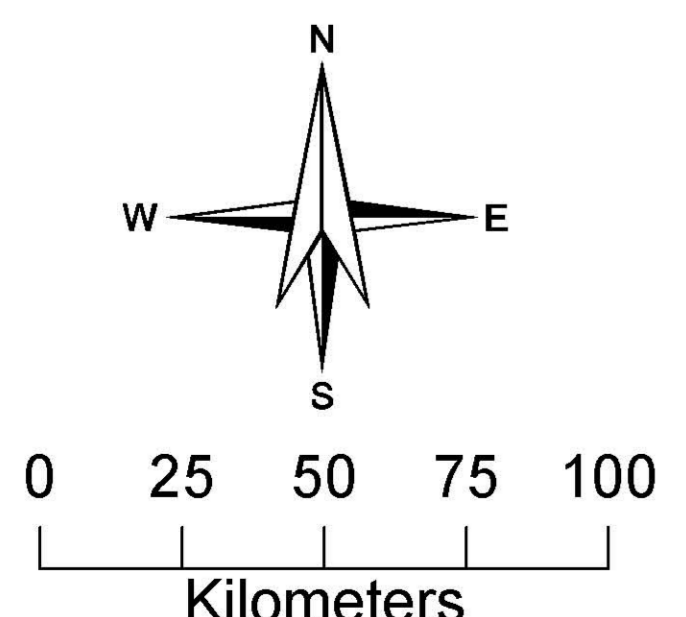
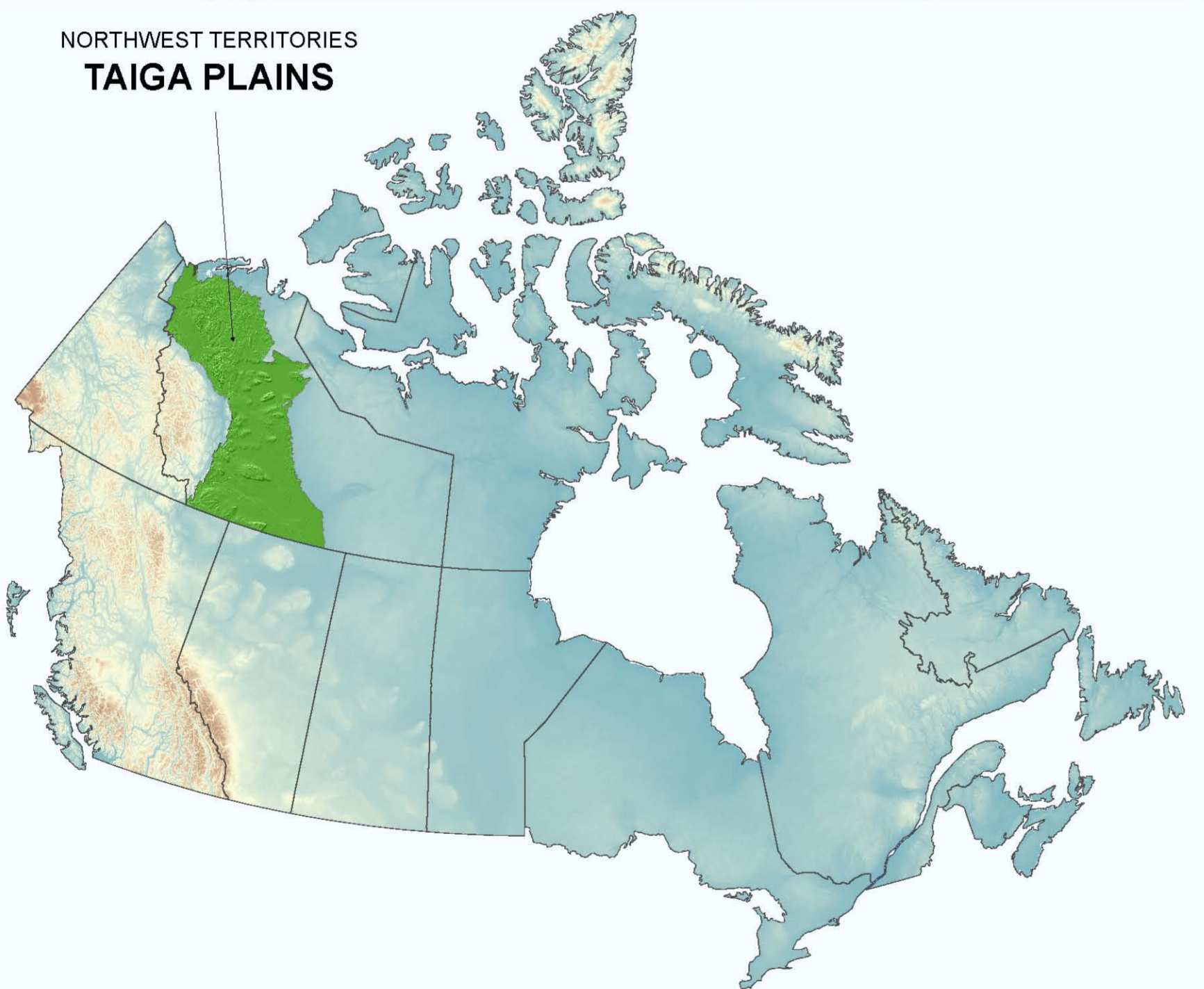
- 3.3.2.1 Arctic Red Plain LS
- 3.3.2.2 North Mackenzie Plain LS
- 3.3.2.3 Norman Range LS
- 3.3.2.4 Great Bear Upland LS
- 3.3.2.5 Great Bear Plain LS
- 3.3.2.6 Blackwater Upland LS
- 3.3.2.7 Keller Plain LS
- 3.3.2.8 Lac Grandin Plain LS
- 3.3.2.9 Lac Grandin Upland LS
- 3.3.2.10 Bulmer Plain LS
- 3.3.2.11 Ebbutt Upland LS
- 3.3.2.12 Horn Slopes LS
- 3.3.2.13 Horn Plateau LS
- 3.3.2.14 Cameron Plateau LS

#### 3.3.3 Taiga Plains High Boreal (HB)

- 3.3.3.1 Ebbutt Upland HB
- 3.3.3.2 Horn Plain HB
- 3.3.3.3 Sibbeston Upland HB
- 3.3.3.4 Trout Upland HB
- 3.3.3.5 Cameron Upland HB
- 3.3.3.6 Great Slave Plain HB

#### 3.3.4 Taiga Plains Mid-Boreal (MB)

- 3.3.4.1 South Mackenzie Plain MB
- 3.3.4.2 Liard Plain MB
- 3.3.4.3 Liard Upland MB
- 3.3.4.4 Trout Upland MB
- 3.3.4.5 Horn Slopes MB
- 3.3.4.6 Great Slave Lowland MB
- 3.3.4.7 Tathlina Plain MB
- 3.3.4.8 Cameron Slopes MB
- 3.3.4.9 Slave Upland MB
- 3.3.4.10 Slave Delta MB
- 3.3.4.11 Slave Lowland MB



Projection: Lambert Conformal Conic  
 Datum: NAD83 (CSRS)  
 Data Source: ENR, Government of NWT  
 March 2009