



Thaidene Nënë

Territorial Protected Area



Timeline

1970s – Parks Canada pursues the establishment of a national park reserve in the East Arm of Great Slave Lake, with an indeterminate land withdrawal of 7,340 km².

2007 – Łutsel K'e Dene First Nation and Parks Canada agree to reassess the boundaries for the Thaidene Nënë study area. The resulting interim land withdrawal expands the total withdrawal area to 33,690 km².

2013 – Łutsel K'e Dene First Nation and Parks Canada initial a draft Establishment Agreement.

2014 – GNWT begins discussions on collaborating to create territorial protected and conservation areas in combination with a national park reserve within the interim land withdrawal boundaries. Section 35 consultation and engagement with Parks Canada begins.

2015 – Stakeholder and public engagement meetings and opportunities for written comment on the proposed Thaidene Nënë territorial protected and conservation areas boundaries.

2019 – The GNWT establishes the Territorial Protected Area for Thaidene Nënë through regulations under the [Protected Areas Act](#).

Spanning 9,105 km² through boreal forest and tundra, Thaidene Nënë is a pristine, ecologically important, and culturally indispensable area of the NWT.

It is the homeland for many Dene and Métis peoples – whose ancestors established the sacred, ethical and practical foundations of their way of life in this vast wilderness.

Throughout this homeland are numerous historic, burial, and birth sites; personal experiences; and cultural stories.

Objectives

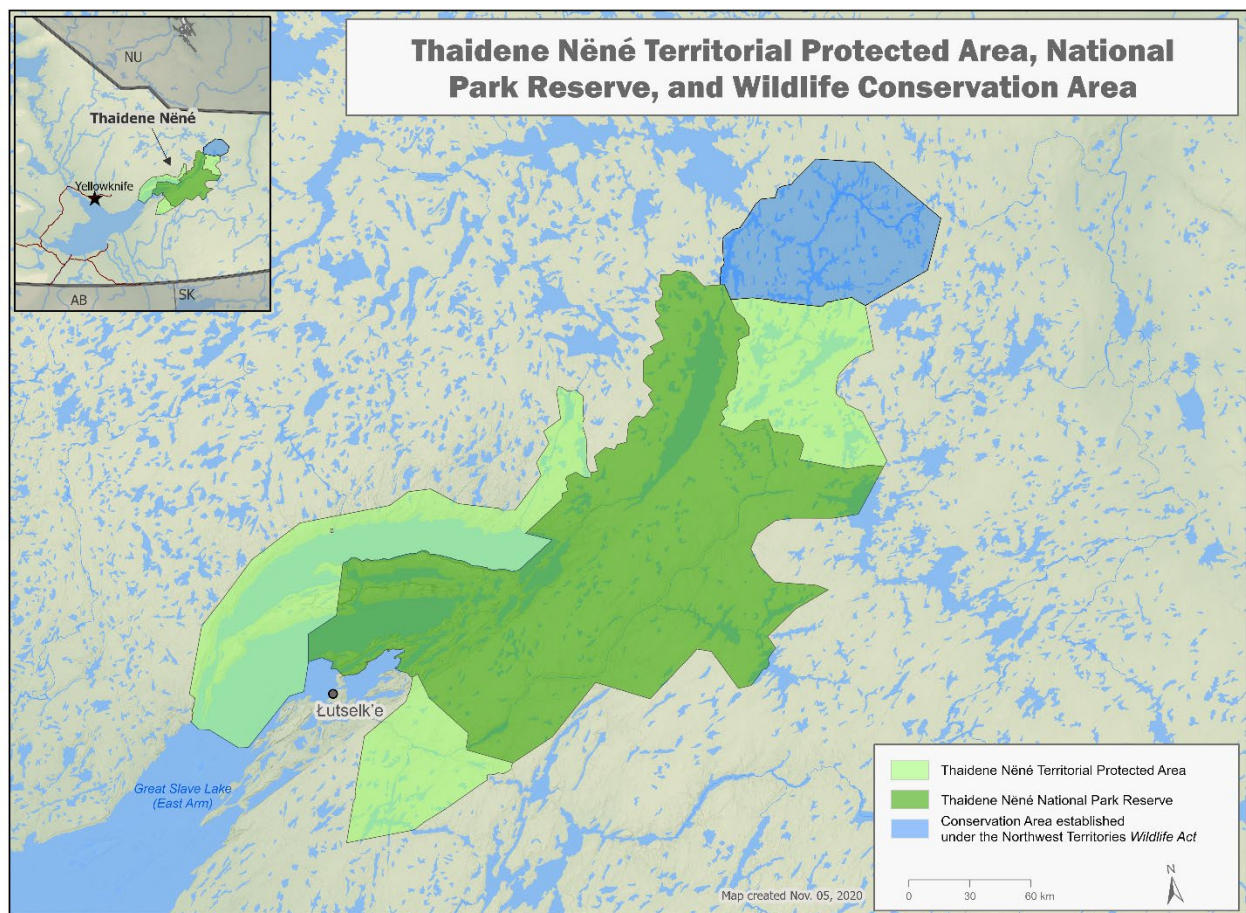
- Biodiversity, ecological integrity and cultural continuity of Thaidene Nënë are to be maintained and promoted for the use, benefit, education and enjoyment of current and future generations.
- Achieve the objectives described in s. 3 of the [Establishment Agreement between the Government of the Northwest Territories and the Łutsël K'e Dene First Nation](#), as well as s. 5 of the [Establishment Agreement between the Government of the Northwest Territories and the Northwest Territory Métis Nation](#).

Why is it important?

- Encompassing several ecosystems within the Taiga and Tundra Shields, the area is important habitat for mammals and fish.
- Several migratory barren-ground caribou spend part of their annual cycle in this area.
- It is an important staging and nesting area for waterfowl and birds-of-prey.

- The area includes several key ecological features including:
 - Cliffs
 - Islands
 - lakes
 - Rivers
 - Waterfalls,
 - Peninsulas,
 - Landscapes shaped by millions of years of ice sheets
 - The deepest freshwater in North America

Map



Legal Information

Confirmation

All conditions precedent to establishing the protected area in any establishment agreement, agreement with a private landholder or other legal agreement have been met.

Description of Area

Size: 9,105 km²

Settlement or other private lands: No settlement or private lands are included within this area

Legal description:

Thaidene Nënë Territorial Protected Area

In the Northwest Territories;

In the vicinity of the East Arm of Great Slave Lake,

The Territorial Protected Area Boundaries are shown on the illustrative map deposited in the Canada Lands Surveys Records as 108431 CLSR NT. The illustration is for clarification purposes only and depicts the written legal description.

All those parcels of lands, and lands covered by water, being more particularly described as Part I, II and III:

Part I

1. Commencing at a point at latitude 62°31'13" North and longitude 110°52'24" West;
2. Thence northerly in a straight line to a point at latitude 62°36'37" North and longitude 110°50'54" West;
3. Thence northeasterly in a straight line to a point at latitude 62°39'31" North and longitude 110°38'02" West;
4. Thence northerly in a straight line to a point at the intersection of longitude 110°32'16" West and the ordinary high water mark on the northerly shore of Kahochella Peninsula at approximate latitude 62°49'30" North;
5. Thence northeasterly in a straight line an approximate distance of 1948 metres to the intersection of latitude 62°49'48" North and a line running parallel to and 100 metres perpendicularly distant offshore from the ordinary high water mark on the northern shore of Kahochella Peninsula, at approximate longitude 110°30'04" West;
6. Thence generally easterly and southeasterly along the sinuosities of said line to a point at the intersection of said line with longitude 109°18'07" West, at approximate latitude 62°43'11" North;
7. Thence northeasterly in a straight line to a point at latitude 62°48'00" North and longitude 109°01'59" West;
8. Thence northwesterly in a straight line to a point at latitude 62°50'06" North and longitude 109°12'51" West;
9. Thence northeasterly in a straight line to a point at latitude 62°55'31" North and longitude 108°55'13" West;
10. Thence northerly in a straight line to a point at latitude 62°56'41" North and longitude 108°54'33" West;

11. Thence northeasterly in a straight line to a point at latitude 62°57'00" North and longitude 108°51'56" West;
12. Thence northerly in a straight line to a point at latitude 62°58'17" North and longitude 108°52'20" West;
13. Thence northeasterly in a straight line to a point at latitude 62°58'30" North and longitude 108°51'22" West;
14. Thence northwesterly in a straight line to a point at latitude 62°59'22" North and longitude 108°52'15" West;
15. Thence northeasterly in a straight line to a point at latitude 62°59'51" North and longitude 108°51'24" West;
16. Thence northeasterly in a straight line to a point at latitude 63°00'21" North and longitude 108°47'10" West;
17. Thence southeasterly in a straight line to a point at latitude 62°59'09" North and longitude 108°44'13" West;
18. Thence easterly in a straight line to a point at latitude 62°58'47" North and longitude 108°41'28" West;
19. Thence northerly in a straight line to a point at latitude 62°59'47" North and longitude 108°40'50" West;
20. Thence northwesterly in a straight line to a point at latitude 62°59'54" North and longitude 108°41'09" West;
21. Thence northwesterly in a straight line to a point at latitude 63°00'27" North and longitude 108°41'50" West;
22. Thence northerly in a straight line to a point at latitude 63°01'39" North and longitude 108°42'06" West;
23. Thence northerly in a straight line to a point at latitude 63°03'04" North and longitude 108°41'26" West;
24. Thence northerly in a straight line to a point at latitude 63°06'28" North and longitude 108°40'27" West;
25. Thence northerly in a straight line to a point at latitude 63°09'44" North and longitude 108°40'52" West;
26. Thence northerly in a straight line to a point at latitude 63°10'26" North and longitude 108°39'58" West;
27. Thence northerly in a straight line to a point at latitude 63°11'10" North and longitude 108°40'15" West;
28. Thence northerly in a straight line to a point at latitude 63°13'31" North and longitude 108°39'07" West;
29. Thence northerly in a straight line to a point at latitude 63°14'50" North and longitude 108°38'52" West;
30. Thence northwesterly in a straight line to a point at latitude 63°16'11" North and longitude 108°41'20" West;
31. Thence westerly in a straight line to a point at latitude 63°16'20" North and longitude 108°45'21" West;
32. Thence northwesterly in a straight line to a point at latitude 63°17'03" North and longitude 108°46'55" West;
33. Thence northwesterly in a straight line to a point at latitude 63°17'24" North and longitude 108°48'12" West;
34. Thence westerly in a straight line to a point at latitude 63°17'24" North and longitude 108°48'42" West;
35. Thence southwesterly in a straight line to a point at latitude 63°16'31" North and longitude 108°49'57" West;
36. Thence southerly in a straight line to a point at latitude 63°16'05" North and longitude 108°49'54" West;
37. Thence southerly in a straight line to a point at latitude 63°15'18" North and longitude 108°49'59" West;
38. Thence southerly in a straight line to a point at latitude 63°11'12" North and longitude 108°50'03" West;
39. Thence southwesterly in a straight line to a point at latitude 63°09'17" North and longitude 108°58'14" West;
40. Thence southerly in a straight line to a point at latitude 63°06'47" North and longitude 108°56'48" West;

41. Thence southwesterly in a straight line to a point at latitude 63°03'30" North and longitude 109°03'28" West;
42. Thence southerly in a straight line to a point at latitude 63°00'47" North and longitude 109°02'21" West;
43. Thence southwesterly in a straight line to a point at latitude 62°54'54" North and longitude 109°15'45" West;
44. Thence westerly in a straight line to a point at latitude 62°55'15" North and longitude 109°21'11" West;
45. Thence northwesterly in a straight line to a point at latitude 62°55'47" North and longitude 109°22'46" West;
46. Thence northwesterly in a straight line to a point at latitude 62°57'50" North and longitude 109°39'31" West;
47. Thence northwesterly in a straight line to a point at latitude 63°01'29" North and longitude 109°50'24" West;
48. Thence westerly in a straight line to a point at latitude 63°01'35" North and longitude 110°00'11" West;
49. Thence southwesterly in a straight line to a point at latitude 62°59'26" North and longitude 110°08'57" West;
50. Thence westerly in a straight line to a point at latitude 62°58'25" North and longitude 110°48'14" West;
51. Thence southwesterly in a straight line to a point at latitude 62°52'28" North and longitude 111°10'54" West;
52. Thence southwesterly in a straight line to a point at latitude 62°45'46" North and longitude 111°24'49" West;
53. Thence southwesterly in a straight line to a point at latitude 62°40'47" North and longitude 111°35'36" West;
54. Thence southwesterly in a straight line to a point at latitude 62°27'48" North and longitude 111°44'12" West;
55. Thence southeasterly in a straight line to the intersection of latitude 62°26'55" North and a line running parallel to and 400 metres perpendicularly distant upland from the ordinary high water mark on the western shore of Hearne Channel of Great Slave Lake, at approximate longitude 111°42'08" West;
56. Thence generally southerly and westerly along the sinuosities of said line to a point at the intersection of said line with longitude 111°45'08" West, at approximate latitude 62°22'27" North;
57. Thence southeasterly in a straight line across Hearne Channel, Great Slave Lake to a point at latitude 62°20'41" North and longitude 111°41'53" West;
58. Thence easterly in a straight line to a point at latitude 62°20'22" North and longitude 111°37'34" West;
59. Thence southeasterly in a straight line to a point at latitude 62°16'11" North and longitude 111°26'17" West;
60. Thence easterly in a straight line to a point at latitude 62°16'00" North and longitude 111°22'12" West;
61. Thence northeasterly in a straight line to a point at latitude 62°25'00" North and longitude 111°02'23" West;
62. Thence easterly in a straight line to a point at latitude 62°25'33" North and longitude 110°55'55" West;
63. Thence northerly in a straight line to the point of commencement.

Excluding Lot 1000, Quad 75 K/14, as shown on a plan of record at Ottawa as Plan 66450 CLSR, a copy of which is filed in the Land Titles Office at Yellowknife as 1395 LTO;

Said parcel being more particularly described as follows:

Commencing at the point of intersection of 62°55'44.899 north latitude, and 110°35'39.031 west longitude,

Thence in a straight line in a northerly direction to the point of intersection of 62°56'25.647 north latitude, and 110°35'37.958 west longitude,

Thence in a straight line in an easterly direction to the point of intersection of 62°56'25.048 north latitude, and 110°34'32.393 west longitude,

Thence in a straight line in a southerly direction to the point of intersection of 62°55'44.230 north latitude, and 110°34'33.963 west longitude,

Thence in a straight line in a westerly direction to the point of commencement.

Said parcel containing an approximate area of 4852 square kilometres.

Part II

1. Commencing at a point at latitude 62°25'28" North and longitude 110°09'36" West;
2. Thence easterly in a straight line to a point at latitude 62°25'58" North and longitude 110°07'16" West;
3. Thence southerly in a straight line to a point at latitude 62°20'59" North and longitude 110°03'46" West;
4. Thence southeasterly in a straight line to a point at latitude 62°13'02" North and longitude 109°49'36" West;
5. Thence southwesterly in a straight line to a point at latitude 62°10'37" North and longitude 109°51'12" West;
6. Thence southerly in a straight line to a point at latitude 62°09'50" North and longitude 109°51'19" West;
7. Thence southeasterly in a straight line to a point at latitude 62°06'00" North and longitude 109°32'57" West;
8. Thence southwesterly in a straight line to a point at latitude 62°05'26" North and longitude 109°33'49" West;
9. Thence southerly in a straight line to a point at latitude 62°04'48" North and longitude 109°34'06" West;
10. Thence southwesterly in a straight line to a point at latitude 62°04'25" North and longitude 109°35'51" West;
11. Thence southwesterly in a straight line to a point at latitude 62°04'12" North and longitude 109°37'42" West;
12. Thence northwesterly in a straight line to a point at latitude 62°04'30" North and longitude 109°39'45" West;
13. Thence westerly in a straight line to a point at latitude 62°04'17" North and longitude 109°41'38" West;
14. Thence northwesterly in a straight line to a point at latitude 62°04'31" North and longitude 109°43'11" West;
15. Thence southerly in a straight line to a point at latitude 62°03'27" North and longitude 109°44'30" West;
16. Thence southwesterly in a straight line to a point at latitude 62°02'36" North and longitude 109°48'23" West;
17. Thence southwesterly in a straight line to a point at latitude 61°58'55" North and longitude 110°03'52" West;
18. Thence southwesterly in a straight line to a point at latitude 61°57'04" North and longitude 110°12'58" West;
19. Thence southwesterly in a straight line to a point at latitude 61°55'50" North and longitude 110°17'31" West;
20. Thence westerly in a straight line to a point at latitude 61°55'45" North and longitude 110°19'06" West;
21. Thence westerly in a straight line to a point at latitude 61°55'02" North and longitude 110°46'24" West;
22. Thence northeasterly in a straight line to a point at latitude 62°02'41" North and longitude 110°41'26" West;

23. Thence northeasterly in a straight line to a point at latitude 62°03'52" North and longitude 110°39'59" West;
24. Thence northerly in a straight line to a point at latitude 62°04'43" North and longitude 110°40'06" West;
25. Thence northeasterly in a straight line to a point at latitude 62°20'53" North and longitude 110°13'55" West;
26. Thence northeasterly in a straight line to a point at latitude 62°23'19" North and longitude 110°11'01" West;
27. Thence northeasterly in a straight line to the point of commencement.

Said parcel containing an approximate area of 1798 square kilometres.

Part III

1. Commencing at a point at latitude 63°28'28" North and longitude 107°27'50" West;
2. Thence easterly in a straight line to a point at latitude 63°28'01" North and longitude 107°18'21" West;
3. Thence in southeasterly a straight line to a point at latitude 63°27'05" North and longitude 107°11'21" West;
4. Thence southeasterly in a straight line to a point at latitude 63°26'07" North and longitude 107°06'43" West;
5. Thence southeasterly in a straight line to a point at latitude 63°23'45" North and longitude 106°49'02" West
6. Thence northeasterly in a straight line to a point at latitude 63°24'30" North and longitude 106°46'29" West;
7. Thence easterly in a straight line to a point at latitude 63°24'28" North and longitude 106°43'08" West;
8. Thence easterly in a straight line to a point at latitude 63°24'23" North and longitude 106°35'31" West;
9. Thence southeasterly in a straight line to a point at latitude 63°23'16" North and longitude 106°33'00" West;
10. Thence southeasterly in a straight line to a point at latitude 63°22'19" North and longitude 106°30'29" West;
11. Thence southerly in a straight line to a point at latitude 63°13'27" North and longitude 106°30'45" West;
12. Thence westerly in a straight line to a point at latitude 63°12'41" North and longitude 106°38'56" West;
13. Thence southwesterly in a straight line to a point at latitude 63°11'48" North and longitude 106°42'31" West;
14. Thence southwesterly in a straight line to a point at latitude 63°10'16" North and longitude 106°47'07" West;
15. Thence southwesterly in a straight line to a point at latitude 63°09'38" North and longitude 106°48'11" West;
16. Thence southwesterly in a straight line to a point at latitude 63°07'45" North and longitude 106°49'58" West;
17. Thence southeasterly in a straight line to a point at latitude 63°05'40" North and longitude 106°49'10" West;
18. Thence southeasterly in a straight line to a point at latitude 63°05'19" North and longitude 106°47'38" West;
19. Thence southerly in a straight line to a point at latitude 63°04'04" North and longitude 106°47'00" West;
20. Thence southeasterly in a straight line to a point at latitude 63°02'04" North and longitude 106°40'47" West;
21. Thence southeasterly in a straight line to a point at latitude 62°51'40" North and longitude 106°34'34" West;
22. Thence southwesterly in a straight line to a point at latitude 62°50'40" North and longitude 106°36'22" West;
23. Thence northwesterly in a straight line to a point at latitude 62°51'30" North and longitude 106°42'10" West;

24. Thence westerly in a straight line to a point at latitude 62°51'36" North and longitude 106°51'46" West;
25. Thence northwesterly in a straight line to a point at latitude 62°55'10" North and longitude 107°11'22" West;
26. Thence northeasterly in a straight line to a point at latitude 62°57'54" North and longitude 107°08'24" West;
27. Thence northwesterly in a straight line to a point at latitude 62°59'48" North and longitude 107°09'47" West;
28. Thence northwesterly in a straight line to a point at latitude 63°01'31" North and longitude 107°20'10" West;
29. Thence northerly in a straight line to a point at latitude 63°04'05" North and longitude 107°21'29" West;
30. Thence westerly in a straight line to a point at latitude 63°04'13" North and longitude 107°27'08" West;
31. Thence southwesterly in a straight line to a point at latitude 63°02'38" North and longitude 107°33'33" West;
32. Thence northwesterly in a straight line to a point at latitude 63°04'45" North and longitude 107°42'40" West;
33. Thence northeasterly in a straight line to a point at latitude 63°05'42" North and longitude 107°39'54" West;
34. Thence northerly in a straight line to a point at latitude 63°07'16" North and longitude 107°40'51" West;
35. Thence northeasterly in a straight line to a point at latitude 63°08'04" North and longitude 107°37'32" West;
36. Thence northerly in a straight line to a point at latitude 63°09'45" North and longitude 107°37'34" West;
37. Thence northeasterly in a straight line to a point at latitude 63°10'48" North and longitude 107°35'41" West;
38. Thence northeasterly in a straight line to a point at latitude 63°13'00" North and longitude 107°31'35" West;
39. Thence northeasterly in a straight line to a point at latitude 63°16'00" North and longitude 107°29'40" West;
40. Thence northerly in a straight line to a point at latitude 63°18'20" North and longitude 107°29'29" West;
41. Thence northeasterly in a straight line to a point at latitude 63°19'23" North and longitude 107°27'34" West;
42. Thence northerly in a straight line to a point at latitude 63°20'27" North and longitude 107°27'54" West;
43. Thence easterly in a straight line to a point at latitude 63°21'01" North and longitude 107°22'53" West;
44. Thence northerly in a straight line to a point at latitude 63°22'32" North and longitude 107°22'19" West;
45. Thence northwesterly in a straight line to a point at latitude 63°24'20" North and longitude 107°23'32" West;
46. Thence northwesterly in a straight line to a point at latitude 63°25'52" North and longitude 107°26'28" West;
47. Thence northerly in a straight line to the point of commencement.

Said parcel containing an approximate area of 2452 square kilometres.

All coordinates above are referred to the 1983 North American Datum, Canadian Spatial Reference System (NAD83 CSRS) and any references to straight lines mean points joined directly on a NAD83 CSRS Universal Transverse Mercator (UTM) projection plane surface

CERTIFIED CORRECT