



Ts'udé Niljné Tuyeta

#

h

..

.



U

1993 – The Ramparts is identified as a Sahtú heritage place/site in the Sahtú Dene and Métis Comprehensive Claim.

2006 – Ts'udé Niljné Tuyeta is sponsored as a candidate protected area under the NWT Protected Areas Strategy.

2007 – The Ts'udé Niljné Tuyeta Working Group is established.

2012 – The Final Working Group Recommendation Report is released.

2013 – The K'asho Got'ine Lands Corporation requests establishment of Ts'udé Niljné Tuyeta.

2019 – The GNWT provides a [preliminary screening notification](#) for the establishment of Thaidene Nëné Territorial Protected Area. Comments received can be found on the Mackenzie Valley Environmental Impact Review Board [Public Registry](#).

2019 – The GNWT and the K'asho Got'ine sign an [establishment agreement for Ts'udé Niljné Tuyeta](#) on September 4th, 2019.

Ts'udé Niljné Tuyeta is a 10,060 km² area west of Fort Good Hope and adjacent to Sahtú and Gwich'in settlement areas including the Ramparts River watershed.

The area holds powerful cultural importance to the K'ahsho Got'ine (Fort Good Hope and Colville Lake Dene and Métis). It is a place where knowledge is passed through generations and home to historic locations, births, burial sites, personal experiences, and cultural stories.

Decisions surrounding this protected area will:

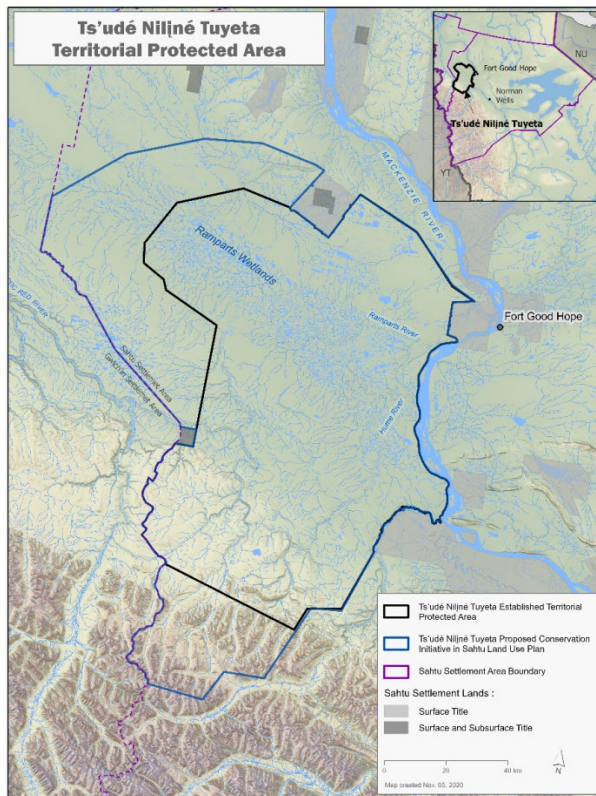
- Respect and protect the land and waters
- Sustain the K'ahsho Got'ine way of life
- Contribute to reconciliation

†

@

- For generations, Ts'udé Niljné Tuyeta has supported the K'ahsho Got'ine way of life. It is a hotbed for traditional activities like hunting, trapping, and fishing.
- The Ramparts River watershed filters millions of litres of water every day. It is important to migratory birds as a nesting, brood rearing and staging area.
- The area is home to mammals and fish including six species at risk:
 - Peregrine falcon
 - Grizzly bear
 - Mountain caribou
 - Wolverine
 - Short-eared owl
 - Boreal woodland caribou

Map



Legal information

Confirmation

All conditions precedent to establishing the protected area in any establishment agreement, agreement with a private landholder or other legal agreement have been met.

Legal Description

Size: 10,060 km²

Settlement or other private lands: No settlement or private lands are included within this area

Description:

In the Northwest Territories;

In the vicinity of the Municipality of Fort Good Hope;

The Ts'udé Niljné Tuyeta Protected Area Boundaries are shown on the illustrative map deposited in the Canada Lands Surveys Records as 108433 CLSR NT. The illustration is for clarification purposes only and depicts the written legal description.

All that parcel of land, and land covered by water, being more particularly described as follows:

1. Commencing at the northeast corner of Sahtu Parcel 14, Lot 1000, Quad 106 J/09 (monument 13L1000, 102129 CLSR, 4532 LTO);
2. Thence generally southwesterly and northwesterly along the southeast and southwest boundary of limit of said parcel to the southwest corner of Sahtu Parcel 14, Lot 1000, Quad 106 J/09 (monument 117L1000, 102129 CLSR, 4532 LTO);
3. Thence northwesterly in a straight line to a point at latitude 66°31'40"N and longitude 130°38'35"W;
4. Thence southwesterly in a straight line to a point at latitude 66°27'03"N and longitude 131°06'03"W;
5. Thence southwesterly in a straight line to a point at latitude 66°19'06"N and longitude 131°16'34"W;
6. Thence southeasterly in a straight line to a point at latitude 66°15'41"N and longitude 131°15'10"W;
7. Thence southeasterly in a straight line to a point at latitude 66°13'33"N and longitude 131°05'22"W;
8. Thence southeasterly in a straight line to a point at latitude 66°11'50"N and longitude 131°03'30"W;
9. Thence southeasterly in a straight line to a point at latitude 66°07'27"N and longitude 130°39'11"W;
10. Thence southerly in a straight line to the northeast corner of Sahtu Parcel M6, Lot 1000, Quad 106 G/15 (monument 2L1000, 90220 CLSR, 3998 LTO);
11. Thence southerly and westerly along the eastern and southern limit of said parcel to the intersection of the southern boundary of said parcel with west boundary of the Sahtu Settlement Area (approximate latitude 65°46'00"N and longitude 130°47'17"W);
12. Thence generally southwesterly and southeasterly along the west boundary of the Sahtu Settlement Area to a point of longitude 130°42'03"W and approximate latitude 65°25'06"N;
13. Thence southeasterly in a straight line to a point at latitude 65°17'50"N and longitude 129°44'00"W;

14. Thence northeasterly in a straight line to a point at latitude 65°21'50"N and longitude 129°39'57"W;

15. Thence northeasterly in a straight line to a point at latitude 65°22'46"N and longitude 129°25'50"W;

16. Thence northeasterly in a straight line to the intersection of latitude 65°33'25"N with the Ordinary High Water Mark (O.H.W.M.) of the west bank of the Mountain River at approximate longitude 129°16'18"W;

17. Thence generally northerly and easterly along the sinuosities of the Ordinary High Water Mark (O.H.W.M.) of said river to its intersection with the west bank of the Mackenzie River at approximate latitude 65°41'52"N and approximate longitude 128°50'05"W;

18. Thence generally northerly along the sinuosities of the Ordinary High Water Mark (O.H.W.M.) of the Mackenzie River to the intersection of the northeast bank of unnamed stream situated along the southern limit of Sahtu Parcel 21, Lot 1012, Quad 106 I/07, (102106 CLSR, 4531 LTO); (approximate latitude 66°11'46"N and approximate longitude 128°55'27"W)

19. Thence northwesterly, northerly and northeasterly along the boundary of Sahtu Parcel 21, Lot 1012, Quad 106 I/07, (102106 CLSR, 4531 LTO) to a point between monuments 6BL1012 and 6CL1012 (102106 CLSR, 4531 LTO) and the intersection of longitude 128°50'55"W at approximate latitude 66°19'09"N;

20. Thence northwesterly in a straight line to a point at latitude 66°21'09"N and longitude 129°01'26"W;

21. Thence northwesterly in a straight line to a point at latitude 66°29'25"N and longitude 129°20'24"W;

22. Thence northwesterly in a straight line to a point at latitude 66°34'14"N and longitude 129°47'37"W;

Thence southwesterly in a straight line to the point of commencement.

Said parcel containing an approximate area of 10,101 square kilometres.

All coordinates above are referred to the 1983 North American Datum, Canadian Spatial Reference System (NAD83 CSRS) and any references to straight lines mean points joined directly on a NAD83 CSRS Universal Transverse Mercator (UTM) projection plane surface.

CERTIFIED CORRECT