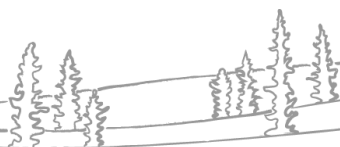


NWT Water Monitoring Spring Break-Up Report

May 6, 2026 at 14:00

Surveillance des eaux aux TNO
Rapport sur la débâcle
printanière
6 mai 2026 à 14 h



NWT break-up reports will be published routinely as break up-unfolds. These reports will focus on regions with active snowmelt and ice break- up. The geographic focus of the report will shift as conditions change. Additional information about basin conditions can be found in the 2026 Spring Water Outlook, [available here](#). If you have any photos or information about break-up in your community, feel free to reach out to us: nwtwaters@gov.nt.ca.

Current Status:

- Break-up on the Hay River continues to be thermal (river ice melting in place), and water levels measured at the AB/NT border and the Town of Hay River are well below average.
- Break-up related flood risk for Fort Liard has passed for 2026 as the Liard River is almost entirely free of river ice.
 - Liard River ice has moved downstream past Fort Simpson as of yesterday morning.
- Break-up is progressing along the Mackenzie River between Fort Providence and Fort Simpson.
 - River ice on the Mackenzie River remains largely intact upstream of Fort Simpson.
 - Water level measured using the Village of Fort Simpson gauge rose to approximately 11 m yesterday morning and has since decreased to 7.2 m (as of 09:00 this morning).
 - Water level measured on the Mackenzie River near Jean Marie River is slowly rising underneath intact ice.
 - Above-average temperatures forecasted for this week and a significant precipitation event (approximately 10-20 mm) starting this evening should result in continued ice movement and ice degradation along the Mackenzie River.

Nous publierons régulièrement des rapports sur la débâcle aux TNO au fur et à mesure de l'évolution de la situation. Ces rapports se concentreront sur les régions où la fonte des neiges et la débâcle sont en cours. Nous changerons de région géographique en fonction de l'évolution de la situation. Vous trouverez des informations complémentaires sur l'état du bassin dans l'Aperçu des eaux printanières 2026, disponible ici. Si vous avez des photos ou des renseignements en lien avec la débâcle dans votre collectivité, n'hésitez pas à communiquer avec nous à l'adresse suivante : nwtwaters@gov.nt.ca.

Situation actuelle

- La débâcle sur la rivière Hay continue d'être thermique (c.-à-d. que la glace fond principalement sur place), et les niveaux d'eau mesurés à la frontière Alberta-TNO et à la hauteur de la Ville de Hay River sont bien inférieurs à la moyenne.

- Le risque d'inondation lié à la débâcle pour Fort Liard n'est plus présent pour 2026, car il n'y a presque plus de glace sur la rivière Liard.
 - Hier matin, la glace sur la rivière Liard s'était déplacée en aval, au-delà de Fort Simpson.
- La débâcle progresse le long du fleuve Mackenzie entre Fort Providence et Fort Simpson.
 - La glace sur le fleuve Mackenzie reste en grande partie intacte en amont de Fort Simpson.
 - Le niveau d'eau mesuré à l'aide de la jauge du village de Fort Simpson a atteint environ 11 m hier matin et est depuis redescendu à 7,2 m (à 9 h ce matin).
 - Le niveau d'eau mesuré sur le fleuve Mackenzie près de Jean Marie River monte lentement sous la glace intacte.
 - Les températures supérieures à la moyenne prévues pour cette semaine et les fortes précipitations (environ 10 à 20 mm) attendues à partir de ce soir devraient faire en sorte que la glace continuera de se déplacer et de se dégrader le long du fleuve Mackenzie.

Contents

| | |
|---|----|
| Current Status: | 2 |
| Situation actuelle | 2 |
| Hay River | 6 |
| Current Status: | 6 |
| Station Map:..... | 6 |
| Hydrometric Data: | 7 |
| Hay River near Hay River [07OB001] | 7 |
| Hay River near Alta/NWT Boundary [07OB008]..... | 7 |
| Steen River near Steen River [07OB004]..... | 8 |
| Gauge photos: | 9 |
| Hay River near Alta/Nwt Boundary [07OB008] | 9 |
| Hay River near Hay River [07OB001] | 9 |
| Liard River | 10 |
| Current Status: | 10 |
| Station Map:..... | 10 |
| Hydrometric Data: | 11 |
| Liard River at Upper Crossing [10AA001] | 11 |
| Liard River at Fort Liard [10ED001]..... | 11 |
| Liard River near the mouth [10ED002]..... | 11 |
| Gauge photos: | 12 |
| Liard River at Upper Crossing [10AA001] | 12 |
| Liard River at Fort Liard [10ED001]..... | 12 |
| Liard River near the Mouth [10ED002]..... | 13 |
| Mackenzie River | 14 |
| Current Status: | 14 |
| Station Map:..... | 15 |
| Hydrometric Data: | 16 |
| Mackenzie River near Fort Providence [10FB001]..... | 16 |
| Mackenzie River at Fort Simpson [10GC001] | 16 |
| Gauge photos: | 17 |
| Mackenzie River at Jean Marie River [10FB007] | 17 |
| Mackenzie River at Strong Point [10FB006]..... | 17 |
| Mackenzie River at Fort Simpson [10GC001] | 18 |
| Weather Data: | 19 |

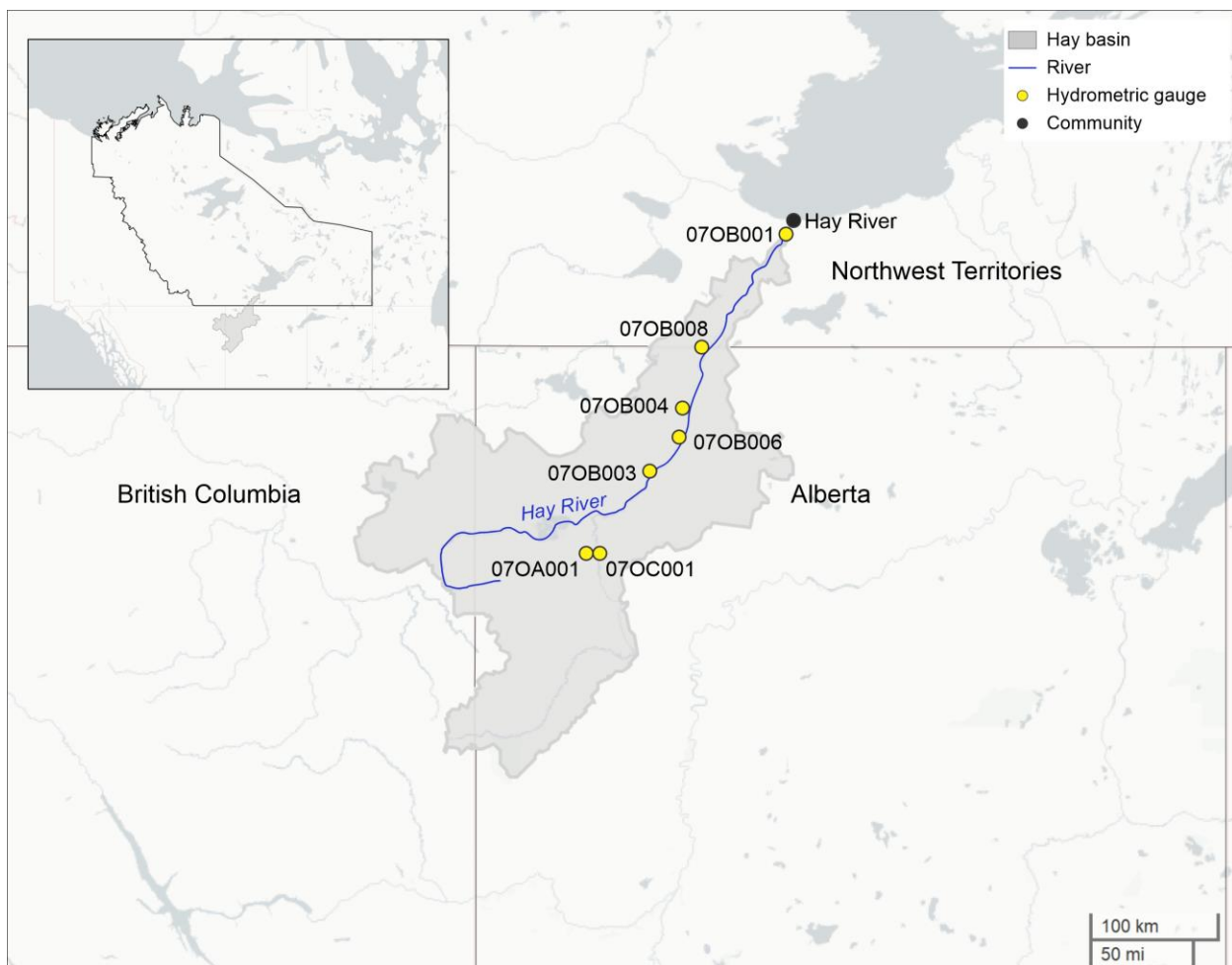
| | |
|---|----|
| High Level Air Temperature..... | 19 |
| Hay River Air Temperature | 20 |
| Fort Simpson Air Temperature | 20 |
| Sambaa K'e Air Temperature | 21 |
| Weather Forecasts:..... | 21 |
| Factors to Watch: | 24 |
| Spring Break up on NWT Rivers: Mechanical vs Thermal..... | 24 |
| Technical Note:..... | 25 |
| Appendix A: River Ice Imagery | 26 |
| Appendix B: High resolution and historic water level plots | 31 |
| Hay River Near Hay River (07OB001) | 31 |
| Hay River Near Alta/Nwt Boundary (07OB008) | 32 |
| Steen River Near Steen River (07OB004)..... | 33 |
| Liard River At Upper Crossing (10AA001) | 34 |
| Mackenzie River Near Fort Providence (10FB001)..... | 35 |
| Mackenzie River At Jean Marie River (10FB007)..... | 36 |

Hay River

Current Status:

- Break-up on the Hay River continues to be thermal, with ice melting out in place.
 - There are sections of intact ice and open water between the AB/NT border and the town of Hay River.
- Water levels on the Hay River are well below average.
 - Levels measured at the town of Hay River and at the AB/NT border are continuing to rise.
- Snowmelt is near complete in the Hay River basin.
 - Forecasted average to above average temperatures this week should result in continued ice degradation and break-up.

Station Map:

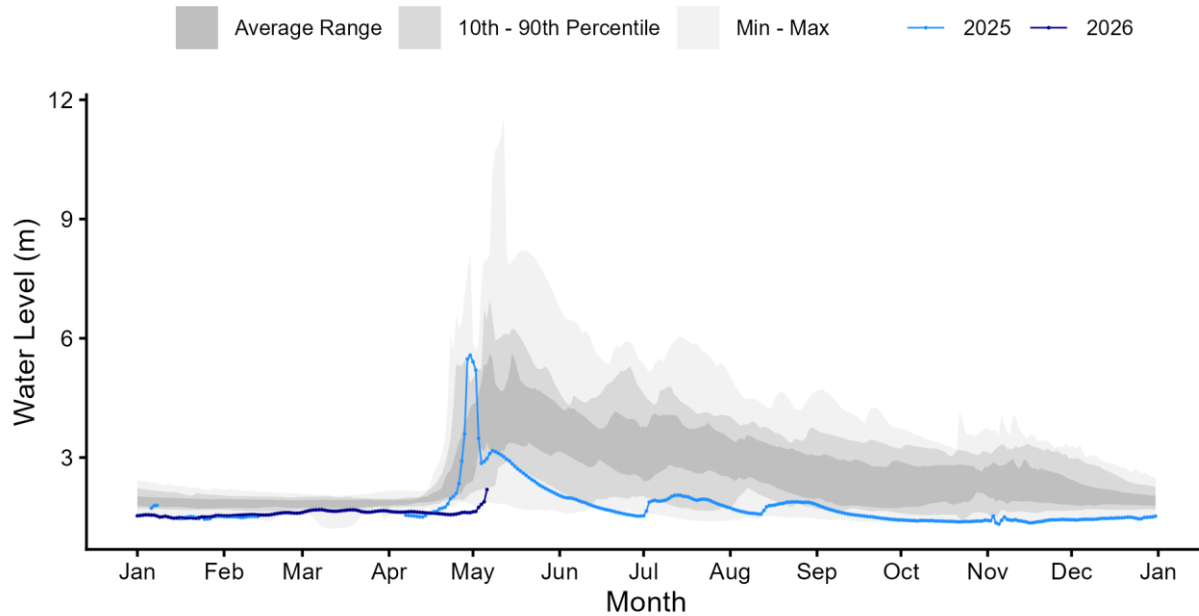


Above: Map of Hydrometric Stations and nearby communities for the plots included in this section.

Hydrometric Data:

Hay River near Hay River [07OB001]

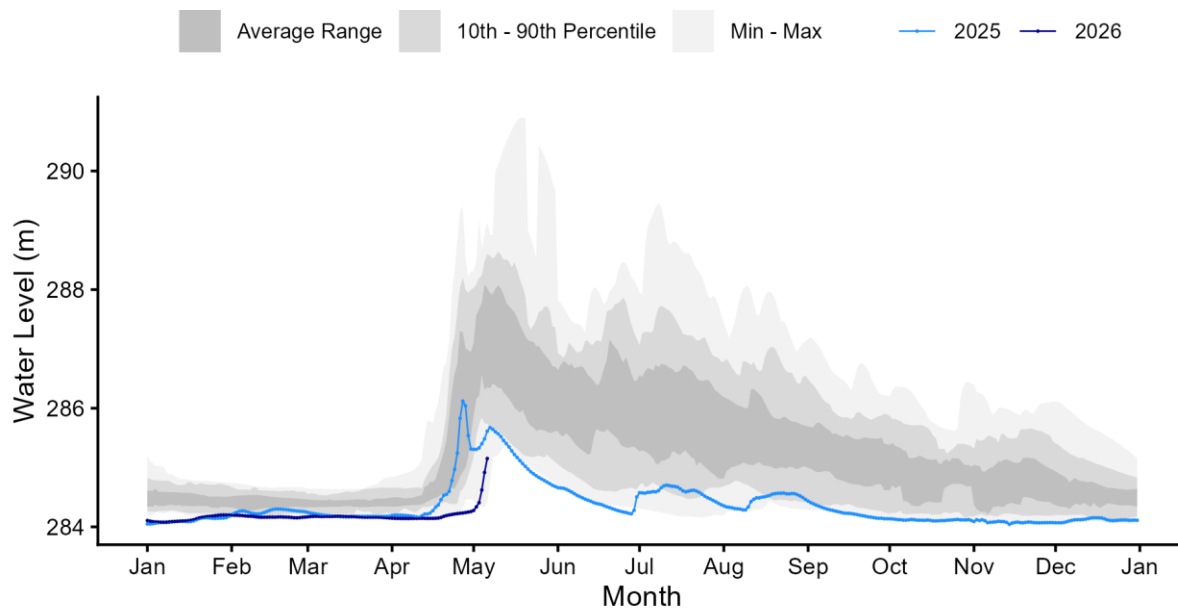
HAY RIVER NEAR HAY RIVER (07OB001)



Above - Water level data for Hay River near Hay River [07OB001]. Daily average levels for the previous year also are shown here.

Hay River near Alta/NWT Boundary [07OB008]

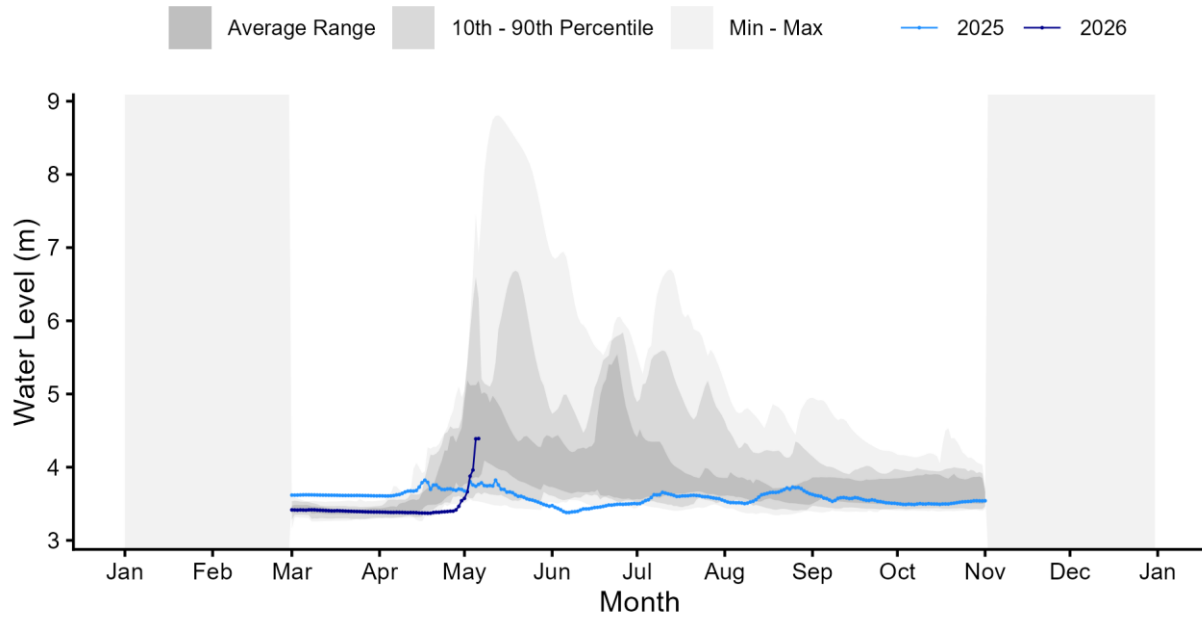
HAY RIVER NEAR ALTA/NWT BOUNDARY (07OB008)



Above - Water level data for Hay River near Alta/Nwt Boundary [07OB008]. Daily average levels for the previous year also are shown here.

Steen River near Steen River [070B004]

STEEN RIVER NEAR STEEN RIVER (070B004)



Above - Water level data for Steen River near Steen River [070B004]. Daily average levels for the previous year also are shown here.

Gauge photos:

Hay River near Alta/Nwt Boundary [070B008]

070B008 2026-05-06 17:01:06 UTC
60.00388, -116.97220 14.5V 15.5°C P



Above - Hay River near Alta/Nwt Boundary [070B008] hydrometric gauge photo from May 6 at 11:00. Photo courtesy of Water Survey of Canada and GNWT.

Hay River near Hay River [070B001]

070B001 2026-05-06 17:01:16 UTC
60.74337, -115.85951 14.2V 16.5°C P



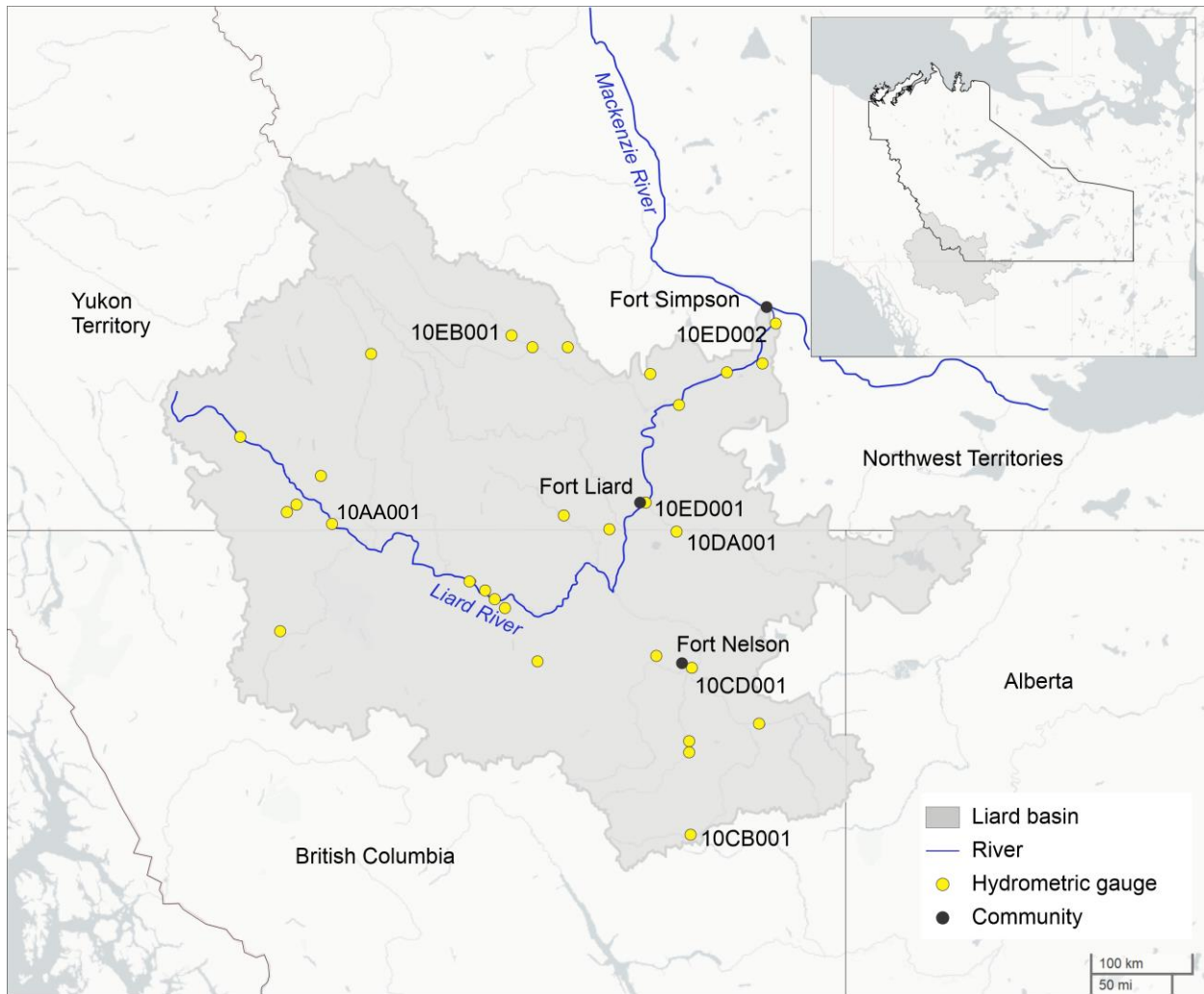
Above - Hay River near Hay River [070B001] hydrometric gauge photo from May 6 at 11:00. Photo courtesy of Water Survey of Canada and GNWT.

Liard River

Current Status:

- The break-up risk for Fort Liard has passed, as the river is almost entirely free of river ice.
 - Small areas of rubble ice might remain upstream of Fort Liard.
- Average to above average temperatures forecasted for this week should result in continued snowmelt from higher altitude areas within the basin.

Station Map:

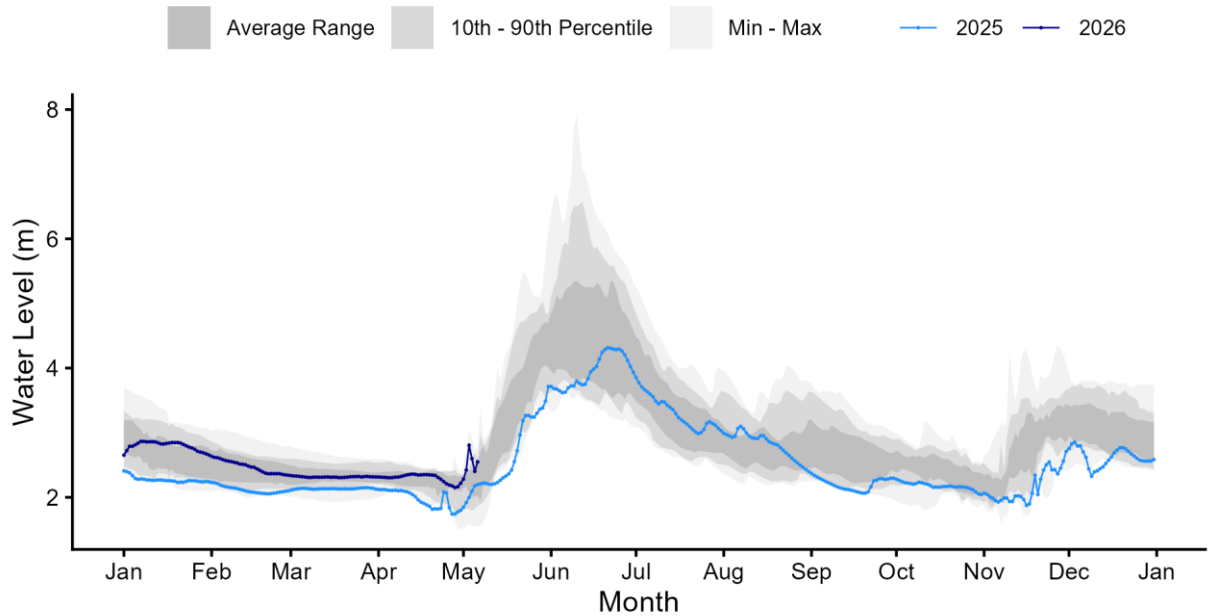


Above: Map of Hydrometric Stations and nearby communities for the plots included in this section.

Hydrometric Data:

Liard River at Upper Crossing [10AA001]

LIARD RIVER AT UPPER CROSSING (10AA001)



Above - Water level data for Liard River at Upper Crossing [10AA001]. Daily average levels for the previous year also are shown here.

Liard River at Fort Liard [10ED001]

Water level sensors for Liard River at Fort Liard [10ED001] have been impacted by river ice and the station is no longer producing data.

Liard River near the mouth [10ED002]

Water level sensors for Liard River near the mouth [10ED002] have been impacted by river ice and the data are currently being suppressed.

Gauge photos:

Liard River at Upper Crossing [10AA001]

10AA001 2026-05-06 15:01:50 UTC 60.05082, -128.90688 12.9V 14.0C P



Above - Liard River at Upper Crossing [10AA001] hydrometric gauge photo from May 6 at 08:00. Photo courtesy of Water Survey of Canada.

Liard River at Fort Liard [10ED001]

10ED001_FortLiard 2026-05-06 18:01:14 UTC
60.24142, -123.47552 13.6V 21.5°C P



Above - Liard River at Fort Liard [10ED001] hydrometric gauge photo from May 6 at 12:00. Photo courtesy of Water Survey of Canada and GNWT.

Liard River near the Mouth [10ED002]

10ED002_LiardMouth 2025-05-06 19:01:14 UTC
61.74267, -121.22787 12.5V 16.0°C P



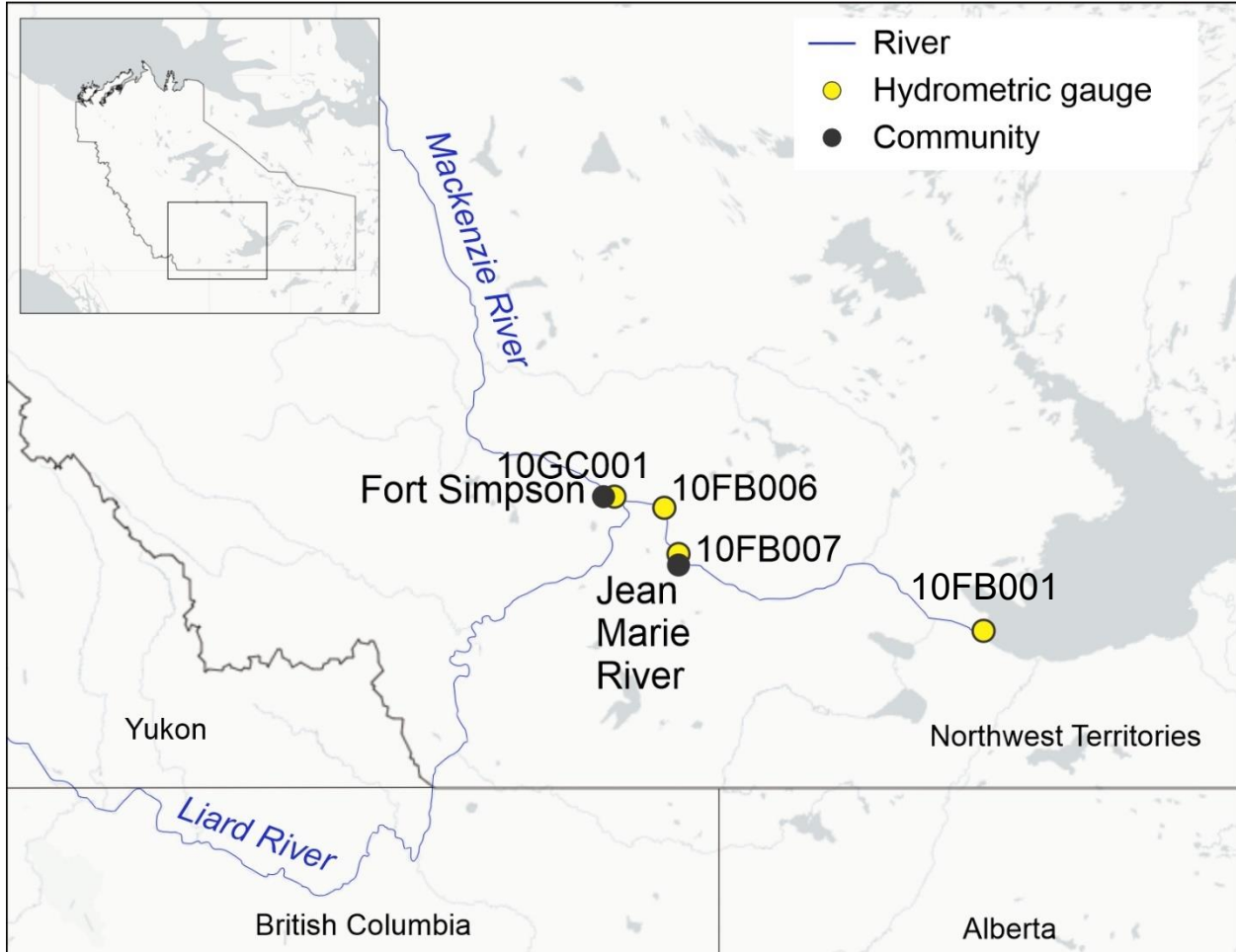
Above - Liard River near the Mouth [10ED002] hydrometric gauge photo from May 6 at 13:00. Photo courtesy of Water Survey of Canada and GNWT.

Mackenzie River

Current Status:

- Break-up is progressing along the Mackenzie River between Fort Providence and Fort Simpson.
 - A large section of rubble ice moved downstream past Fort Simpson yesterday morning (May 5), creating an open water section near the community.
 - According to satellite imagery from May 5, a small ice jam (~20 km in length) is sitting approximately 10 km downstream of Fort Simpson.
 - River ice remains largely intact between Fort Providence and Martin Island (the island is 5 km upstream of Fort Simpson).
- The Mackenzie River at Fort Simpson gauge has been impacted by ice and is no longer producing data. The gauge operated by the Village of Fort Simpson is operational.
 - The water level rose to approximately 11 m as of 10:30 on May 5 and was 7.2 m as of 09:00 this morning (May 6). *For reference, the peak water level at this gauge during the Fort Simpson flood of 2021 was 15.99 m (on May 14, 2021).*
- Water level measured on the Mackenzie River near Jean Marie River is slowly rising underneath intact ice.
- Above average temperatures forecasted for this week and a significant precipitation event (approximately 10-20 mm) starting this evening should result in continued ice movement and ice degradation along the Mackenzie River.

Station Map:

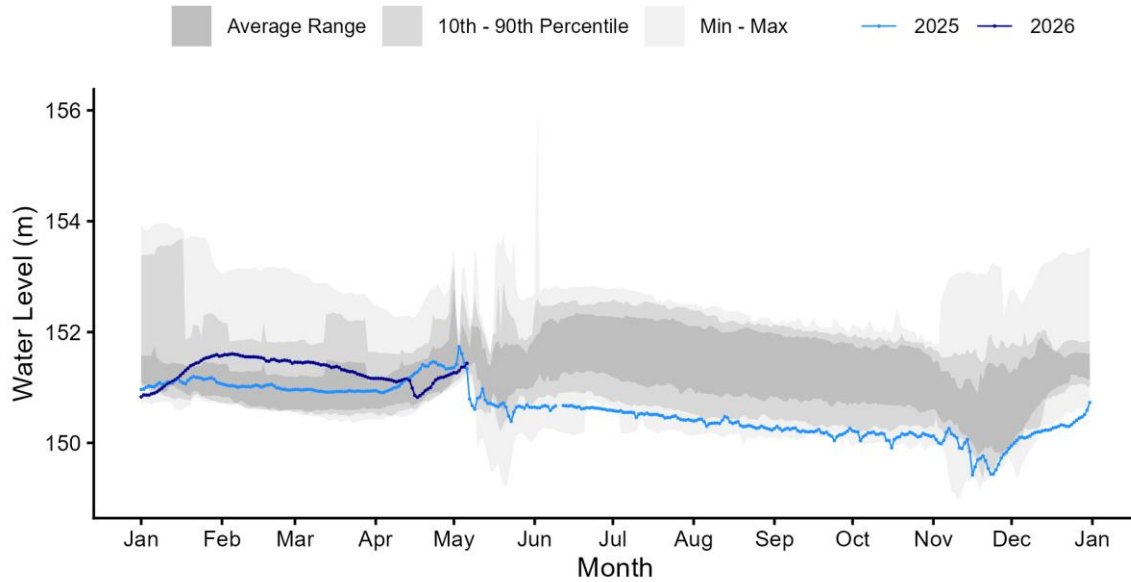


Above: Map of Hydrometric Stations and nearby communities for the plots included in this section.

Hydrometric Data:

Mackenzie River near Fort Providence [10FB001]

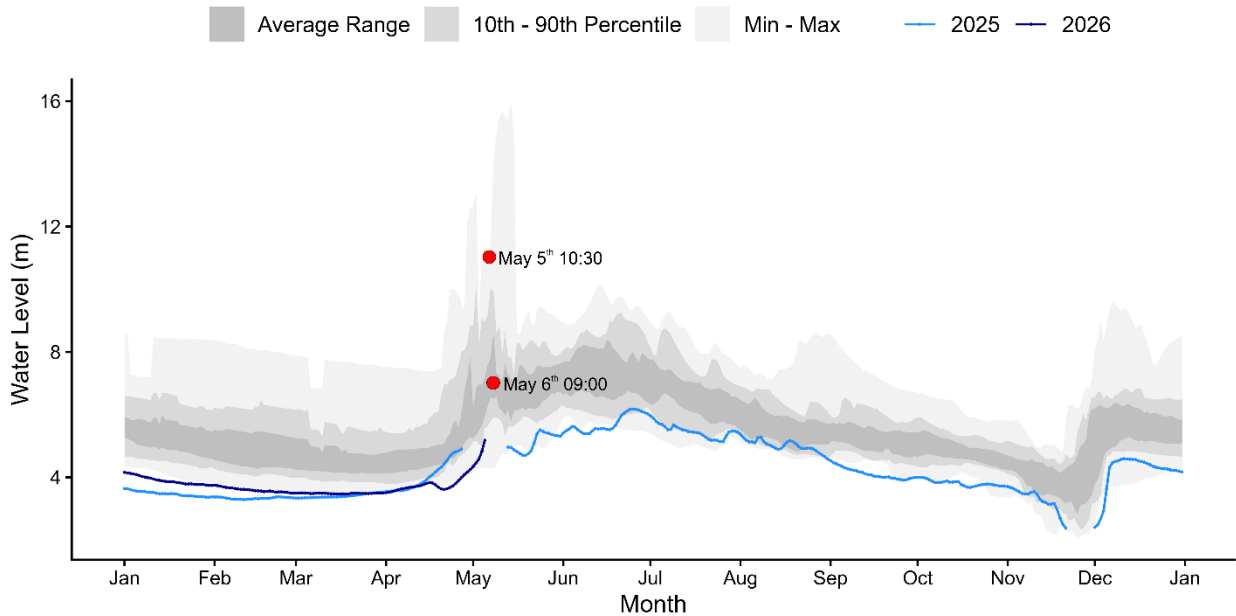
MACKENZIE RIVER NEAR FORT PROVIDENCE (10FB001)



Above - Water level data for Mackenzie River near Fort Providence [10FB001]. Daily average levels for the previous year also are shown here.

Mackenzie River at Fort Simpson [10GC001]

MACKENZIE RIVER AT FORT SIMPSON (10GC001)



Above - Water level data for Mackenzie River at Fort Simpson [10GC001] up until May 4th. Daily average levels for the previous year also are shown here. Data points from the Village of Fort Simpson gauge have been added onto this graph (shown as red circles).

Gauge photos:

Mackenzie River at Jean Marie River [10FB007]

10FB007 2026-05-06 19:01:58 UTC 61.52551, -120.62289 14.3V 13.0C P



Above - Mackenzie River at Jean Marie River [10FB007] hydrometric gauge photo from May 6 at 13:00. Photo courtesy of Water Survey of Canada and GNWT.

Mackenzie River at Strong Point [10FB006]

10FB006_MackStrongPoint 2026-05-06 15:01:14 UTC
61.81648, -120.79188 12.5V 7.5°C P



Above - Mackenzie River at Strong Point [10FB006] hydrometric gauge photo from May 6 at 09:00. Photo courtesy of Water Survey of Canada and GNWT.

Mackenzie River at Fort Simpson [10GC001]

10GC001_MackSimpson 2026-05-06 17:01:14 UTC
61.86806, -121.35841 14.1V 9.0°C P



Above - Mackenzie River at Fort Simpson [10GC001] hydrometric gauge photo from May 6 at 11:00. Photo courtesy of Water Survey of Canada and GNWT.

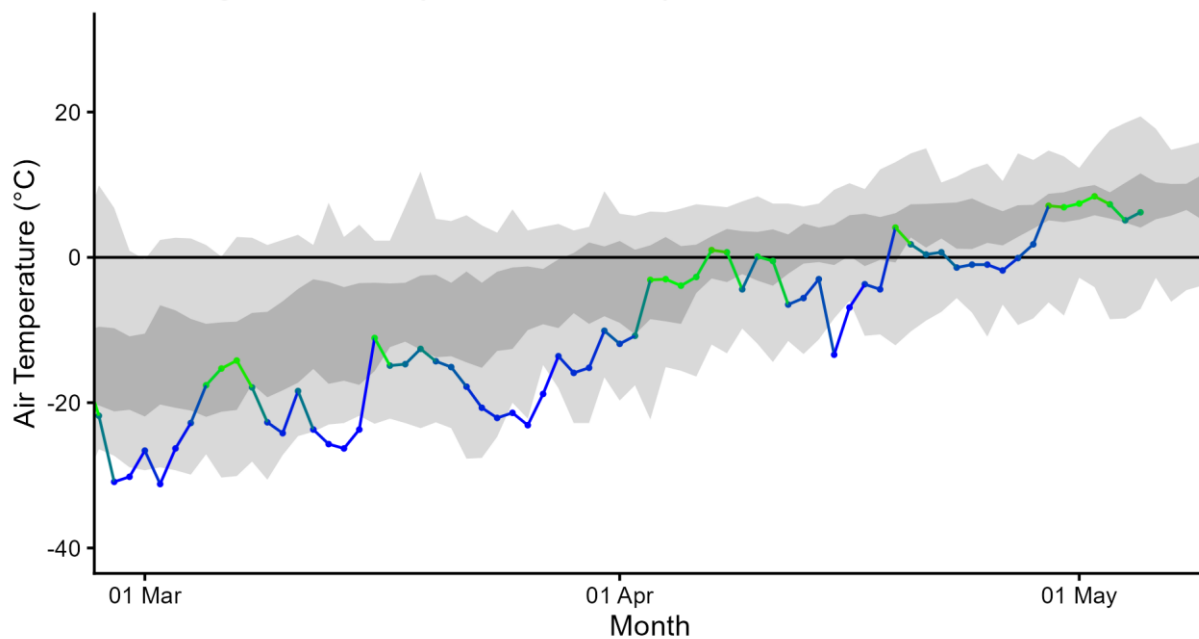
Weather Data:

Weather information informs how snow and ice will melt and provides information about how this spring is unfolding relative to previous springs. Warmer than normal conditions early in the spring allow for additional energy to melt the snowpack and soften river ice. Rain-on-snow events can cause rapid melt of snowpacks and facilitate quick delivery of snowmelt water to rivers. Locations included here cover basin areas that feed into NWT rivers that are currently undergoing break-up. The first set of figures show how temperatures have been relative to average (dark grey band) this spring, while the second set is Environment and Climate Change Canada (ECCC) weather forecast data for the next seven days.

- In the Hay River basin, temperatures over the last few days have been average.
- In the Liard River basin, temperatures over the last few days have been above average.
- In the Dehcho Region, temperatures over the last few days have been above average.

High Level Air Temperature

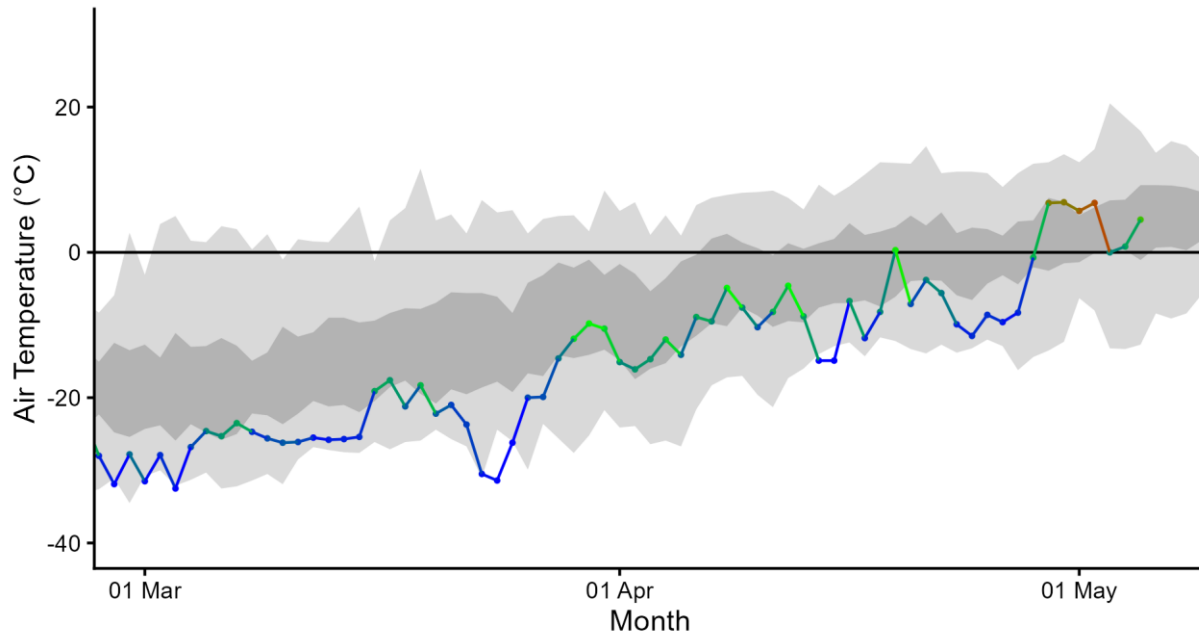
2026 High Level Daily Mean Air Temperatures



Above - Daily mean air temperature for High Level. Shaded areas represent the historical range (1991-2025).

Hay River Air Temperature

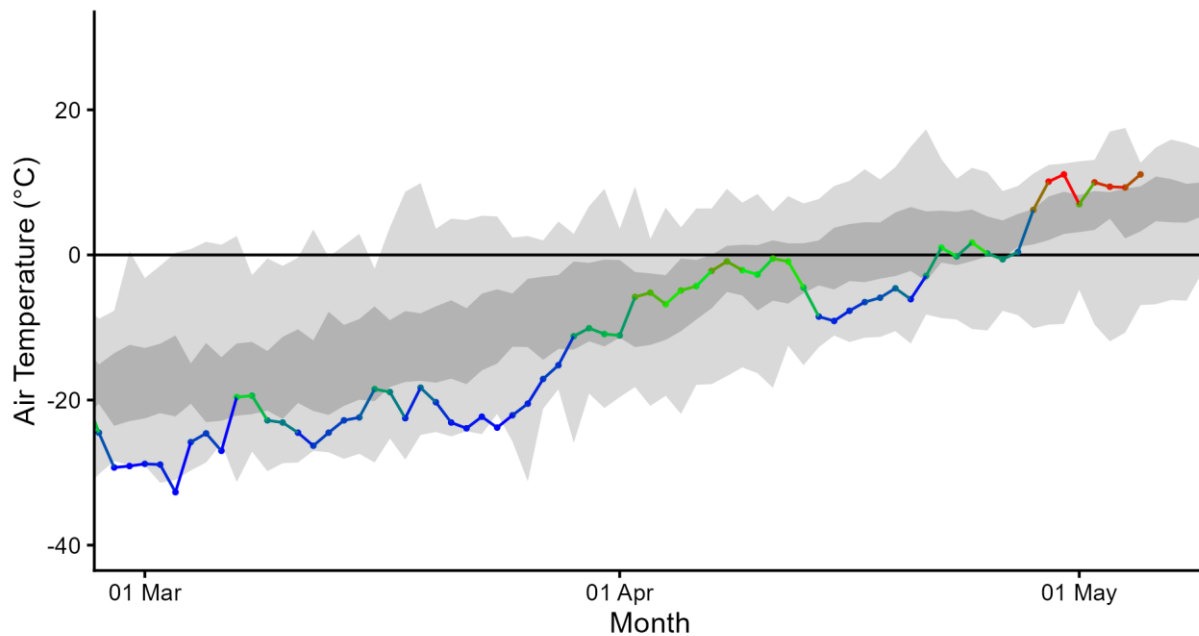
2026 Hay River Daily Mean Air Temperatures



Above - Daily mean air temperature for Hay River. Shaded areas represent the historical range (1991-2025).

Fort Simpson Air Temperature

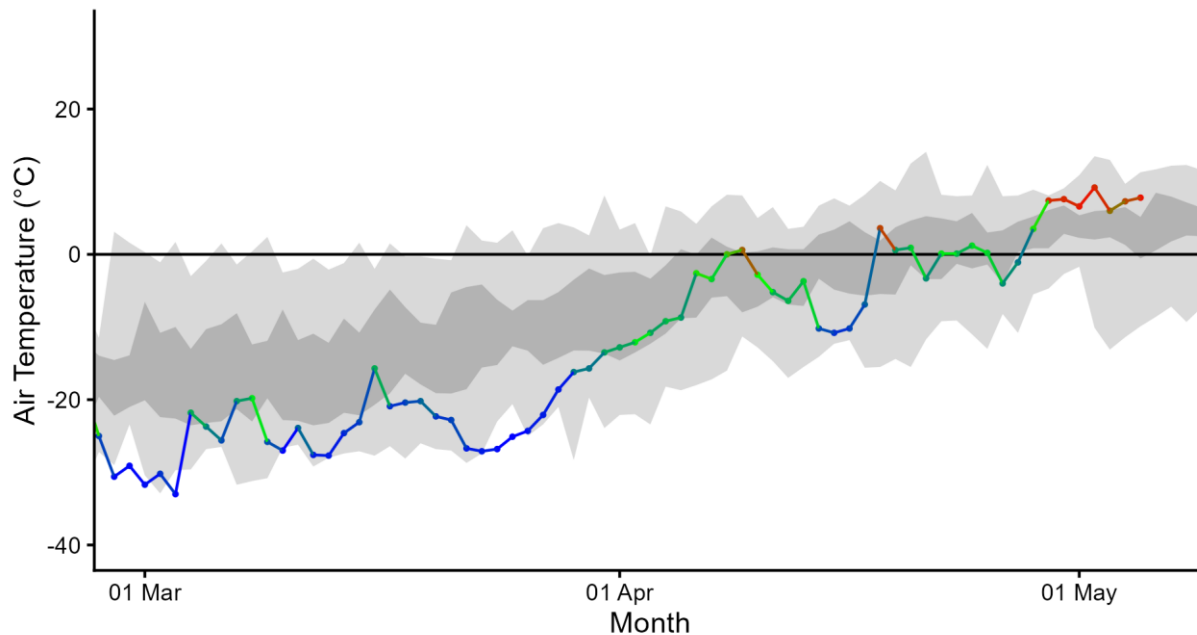
2026 Fort Simpson Daily Mean Air Temperatures



Above - Daily mean air temperature for Fort Simpson. Shaded areas represent the historical range (1991-2025).

Sambaa K'e Air Temperature

2026 Sambaa Ke Daily Mean Air Temperatures
















Above - Daily mean air temperature for Sambaa Ke. Shaded areas represent the historical range (1991-2025).














Weather Forecasts:

- In the Hay River Basin, forecasted temperatures for the week from May 6-12 are mostly average, with the potential to become slightly above average by the end of the forecast period. Patches of rain are expected within the basin on Thursday, with no significant impact on water levels anticipated.
- In the Liard River basin, forecasted temperatures for the week from May 6-12 indicate modest cooling, with temperatures becoming average to slightly above average by the end of the forecast period. There is no significant precipitation expected within the basin throughout the forecast period.
- In the Dehcho Region, forecasted temperatures over the week from May 6-12 remain above average throughout the forecast period. Rain is expected along the Mackenzie River from Fort Providence to Wrigley on Thursday, with moderate accumulated total precipitation (approximately 10-20 mm). Most of the precipitation is likely downstream of Fort Simpson, and there is no significant impact on water levels anticipated.














High Level seven-day weather forecast:

| ▼ Forecast | | | | | | | Hourly Forecast | Air Quality | Alerts | Jet Stream |
|---|---|---|---|---|---|---|---------------------------------|-----------------------------|------------------------|----------------------------|
| Wed 6 May | Thu 7 May | Fri 8 May | Sat 9 May | Sun 10 May | Mon 11 May | Tue 12 May | | | | |
|  17°C A mix of sun and cloud |  17°C Mainly sunny |  13°C A mix of sun and cloud |  14°C A mix of sun and cloud |  17°C Sunny |  20°C A mix of sun and cloud |  20°C A mix of sun and cloud | | | | |
| Tonight | Night | Night | Night | Night | Night | Night | | | | |
|  6°C A few clouds |  4°C Clear |  -1°C Clear |  3°C Cloudy |  4°C Cloudy periods |  3°C Cloudy periods | | | | | |














Hay River seven-day weather forecast:

| ▼ Forecast | | | | | | | Hourly Forecast | Air Quality | Alerts | Jet Stream |
|--|--|---|--|---|--|--|---------------------------------|-----------------------------|------------------------|----------------------------|
| Wed 6 May | Thu 7 May | Fri 8 May | Sat 9 May | Sun 10 May | Mon 11 May | Tue 12 May | | | | |
|  13°C Cloudy |  8°C 60% Chance of showers |  7°C Cloudy |  7°C Sunny |  13°C 30% Chance of showers |  16°C A mix of sun and cloud |  15°C A mix of sun and cloud | | | | |
| Tonight | Night | Night | Night | Night | Night | Night | | | | |
|  2°C 30% Chance of showers |  1°C Rain showers or flurries |  -5°C Cloudy periods |  2°C Cloudy |  5°C Cloudy periods |  5°C Cloudy periods | | | | | |

Fort Simpson seven-day weather forecast:

| ▼ Forecast | | | | | | | Hourly Forecast | Air Quality | Alerts | Jet Stream |
|---|--|--|---|---|---|---|---------------------------------|-----------------------------|------------------------|----------------------------|
| Wed 6 May | Thu 7 May | Fri 8 May | Sat 9 May | Sun 10 May | Mon 11 May | Tue 12 May | | | | |
|  18°C 30% Chance of showers |  10°C Rain |  15°C Sunny |  13°C Cloudy |  20°C Sunny |  19°C A mix of sun and cloud |  17°C A mix of sun and cloud | | | | |
| Tonight | Night | Night | Night | Night | Night | | | | | |
|  6°C 60% Chance of showers |  0°C Cloudy periods |  2°C Cloudy periods |  5°C Cloudy |  5°C Cloudy periods |  4°C Cloudy periods | | | | | |

Sambaa K'e seven-day weather forecast:

| ▼ Forecast | | | | | | | Hourly Forecast | Air Quality | Alerts | Jet Stream |
|--|---|---|--|---|---|---|---------------------------------|-----------------------------|------------------------|----------------------------|
| Wed 6 May | Thu 7 May | Fri 8 May | Sat 9 May | Sun 10 May | Mon 11 May | Tue 12 May | | | | |
|  20°C Clearing |  17°C 30% Chance of showers |  16°C A mix of sun and cloud |  18°C Cloudy |  21°C Sunny |  17°C A mix of sun and cloud |  16°C A mix of sun and cloud | | | | |
| Tonight | Night | Night | Night | Night | Night | | | | | |
|  6°C 30% Chance of showers |  3°C Clear |  5°C Cloudy |  4°C Cloudy periods |  4°C Cloudy periods |  3°C Cloudy periods | | | | | |

Factors to Watch:

It is important to note that much of the water contributing to NWT rivers originates from outside of the NWT, which is why we also rely on information from the Yukon, British Columbia, Alberta and Saskatchewan.

The potential and severity of flooding will depend in large part on the weather over the upcoming weeks and how this interacts with existing ice conditions, water levels and snowpack amounts.

The primary factors that influence water levels in the spring are:

- Ice jams (can result in out-of-bank flows, even if there are below normal flows)
- Rate of melt of ice and snow:
 - Gradual vs quick melt
 - Rain on snow or ice events (rain brings a lot of energy to help melt happen more quickly)
- Current water levels
- How wet the ground was in the fall
- Snowpack

Spring Break up on NWT Rivers: Mechanical vs Thermal

In any given year, spring flooding can occur in a number of NWT communities, including Hay River, Jean Marie River, Fort Simpson, Fort Liard, Tulita, Fort Good Hope, Fort McPherson and Aklavik. Spring flooding is caused by ice jam-induced flooding and can occur irrespective of existing water levels. However, if existing water levels are high, the impact of an ice jam flood can be much worse.

Ice jams typically occur on north-flowing rivers where warm weather and snowmelt cause ice to break up on the southern reaches of a river. As this ice flows north (downstream), it meets a more solid ice cover, hits the ground, or gets stuck in a river bend. When this happens, the pieces of floating ice jam can form a dam, which causes water levels to rise rapidly. This is called a **mechanical break-up**, whereby the ice downstream is broken up by the force of ice moving into it.

If there is warm and sunny weather throughout early spring, the ice may thermally erode and weaken. This provides less of a resisting force for ice and water moving down the river and will have less of a chance of causing water levels to rise behind an ice jam. This is called a **thermal break-up**.

The causes of mechanical and thermal break-ups are usually dependent on the weather during early spring. Warm weather, sunshine, and rain on snow events are usually a good way to bring extra energy into the system to help melt the ice. Warm temperatures in the upstream part of a basin could also cause a rapid snowmelt and move water to the river very quickly. This could lead to ice-jam conditions downstream if the ice has not yet received

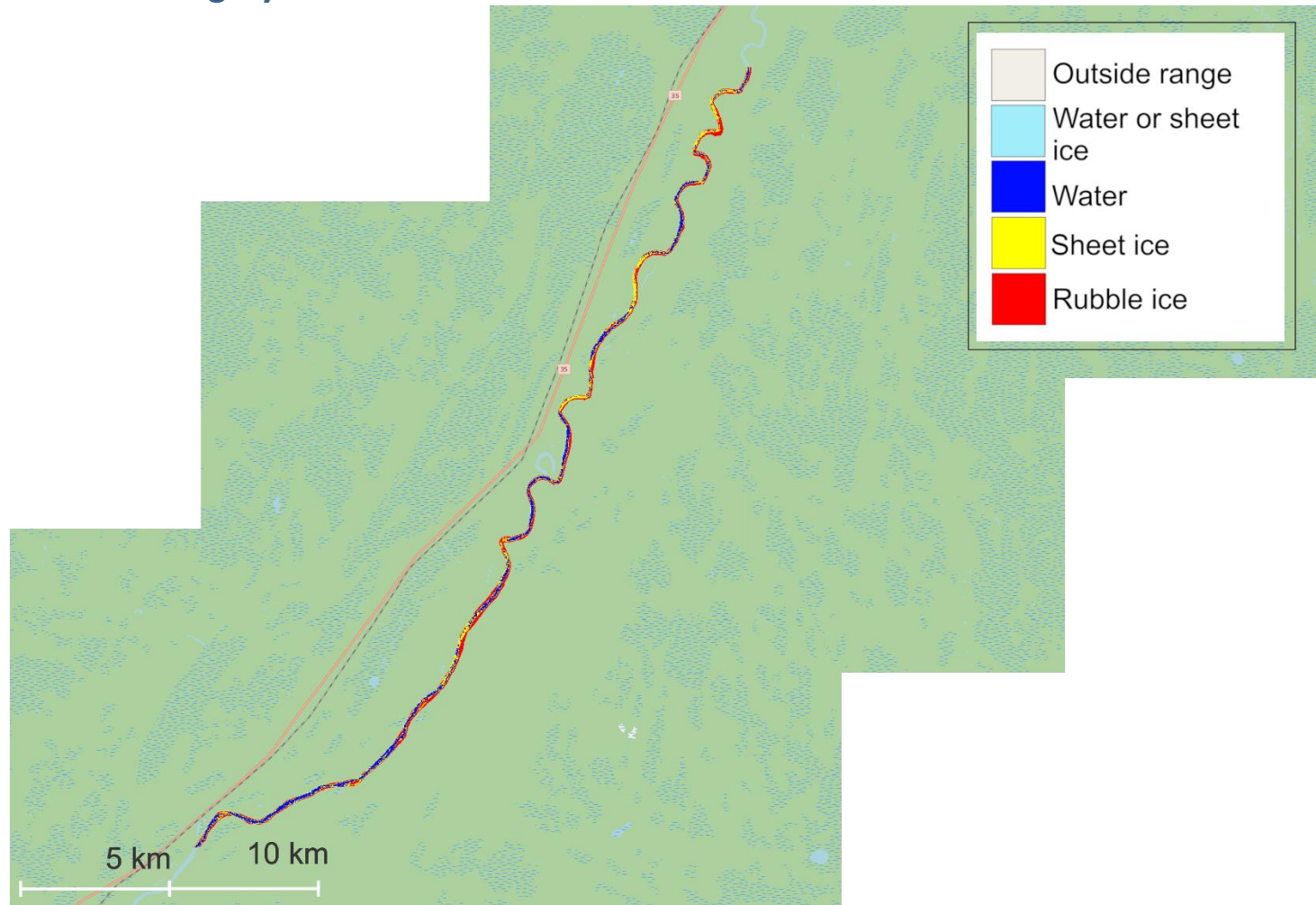
enough energy to degrade. Another important factor is the thickness of the ice. Thicker ice takes longer to melt and can increase the chances of ice jams. If an ice jam occurs, the location of the ice jam is also very important. Each river reach has different locations that are prone to ice jams. The location of the ice jam can be an important factor as to whether or not a community floods. Furthermore, ice will jam and then move again at multiple locations along a river as break-up progresses downstream. The timing and location of each jam can also influence if a community will flood.

Technical Note:

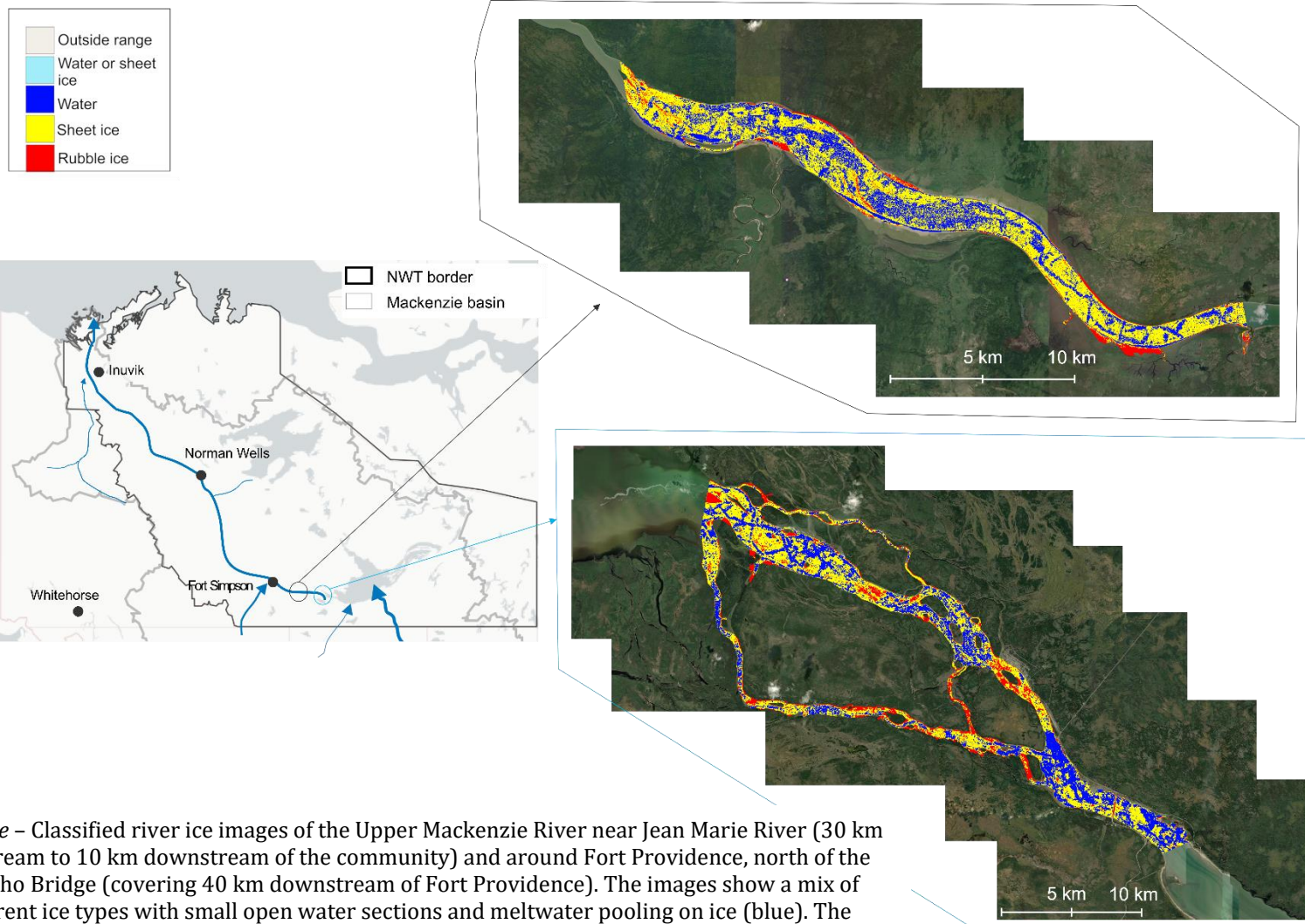
- The figures in this report plot water levels. The values on the y-axis are (in most cases) relative to an arbitrary datum. This means that the values on each gauge can be compared to different years but should not be used to compare water levels from one location to the next.

For example, the Hay River near the border gauge (07OB008) records a level of about 288 m. The Hay River near Hay River gauge (07OB001) usually records a level of about 4 m. This **does not mean** that the water level at the Hay River at the border site is 284 m higher than the water level at the Hay River near Hay River site.

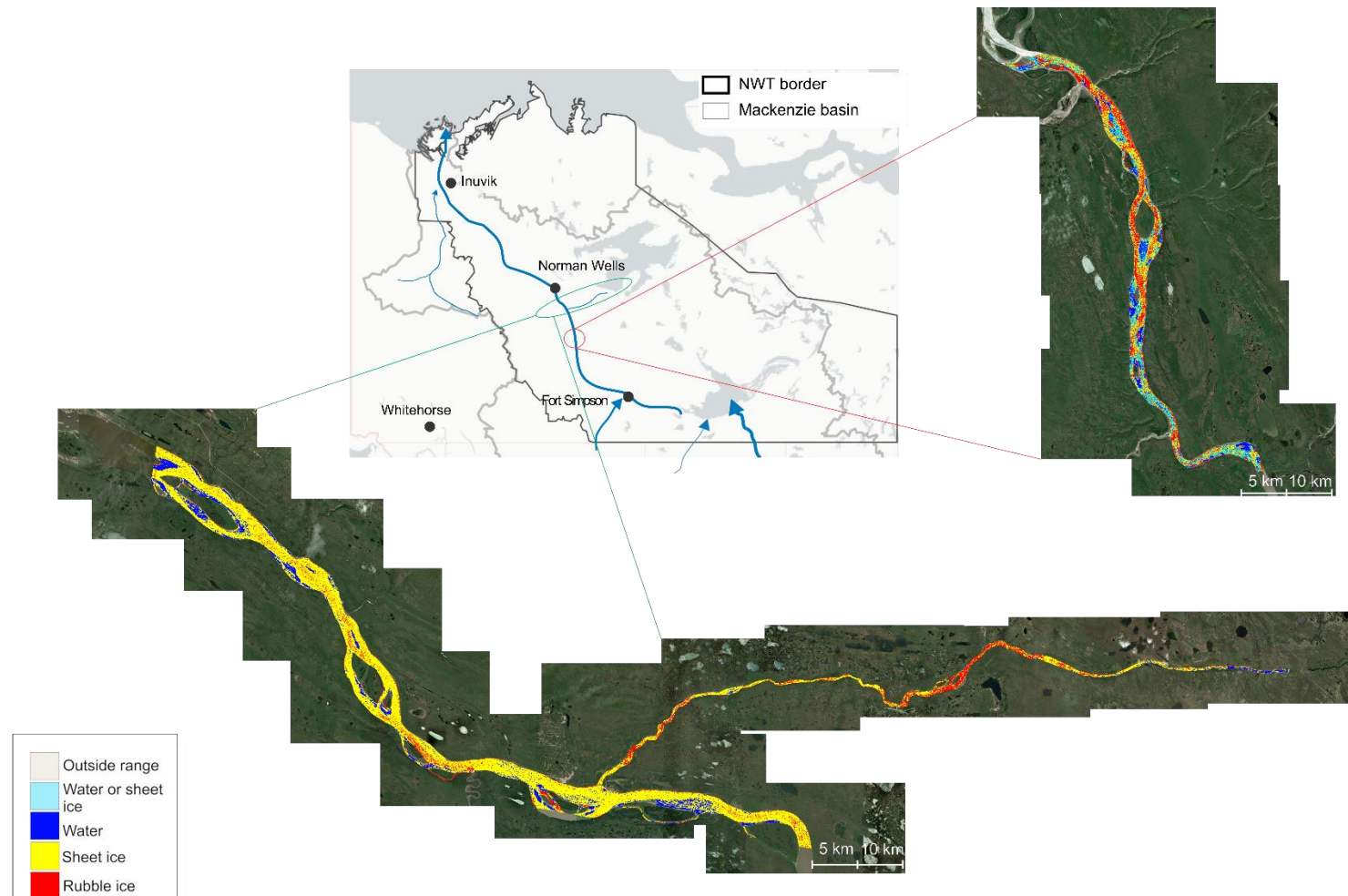
Appendix A: River Ice Imagery



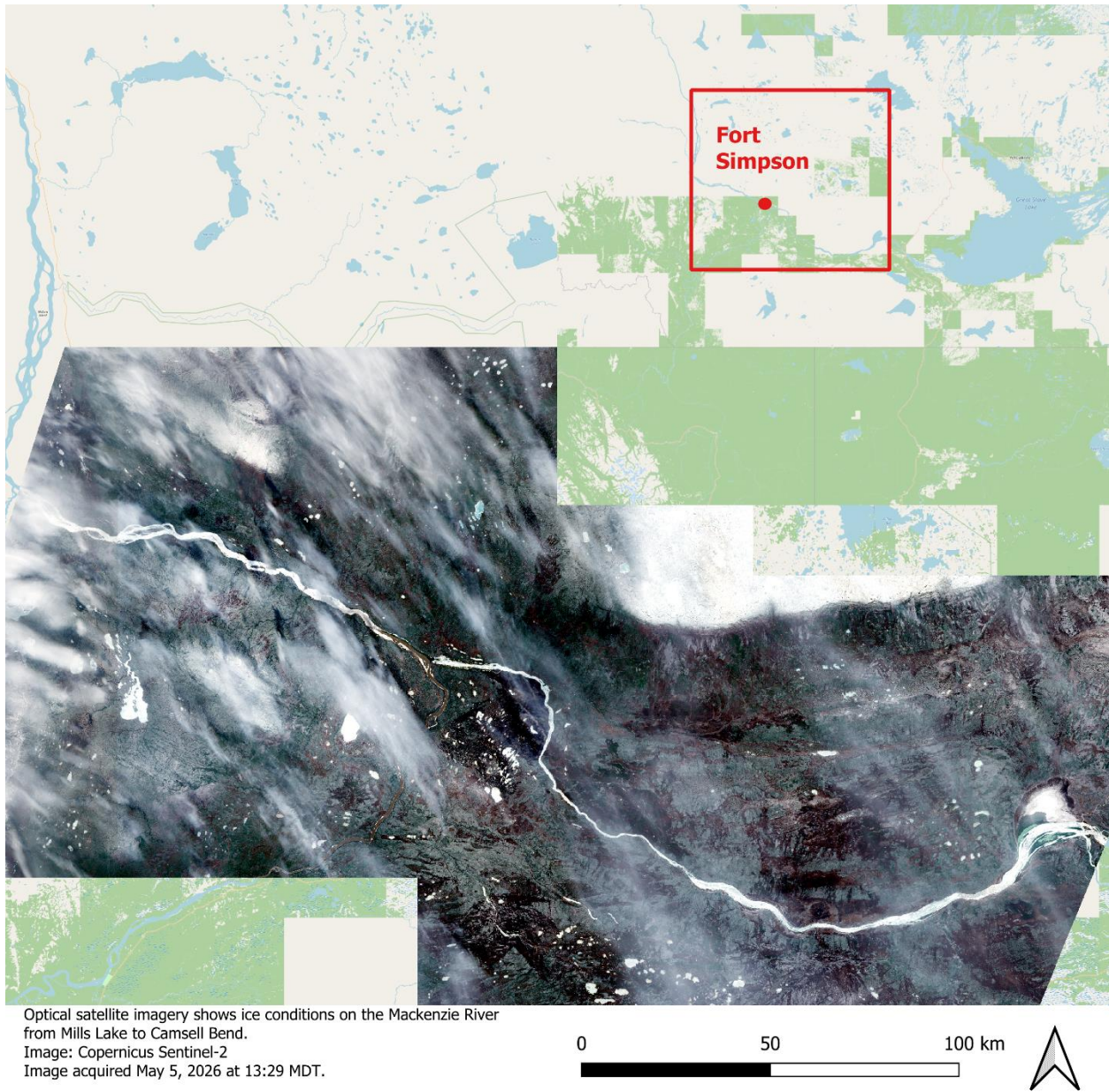
Above – Classified river ice images of the Hay River near Meander River, AB (20 km downstream of the Meander River confluence, for a stretch of 38 km). The image was acquired via RCM satellite passes on May 5, 2026, at ~19:37 MDT. The image shows predominantly open water sections with small sections where ice is still in place but very thin (shown as intact ice in yellow). The images are courtesy of the federal government’s Government Operations Centre. The river ice classification was completed using the IceBC algorithm.



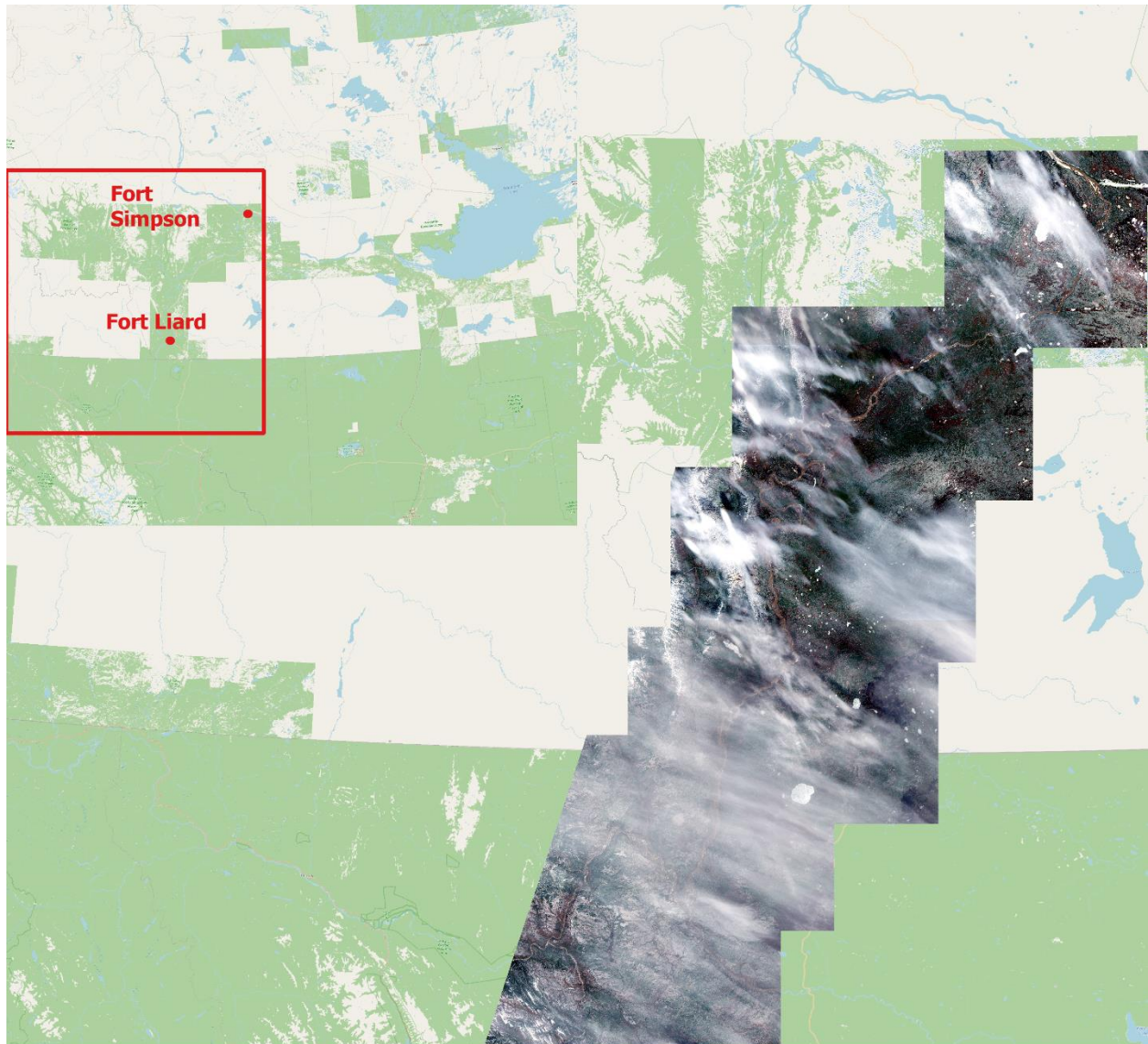
Above – Classified river ice images of the Upper Mackenzie River near Jean Marie River (30 km upstream to 10 km downstream of the community) and around Fort Providence, north of the Dehcho Bridge (covering 40 km downstream of Fort Providence). The images show a mix of different ice types with small open water sections and meltwater pooling on ice (blue). The images were acquired via RCM satellite passes on May 5, 2026, at ~19:37 MDT (Jean Marie River) and May 6, 2026, at 08:12 MDT (Fort Providence). The images are courtesy of the federal government’s Government Operations Centre. The river ice classification was completed using the IceBC algorithm.



Above – Classified river ice images of the Mackenzie River near Tulita (covering 30 km upstream to 60 km downstream on the Mackenzie and 80 km along the Great Bear River) and a section of the Mackenzie River 80 km north of Wrigley (a 50 km span). The images show predominantly intact ice (yellow) on the Mackenzie River near Tulita, and melted snow on ice with sections of rubble ice (red) north of Wrigley. Additionally, sections of intact ice and two main sections of rubble ice (red) are visible on the Great Bear River. The images were acquired via RCM satellite passes on May 5, 2026, at 19:38 MDT (near Tulita) and May 6, 2026, at 08:44 MDT (north of Wrigley). The images are courtesy of the federal government’s Government Operations Centre. The river ice classification was completed using the IceBC algorithm.



Above – Optical satellite imagery captured by Sentinel-2 shows ice conditions on the Mackenzie River from Mills Lake to Camsell Bend. River ice from the Liard River has passed Fort Simpson. Intact ice cover remains on the Mackenzie River upstream of Fort Simpson, with increasing thaw evident at Mills Lake. A small ice jam (~20 km in length) is sitting approximately 10 km downstream of Fort Simpson. Image acquired on May 5, 2026 at 13:29 MDT.



Optical satellite imagery of the Liard River from Toad River to the Mackenzie River confluence.
 Image: copernicus Sentinel-2
 Image acquired May 5, 2026 at 13:29 MDT.

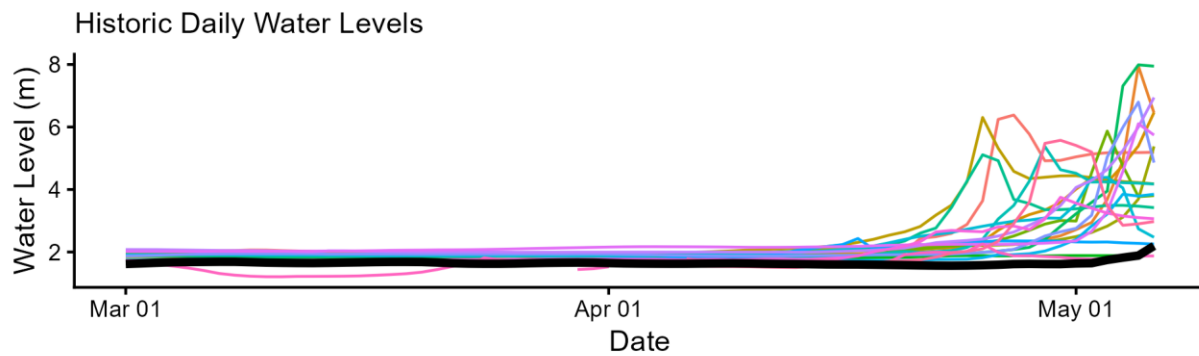
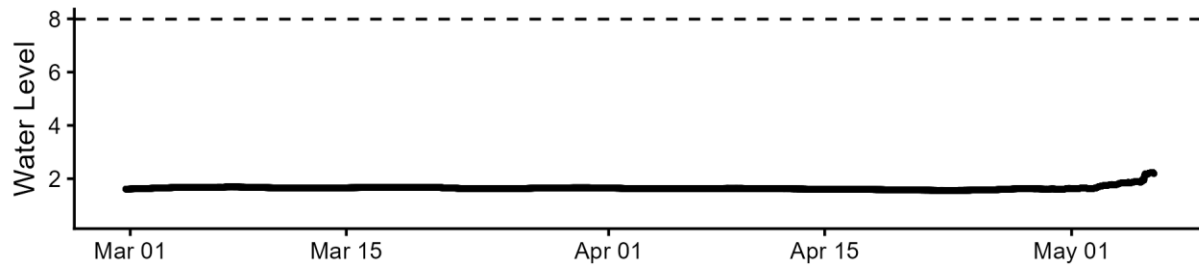
Above – Optical satellite imagery captured by Sentinel-2 shows predominantly ice-free conditions on the Liard River from Toad River, B.C. to the Mackenzie River confluence at Fort Simpson. Image acquired on May 5, 2026 at 13:29 MDT.

Appendix B: High resolution and historic water level plots

Hay River Near Hay River (070B001)

HAY RIVER NEAR HAY RIVER (070B001)

2026 Water Levels (5 minute resolution)

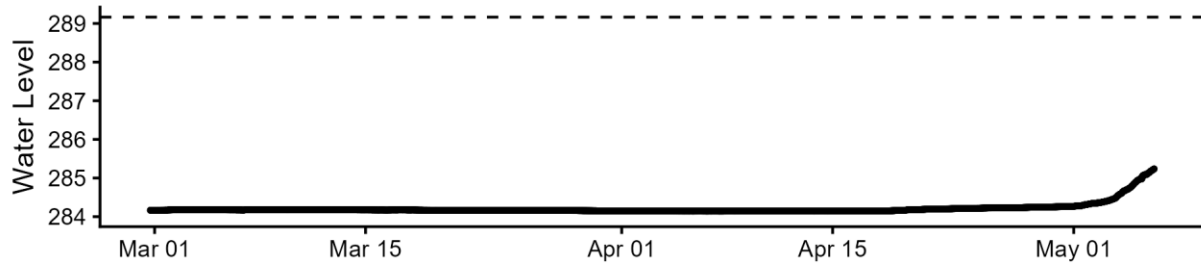


Above - The upper graph in the figure presents real time water level data at 5-minute resolution. The lower graph shows daily average levels relative to the previous 20 years.

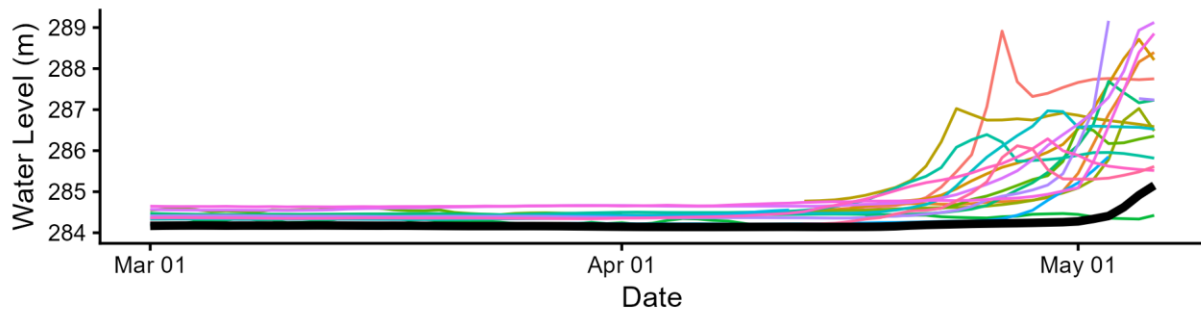
Hay River Near Alta/Nwt Boundary (07OB008)

HAY RIVER NEAR ALTA/NWT BOUNDARY (07OB008)

2026 Water Levels (5 minute resolution)



Historic Daily Water Levels

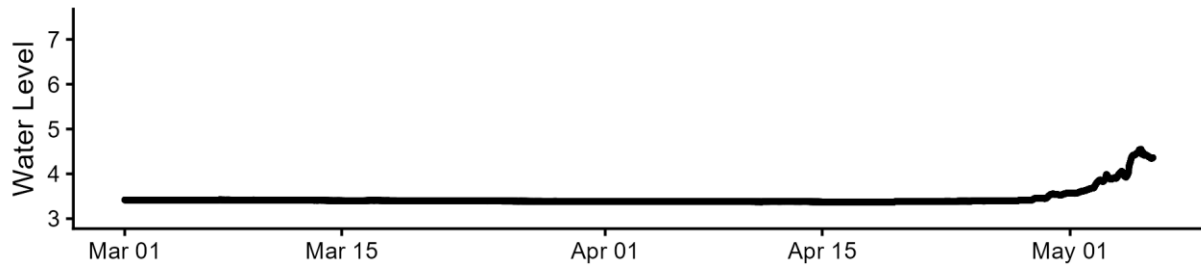


Above - The upper graph in the figure presents real time water level data at 5-minute resolution. The lower graph shows daily average levels relative to the previous 20 years.

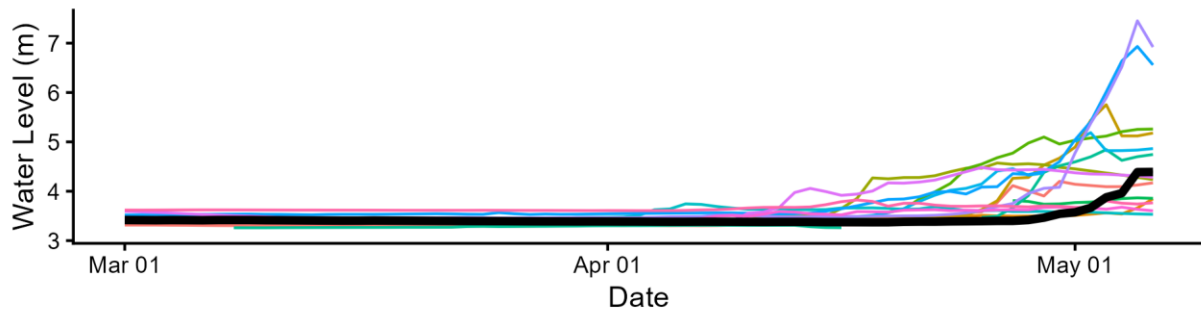
Steen River Near Steen River (070B004)

STEEN RIVER NEAR STEEN RIVER (070B004)

2026 Water Levels (5 minute resolution)



Historic Daily Water Levels

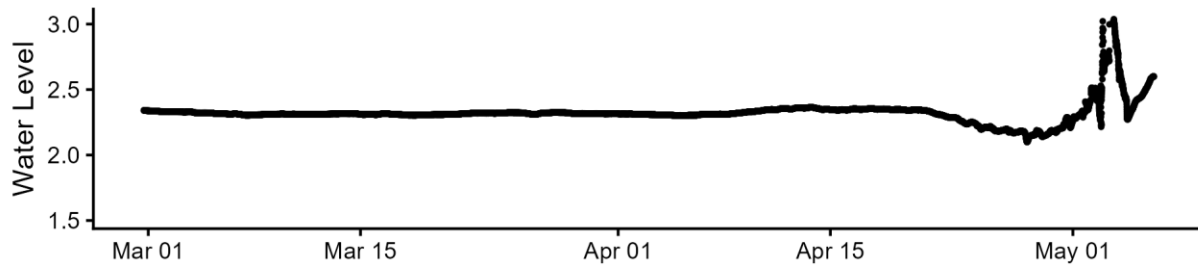


Above - The upper graph in the figure presents real time water level data at 5-minute resolution. The lower graph shows daily average levels relative to the previous 20 years.

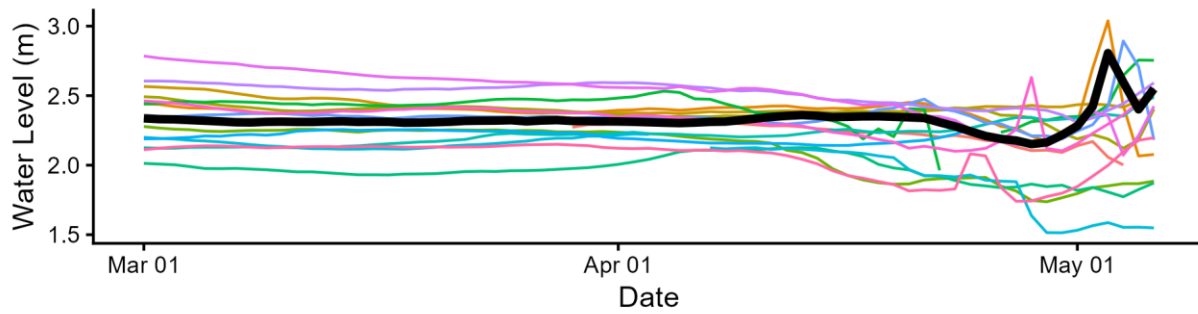
Liard River At Upper Crossing (10AA001)

LIARD RIVER AT UPPER CROSSING (10AA001)

2026 Water Levels (5 minute resolution)



Historic Daily Water Levels

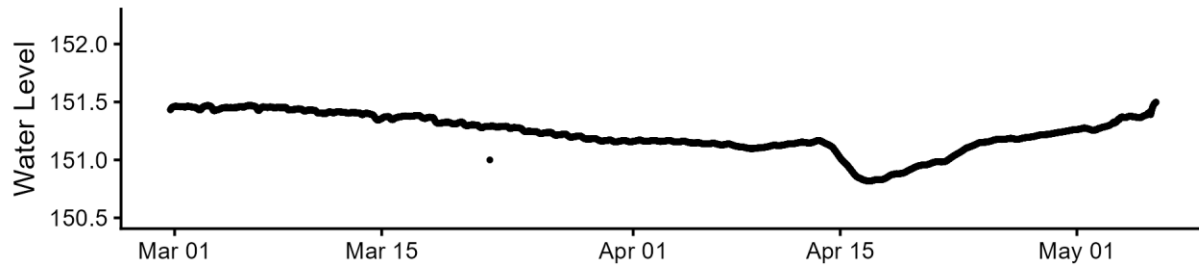


Above - The upper graph in the figure presents real time water level data at 5-minute resolution. The lower graph shows daily average levels relative to the previous 20 years.

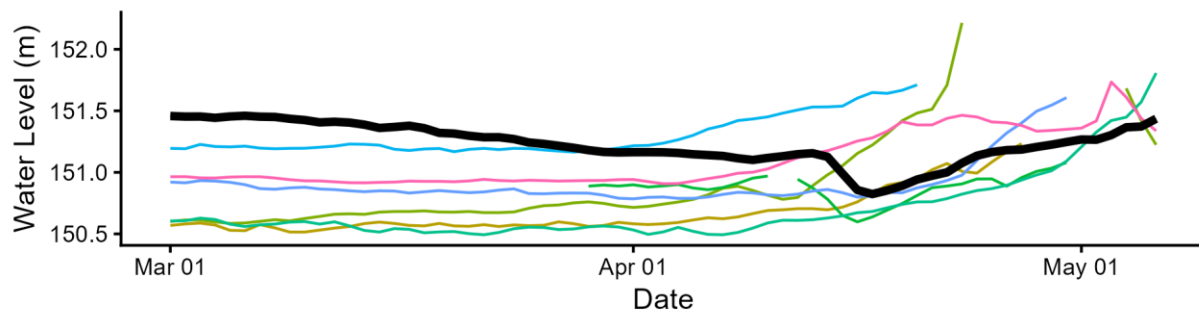
Mackenzie River Near Fort Providence (10FB001)

MACKENZIE RIVER NEAR FORT PROVIDENCE (10FB001)

2026 Water Levels (5 minute resolution)



Historic Daily Water Levels

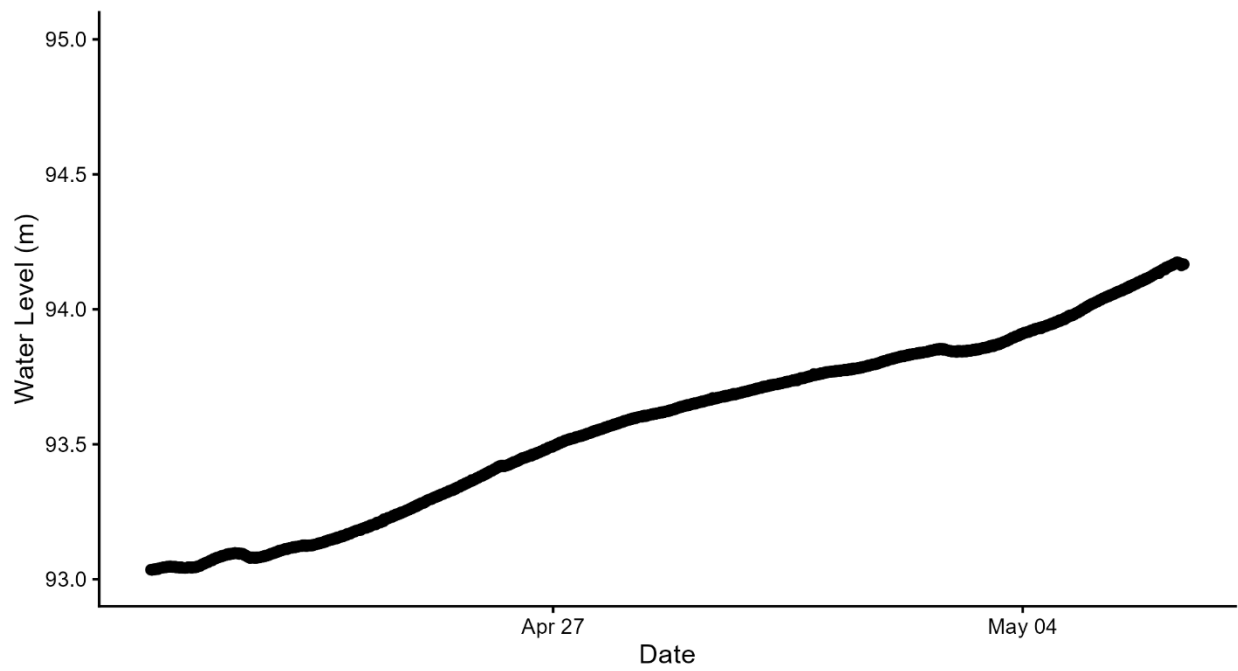


Above - The upper graph in the figure presents real time water level data at 5-minute resolution. The lower graph shows daily average levels relative to the previous 20 years.

Mackenzie River At Jean Marie River (10FB007)

MACKENZIE RIVER AT JEAN MARIE RIVER (10FB007)

High Resolution Water Level Data



Above – This graph presents real time water level data at 5-minute resolution.