

Import Restrictions

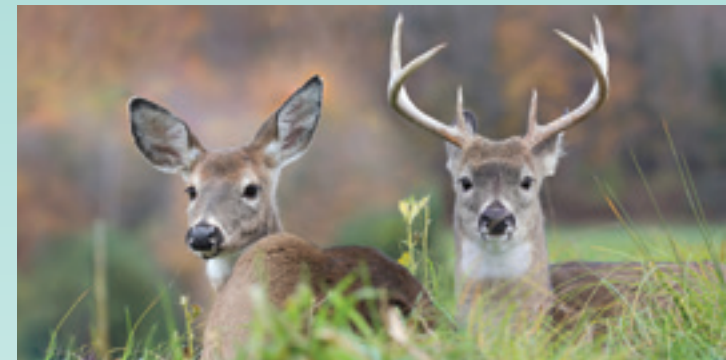
for mule and white-tailed deer

You can help prevent
chronic wasting disease

- **Take part in ECC sampling programs to monitor for chronic wasting disease**
Contact your nearest ECC office to drop off intact heads from deer harvested in the NWT.
- **Test deer species harvested in Alberta or Saskatchewan**
Hunters who harvest mule or white-tailed deer more than 100 km outside the NWT border must have the animal tested for chronic wasting disease.
Contact the provincial wildlife agency for information on where to drop off the head and how to get test results.
- **Notify ECC if you see a sick deer, moose, elk or caribou**
Contact your local or regional ECC office or email: WildlifeObs@gov.nt.ca.

For more information:

Contact your nearest ECC office or e-mail
wildlife@gov.nt.ca



**New regulations to protect wildlife
in the Northwest Territories**



Preventing chronic wasting disease

Chronic wasting disease (CWD) is a progressive and ultimately fatal disease of the brain that can affect deer species such as moose, elk and caribou.

In Canada, CWD has been detected in farmed and wild deer, moose and elk populations in southern Alberta and Saskatchewan.

This disease has not been detected in any wildlife species in the Northwest Territories (NWT).

New restrictions on importing mule and white-tailed deer into the NWT will help prevent the introduction of chronic wasting disease into our wildlife populations.

How will these new regulations affect me?

Hunters who harvest mule or white-tailed deer outside the NWT border **must have the animal tested for chronic wasting disease and provide proof the animal does not have the disease before bringing it into the NWT.**

Only boneless meat does not require testing.

Failure to comply with these regulations may result in penalties under the *Wildlife Act*, including fines of up to \$50,000 and/or jail time.

Taking action

Environment and Climate Change (ECC) is working closely with hunters and neighbouring jurisdictions to prevent the introduction of chronic wasting disease into the NWT and ensure northerners can continue to harvest and enjoy healthy traditional foods.

These measures include:

- Working with hunters to **test samples** from NWT deer, moose and caribou
- Monitoring **wildlife health in the NWT** with communities, co-management partners and other agencies
- Providing information on the **signs and symptoms** of chronic wasting disease

