

# North Slave Region Moose Surveys

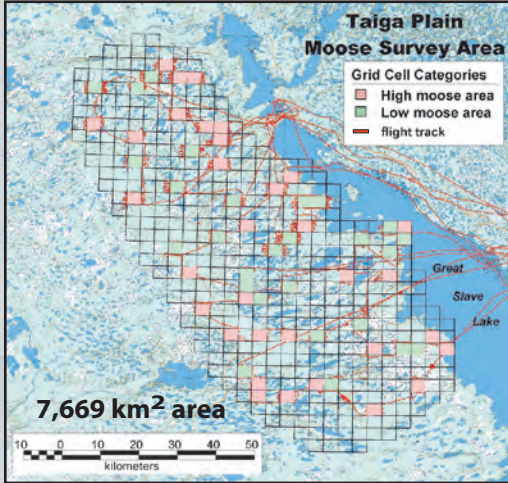
An aerial survey for moose was conducted in March 2004 to collect baseline estimates of moose density in the Taiga Plain and Taiga Shield ecozones of the North Slave Region, Northwest Territories.



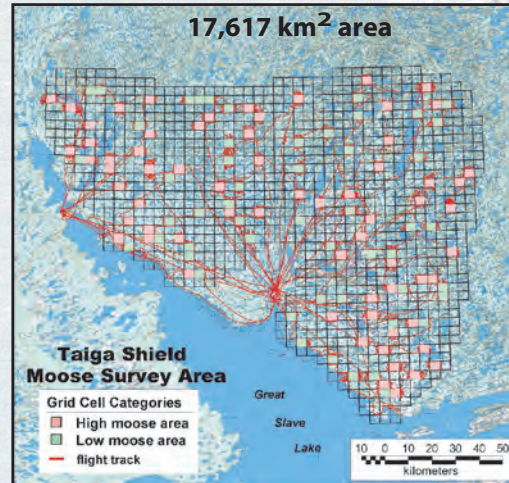
North Slave Region boundary showing ecozones

Our technique subdivided the survey area into sample units of about 16 km<sup>2</sup> (2' latitude x 5' longitude). The sampling units were divided into expected high and low density of moose. This stratification was based on habitat characteristics from previous sightings of moose and input from hunters, wildlife officers, and biologists.

Randomly selected units of both high and low strata were flown at 100% coverage with the goal of counting every moose within a survey sample unit.



In the 60 Taiga Plain grid cells surveyed we saw 30 moose classified as 11 bulls, 14 cows, 2 calves, and 3 uncertain. We saw an additional 19 moose from incidental sightings outside of these grid cells. Therefore, we counted 49 moose in total and classified them as 18 bulls, 24 cows, 4 calves, and 3 uncertain.

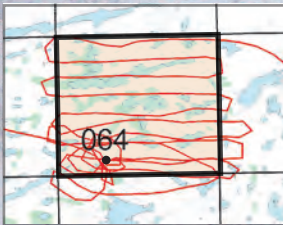


In the 120 Taiga Shield grid cells surveyed we saw 33 moose classified as 8 bulls, 16 cows, and 9 calves. We saw an additional 35 moose from incidental sightings outside of these grid cells. Therefore, we counted 68 moose in total and classified them as 21 bulls, 29 cows, and 18 calves.

## SURVEY RESULTS

(including all sightings)

### Grid Cell Flight Path



We used two Cessna 185 airplanes and local observers to count and classify moose as bull (small or large), cow, or calf. A GPS waypoint was taken when moose were sighted.

### Moose Survey Area Estimates

Taiga Plain	Taiga Shield
<b>306 moose</b>	<b>484 moose</b>
<b>3.99 moose/100 km<sup>2</sup></b>	<b>2.75 moose/100 km<sup>2</sup></b>

### Bull:Cow ratios

Taiga Plain	Taiga Shield
<b>80:100</b>	<b>71:100</b>

### Calf:Cow ratios

Taiga Plain	Taiga Shield
<b>16:100</b>	<b>64:100</b>

Participants for these surveys were from the Yellowknives Dene First Nation, Lutsel K'e Dene First Nation, North Slave Metis Alliance, Tli Cho Treaty 11, RWED staff, and residents of Yellowknife.



Previous population estimates of moose in the North Slave Region have been lacking. We now have established baseline information on moose density within the region prior to the onset of significant development and ecological pressures.

For more information, contact:

Dean Cluff, Regional Biologist  
Resources, Wildlife & Economic Development  
North Slave Region,  
Government of the Northwest Territories  
Yellowknife, NT X1A 2P9

tel: (867) 873-7783 email: dean\_cluff@gov.nt.ca



Northwest Territories Resources, Wildlife and Economic Development

*Acknowledgements:* Tracy Hillis (RWED) provided invaluable support with the habitat analysis and stratification. Jay ver Hoef (Alaska Dep. Fish & Game) assisted with the population analysis and Dave Taylor (RWED) assisted with implementing the survey grid in the GIS. We thank the following for their efforts in observing moose: Alfred Baillargeon, Henry Bend, Raymond Bourget, Magnus Bourque, Frank Cansell, Narcisse Chocolate, Kevin Forrest, Jon Glover, Tracy Hillis, Hiroyuki Izumi, Margaret LeMoel, Anatasia Mackenzie, Morris Martin, George Martin, Joslyn Oosenbrug, Eddie Paul, Narcisse Rabesza, Charlie Sangris, Dave Taylor, Bill Turner, Bob Turner, Leon Weyallon, Janice Ziemann. Funding provided by the West Kitikmeot/Slave Study Society and the Cumulative Impact Monitoring Program.